

# INSTALACIÓN COMERCIAL

COMMERCIAL FURNISHINGS

PH 226

S30 227

S20 235

DJOLCE & GABBANA

# PH100

## ADINOR

6m. Condiciones especiales de envío  
6m. Special shipping conditions

### PERFIL BÁSICO PANELADO HORIZONTAL

HORIZONTAL PROFILE



REF.  
PH100.A.C

Longitud / Length : **6,05 m.**

### FRESA PERFIL BÁSICO

HORIZONTAL PROFILE DRILL



REF.  
PH110

### GANCHO LAMA 10-20-30cm.

10-20-30cm. HANGER



REF.	ACABADOS / FINISHINGS
PH213CR 20cm.	Cromo / Nickel Plated
PH214CR 30cm.	Cromo / Nickel Plated

REF.	ACABADOS / FINISHINGS
PH212N 10cm.	Negro / Black
PH213N 20cm.	Negro / Black
PH214N 30cm.	Negro / Black

### COLGADOR INCLINADO 40cm.

40cm. HANGER 30°



REF.	ACABADOS / FINISHINGS
PH231CR	Cromo / Nickel Plated
PH231N	Negro / Black

### GANCHO LAMA CON PORTAPRECIO 10-20-30cm.

10-20-30cm. HANGER WITH PRICE TAG



REF.	ACABADOS / FINISHINGS
PH253CR 20cm.	Cromo / Nickel Plated
PH254CR 30cm.	Cromo / Nickel Plated

REF.	ACABADOS / FINISHINGS
PH253N 20cm.	Negro / Black
PH254N 30cm.	Negro / Black

### COLGADOR FLAUTA 40cm.

40cm. HANGER



REF.	ACABADOS / FINISHINGS
PH230CR	Cromo / Nickel Plated

### SOPORTE CARTELA 30cm. DER. + IZO.

30cm. PANEL CLAMP



REF.	ACABADOS / FINISHINGS
PH220CR	Cromo / Nickel Plated

### SOPORTE ESTANTE 30cm. DER. + IZO.

30cm. PANEL CLAMP



REF.	ACABADOS / FINISHINGS
PH222CR	Cromo / Nickel Plated
PH222N	Negro / Black

### ZAPATILLERO METÁLICO

SHOE HANGER



REF.	ACABADOS / FINISHINGS
PH223N	Negro / Black

### SOPORTE BALONES

BALL HOLDER



REF.	ACABADOS / FINISHINGS
PH211CR	Cromo / Nickel Plated

### SOPORTE CASCO

HELMET HANGER



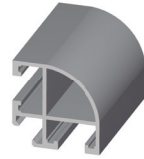
REF.	ACABADOS / FINISHINGS
PH243CR	Cromo / Nickel Plated

# S30

**ADINOR**

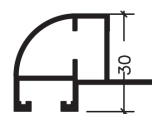
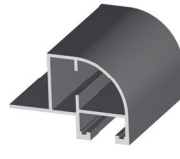
## MC-30

PERFIL MC-30  
MC-30 PROFILE



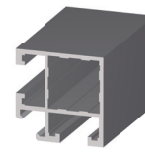
## MC-30 ALA

PERFIL MC-30 ALA  
MC-30 FLANGE PROFILE



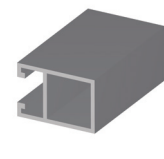
## E-30

PERFIL E-30  
E-30 PROFILE



## R-1

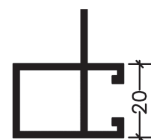
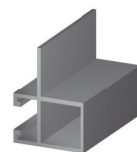
PERFIL R-1  
R-1 PROFILE



ACABADOS	FINISHINGS	Longitud / Lenght : 6 m.	Longitud / Lenght : 6 m.	Longitud / Lenght : 6 m.	Longitud / Lenght : 6 m.
<b>LACADOS</b>	<b>COATED</b>	REF.	REF.	REF.	REF.
Blanco	White	251.L.B	251A.L.B	255.L.B	211.L.B
<b>ANODIZADOS</b>	<b>ANODIZED</b>	REF.	REF.	REF.	REF.
Plata Brillo	Polished Silver	251.A.P	251A.A.P	255.A.P	211.A.P
Plata Mate	Natural Anodized	251.A.PM	251A.A.PM	255.A.PM	211.A.PM
<b>SIN ANODIZAR</b>	<b>NO ANODIZED</b>	REF.	REF.	REF.	REF.
Crudo	Raw	251.A.C	251A.A.C	255.A.C	211.A.C

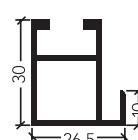
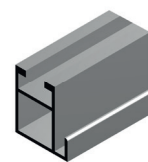
## R-1 ALA

PERFIL R-1 ALA  
R-1 FLANGE PROFILE



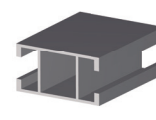
## R-1 P

PERFIL R-1 P  
R-1P PROFILE



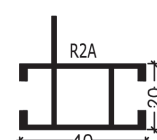
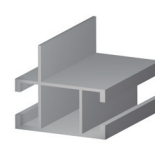
## R-2

PERFIL R-2  
R-2 PROFILE



## R-2 ALA

PERFIL R-2 ALA  
R-2 FLANGE PROFILE

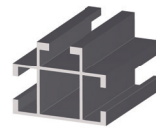


ACABADOS	FINISHINGS	Longitud / Lenght : 6 m.	Longitud / Lenght : 6 m.	Longitud / Lenght : 6 m.	Longitud / Lenght : 6 m.
<b>LACADOS</b>	<b>COATED</b>	REF.	REF.	REF.	REF.
Blanco	White	211A.L.B	211PL.B	222.L.B	222A.L.B
<b>ANODIZADOS</b>	<b>ANODIZED</b>	REF.	REF.	REF.	REF.
Plata Brillo	Polished Silver	211A.A.P	211PA.P	222.A.P	222A.A.P
Plata Mate	Natural Anodized	211A.A.PM	211PA.PM	222.A.PM	222A.A.PM
<b>SIN ANODIZAR</b>	<b>NO ANODIZED</b>	REF.	REF.	REF.	REF.
Crudo	Raw	211A.A.C	211PA.C	222.A.C	222A.A.C

# S30

**ADINOR**

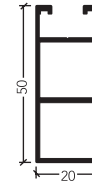
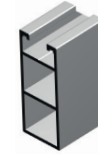
**R-3**  
PERFIL R-3  
R-3 PROFILE



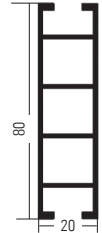
**R-3 P**  
PERFIL R-3 P  
R-3 P PROFILE



**Z-50**  
PERFIL Z-50  
Z-50 PROFILE



**Z-80**  
PERFIL Z-80  
Z-80 PROFILE



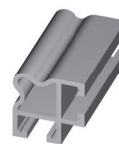
6m. Condiciones especiales de envío  
6m. Special shipping conditions

ACABADOS	FINISHINGS	Longitud / Length : 6 m.	Longitud / Length : 6 m.	Longitud / Length : 6 m.	Longitud / Length : 6 m.
<b>LACADOS</b>	<b>COATED</b>	REF.	REF.	REF.	REF.
Blanco	White	233.L.B	235.L.B	-	228.L.B
<b>ANODIZADOS</b>	<b>ANODIZED</b>	REF.	REF.	REF.	REF.
Plata Brillo	Polished Silver	233.A.P	235.A.P	-	228.A.P
Plata Mate	Natural Anodized	233.A.PM	235.A.PM	-	228.A.PM
<b>SIN ANODIZAR</b>	<b>NO ANODIZED</b>	REF.	REF.	REF.	REF.
Crudo	Raw	233.A.C	235.A.C	2285.A.C	228.A.C

**OC-8**  
PERFIL OC-8  
OC-8 PROFILE



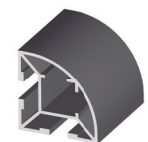
**MCO-30**  
PERFIL MCO-30  
MCO-30 PROFILE



**R-4**  
PERFIL R-4  
R-4 PROFILE

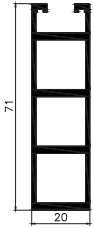


**MC-40**  
PERFIL MC-40  
MC-40 PROFILE

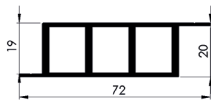
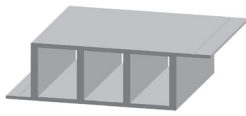


ACABADOS	FINISHINGS	Longitud / Length : 6 m.	Longitud / Length : 6 m.	Longitud / Length : 6 m.	Longitud / Length : 6 m.
<b>LACADOS</b>	<b>COATED</b>	REF.	REF.	REF.	REF.
Blanco	White	288.L.B	252.L.B	244.L.B	261.L.B
<b>ANODIZADOS</b>	<b>ANODIZED</b>	REF.	REF.	REF.	REF.
Plata Brillo	Polished Silver	288.A.P	252.A.P	244.A.P	261.A.P
Plata Mate	Natural Anodized	288.A.PM	252.A.PM	244.A.PM	261.A.PM
<b>SIN ANODIZAR</b>	<b>NO ANODIZED</b>	REF.	REF.	REF.	REF.
Crudo	Raw	288.A.C	252.A.C	244.A.C	261.A.C

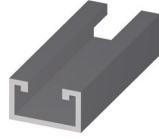
**Z-71**  
PERFIL Z-71  
Z-71 PROFILE



**Z-72**  
PERFIL Z-72  
Z-72 PROFILE



**O-1**  
PERFIL O-1  
O-1 PROFILE



**A-105**  
PERFIL A-105  
A-105 PROFILE



**A-135**  
PERFIL A-135  
A-135 PROFILE

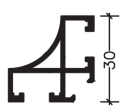
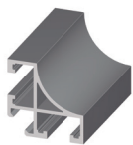


**T-30**  
PERFIL T-30  
T-30 PROFILE



Longitud / Lenght : 6 m.	Longitud / Lenght : 5,4m.	Longitud / Lenght : 6 m.	Longitud / Lenght : 6 m.	Longitud / Lenght : 6 m.	Longitud / Lenght : 6 m.
REF.	REF.	REF.	REF.	REF.	REF.
-	-	201.L.B	256.L.B	221.L.B	254.L.B
REF.	REF.	REF.	REF.	REF.	REF.
-	-	201.A.P	256.A.P	221.A.P	254.A.P
-	-	201.A.PM	256.A.PM	221.A.PM	254.A.PM
REF.	REF.	REF.	REF.	REF.	REF.
2286.A.C	2289.A.C	201.A.C	256.A.C	221.A.C	254.A.C

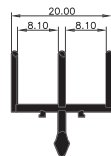
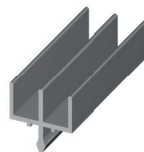
**CM-30**  
PERFIL CM-30  
CM-30 PROFILE



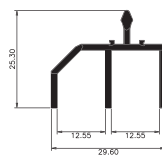
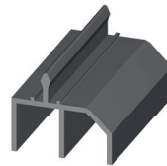
**CC-11**  
PERFIL CC-11  
CC-11 PROFILE



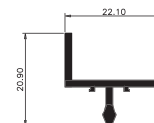
**CR-20**  
PERFIL CR-20  
CR-20 PROFILE



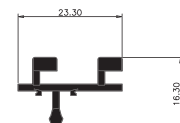
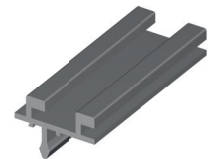
**CR-M**  
PERFIL CR-M  
CR-M PROFILE



**CR-L**  
PERFIL CR-L  
CR-L PROFILE



**CR-I**  
PERFIL CR-I  
CR-I PROFILE



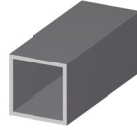
Longitud / Lenght : 6 m.	Longitud / Lenght : 6 m.	Longitud / Lenght : 6 m.	Longitud / Lenght : 6 m.	Longitud / Lenght : 6 m.	Longitud / Lenght : 6 m.
REF.	REF.	REF.	REF.	REF.	REF.
253.L.B	272.L.B	273.L.B	274.L.B	275.L.B	276.L.B
REF.	REF.	REF.	REF.	REF.	REF.
253.A.P	272.A.P	273.A.P	274.A.P	275.A.P	276.A.P
253.A.PM	272.A.PM	273.A.PM	274.A.PM	275.A.PM	276.A.PM
REF.	REF.	REF.	REF.	REF.	REF.
253.A.C	272.A.C	273.A.C	274.A.C	275.A.C	276.A.C

# S30

## ADINOR

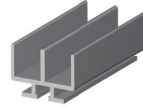
### TC-20

PERFIL TC-20  
TC-20 PROFILE



### CR-24

PERFIL CR-24  
CR-24 PROFILE



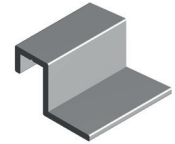
### TAPACANAL

TAPACANAL  
GROOVE COVER PROFILE



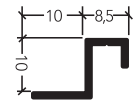
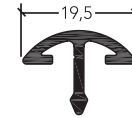
### PANELADO

PERFIL PANELADO TECHO  
SHELF SUPPORT PROFILE



#### 6m. Condiciones especiales de envío

#### 6m. Special shipping conditions



ACABADOS	FINISHINGS	Longitud / Length : 6 m.	Longitud / Length : 6 m.	Longitud / Length : 6 m.	Longitud / Length : 6 m.
<b>LACADOS</b>	<b>COATED</b>	REF.	REF.	REF.	REF.
Blanco	White	291.L.B	271.L.B	3441.L.B	3758.L.B
<b>ANODIZADOS</b>	<b>ANODIZED</b>	REF.	REF.	REF.	REF.
Plata Brillo	Polished Silver	291.A.P	271.A.P	3441.A.P	3758.A.P
Plata Mate	Natural Anodized	291.A.PM	271.A.PM	3441.A.PM	3758.A.PM
<b>SIN ANODIZAR</b>	<b>NO ANODIZED</b>	REF.	REF.	REF.	REF.
Crudo	Raw	291.A.C	271.A.C	3441.A.C	3758.A.C
Latón	Brass	-	-	-	-

### E-30H

NUDO E-30 HUECO ZAMAK  
E-30H ZAMAK TRIPLE  
CONNECTION ANGLE



### T-30 LATÓN

NUDO T-30 LATÓN  
T-30 BRASS TRIPLE  
CONNECTION ANGLE



### MC-40 ZAMAK

NUDO MC-40 ZAMAK  
MC-40 ZAMAK TRIPLE  
CONNECTION ANGLE



### A-105 ZAMAK

NUDO A-105 ZAMAK  
A-105 ZAMAK TRIPLE  
CONNECTION ANGLE



ACABADOS	FINISHINGS	REF.	REF.	REF.	REF.
<b>LACADOS</b>	<b>COATED</b>	REF.	REF.	REF.	REF.
Blanco	White	3555B	3541B	3613B	3563B
<b>ANODIZADOS</b>	<b>ANODIZED</b>	REF.	REF.	REF.	REF.
Plata Brillo	Polished Silver	3555P	3541P	3613P	3563P
Plata Mate	Natural Anodized	3555PM	3541PM	3613PM	3563PM
<b>SIN ANODIZAR</b>	<b>NO ANODIZED</b>	REF.	REF.	REF.	REF.
Crudo	Raw	3555SP	3541SP	3613SP	3563SP
Latón	Brass	-	3541	-	-

## MC-30 ZAMAK

**NUDO MC-30 ZAMAK**  
MC-30 ZAMAK TRIPLE  
CONNECTION ANGLE



## MC-30 ABS

**NUDO MC-30 ABS**  
MC-30 ABS TRIPLE  
CONNECTION ANGLE



## MC-30H

**NUDO HUECO MC-30H ZAMAK**  
MC-30 H ZAMAK TRIPLE  
CONNECTION ANGLE



## MC-30 LATÓN

**NUDO MC 30 LATÓN**  
MC-30 BRASS TRIPLE  
CONNECTION ANGLE



## E-30 ABS

**NUDO E-30 ABS**  
E-30 ABS TRIPLE  
CONNECTION ANGLE



## E-30 LATÓN

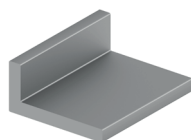
**NUDO E-30 LATÓN**  
E-30 BRASS TRIPLE  
CONNECTION ANGLE



REF.	REF.	REF.	REF.	REF.	REF.
3513B	3514B	3503B	3511B	3554B	3551B
REF.	REF.	REF.	REF.	REF.	REF.
3513P	3514P	3503P	3511P	3554P	3551P
3513PM	3514PM	3503PM	3511PM	3554PM	3551PM
REF.	REF.	REF.	REF.	REF.	REF.
3513SP	3514SP	3503SP	3511SP	3554SP	3551SP
-	-	-	3511	-	3551

## ANGULAR

**ANGULAR 19x40mm**  
19x40mm ANGLE PROFILE



## MCO-30 ZAMAK

**NUDO MCO-30 ZAMAK**  
MCO-30 ZAMAK TRIPLE  
CONNECTION ANGLE



## CM-30 ZAMAK

**NUDO CM-30 ZAMAK**  
CM-30 ZAMAK TRIPLE  
CONNECTION ANGLE



## CM-30 ABS

**NUDO CM-30 ABS**  
CM-30 ABS TRIPLE  
CONNECTION ANGLE



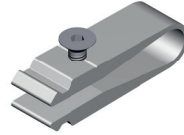
REF.	REF.	REF.	REF.
-	3523B	3533B	3534B
REF.	REF.	REF.	REF.
-	3523P	3533P	3534P
-	3523PM	3533PM	3534PM
REF.	REF.	REF.	REF.
2288.A.C	3523SP	3533SP	3534SP
-	-	-	-

# S30

## ADINOR

### GRAPA UNIÓN ALUMINIO

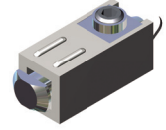
PIN CONECTOR



REF.  
3761

### TENSOR UNIÓN 5 PIEZAS

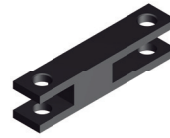
PERPENDICULAR & PARALLEL JOINT



REF.  
3711

### PLANTILLA TENSOR / GRAPA

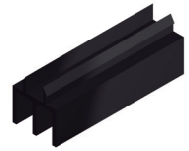
DRILLING JIG FOR JOINTS



REF.  
3891

### CORREDERA SUPERIOR PVC

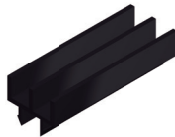
UPPER SLIDING DOOR PROFILE



REF.	Acabados	Finishings
3421N	Negro	Black
3421G	Gris	Grey

### CORREDERA INFERIOR PVC

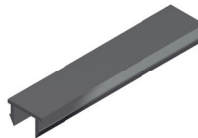
LOWER SLIDING DOOR PROFILE



REF.	Acabados	Finishings
3422N	Negro	Black
3422G	Gris	Grey

### TAPACANAL PVC

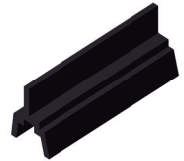
GROOVE COVER PROFILE



REF.	Acabados	Finishings
3441B	Blanco	White
3441N	Negro	Black
3441O	Oro	Gold
3441P	Plata Brillo	Polished Silver
3441R	Rojo	Red

### TIRASOPORTE CRISTAL PVC

SHELF SUPPORT PROFILE



REF.  
3411

### JUEGO GOMA ACRISTALAR PVC

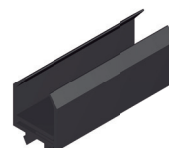
PVC GASKET



REF.  
3461

### JUEGO JUNQUILLO RÍGIDO ACRISTALAR

CLAMPING PROFILE SET



REF.  
3431

### GOMA ACRISTALAR 4mm.

4mm. GASKET



REF.  
3424

### GOMA ACRISTALAR 5mm.

5mm. GASKET



REF.  
3425

### GOMA ACRISTALAR 6mm.

6mm. GASKET



REF.  
3426

### PERFIL ADHESIVO ANTIVIBRACIÓN 6mm.

6mm. SELF-ADHESIVE SLOT REDUCER PROFILE

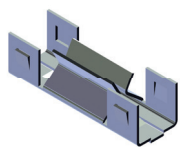


REF.  
3427



### CLIP FIJACIÓN CORREDERA

CLIP CONNECTION



REF.  
375

Para perfil **CR-20, CR-M, CR-L, CR-I**  
For **CR-20, CR-M, CR-L, CR-I** profile

### ESCUADRA PLANA NYLON

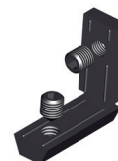
NYLON FLAT INTERIOR BRACKET 90°



REF.  
3782

### ESCUADRA VERTICAL NYLON

NYLON VERTICAL INTERIOR BRACKET 90°



REF.  
3781

### ESCUADRA CUADRANGULAR NYLON

NYLON INTERIOR BRACKET 90°



REF.  
3785

### ESCUADRA INGLETE CC11 NYLON

NYLON MITRE CUT INTERIOR BRACKET



REF.  
3783

### COJINETE CC11

CC11 ROLLER



REF.  
385

Carcasa + 2 Rodamientos  
Shell + 2 Rollers

### TAPETA MC-30 NYLON

MC-30 END COVER



REF.  
3811

### TAPETA MC-40 NYLON

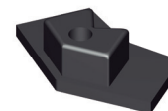
MC-40 END COVER



REF.  
3815

### TAPETA A-135 NYLON

A-135 END COVER



REF.  
3816

### TAPETA TC-20 NYLON

TC-20 END COVER



REF.  
3820

### TAPETA R-4 NYLON

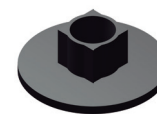
R-4 END COVER



REF.  
3814

### TAPETA OC-8 NYLON

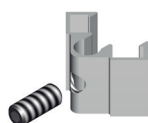
OC-8 END COVER



REF.  
3818

### PORTAESTANTES ALUMINIO

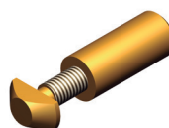
PANEL CLAMP



REF.  
3913

### PORTAESTANTES 2 PIEZAS

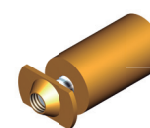
2 PZ. PANEL CLAMP



REF.  
3911

### PORTAESTANTES 3 PIEZAS

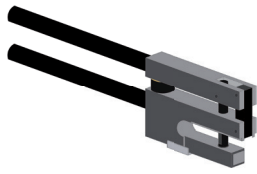
3 PZ. PANEL CLAMP



REF.	ACABADOS / FINISHINGS
39120	(oro / gold)
3912P	(plata / silver)

### PRENSA MANUAL GRAPA / TENSOR

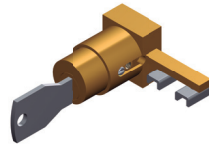
HAND DRILLING JIG FOR JOINTS



REF.  
3894

### CERRADURA PERFIL CC11

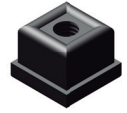
LOCK



REF.	ACABADOS / FINISHINGS
38420	(oro / gold)
3842P	(plata / silver)

### INSERTO PIE M8

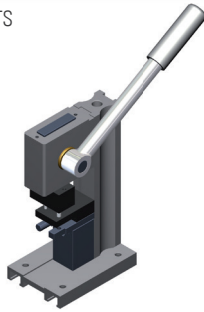
M8 THREADED INSERT



REF.  
38731

### PRENSA GRAPA / TENSOR

DRILLING JIG FOR JOINTS



REF.  
3893

### PIE REGULABLE M10

M10 ADJUSTABLE FEET



REF.  
3871

### PIE REGULABLE M8

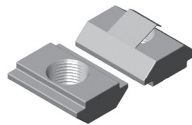
M8 ADJUSTABLE FEET



REF.  
3873

### TUERCA ANTI DESLIZANTE M4

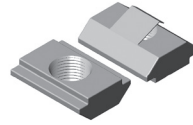
M4 SPRING NUT



REF.  
52024

### TUERCA ANTI DESLIZANTE M5

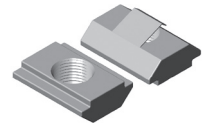
M5 SPRING NUT



REF.  
52025

### TUERCA ANTI DESLIZANTE M6

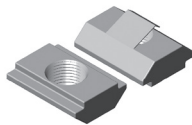
M6 SPRING NUT



REF.  
52026

### TUERCA ANTI DESLIZANTE M8

M8 SPRING NUT



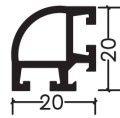
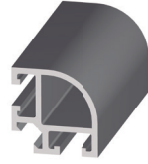
REF.  
52028

# S20

**ADINOR**

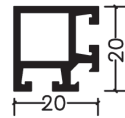
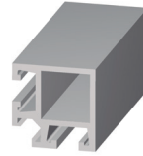
## MC-20

PERFIL MC-20  
MC-20 PROFILE



## E-20

PERFIL E-20  
E-20 PROFILE



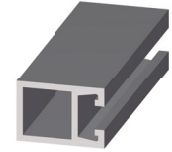
## O-S

PERFIL O-S  
O-S PROFILE



## 1-S

PERFIL 1-S  
1-S PROFILE

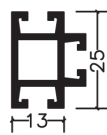
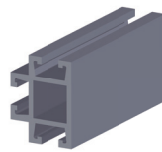


6m. Condiciones especiales de envío  
6m. Special shipping conditions

ACABADOS	FINISHINGS	Longitud / Lenght : 6 m.	Longitud / Lenght : 6 m.	Longitud / Lenght : 6 m.	Longitud / Lenght : 6 m.
<b>LACADOS</b>	<b>COATED</b>	REF.	REF.	REF.	REF.
Blanco	White	M251.L.B	M255.L.B	M201.L.B	M211.L.B
<b>ANODIZADOS</b>	<b>ANODIZED</b>	REF.	REF.	REF.	REF.
Inox	Inox	M251.A.X	M255.A.X	M201.A.X	M211.A.X
Plata Mate	Natural Anodized	M251.A.PM	M255.A.PM	M201.A.PM	M211.A.PM
<b>SIN ANODIZAR</b>	<b>NO ANODIZED</b>	REF.	REF.	REF.	REF.
Crudo	Raw	M251.A.C	M255.A.C	M201.A.C	M211.A.C

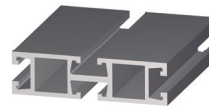
## 3-S

PERFIL 3-S  
3-S PROFILE



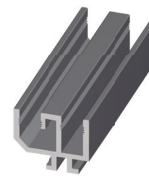
## 4-S

PERFIL 4-S  
4-S PROFILE



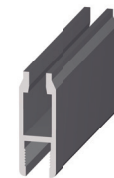
## CR-18

PERFIL CR-18  
CR-18 PROFILE



## CC-8

PERFIL CC-8  
CC-8 PROFILE



ACABADOS	FINISHINGS	Longitud / Lenght : 6 m.	Longitud / Lenght : 6 m.	Longitud / Lenght : 6 m.	Longitud / Lenght : 6 m.
<b>LACADOS</b>	<b>COATED</b>	REF.	REF.	REF.	REF.
Blanco	White	M233.L.B	M242.L.B	M271.L.B	M272.L.B
<b>ANODIZADOS</b>	<b>ANODIZED</b>	REF.	REF.	REF.	REF.
Inox	Inox	M233.A.X	M242.A.X	M271.A.X	M272.A.X
Plata Mate	Natural Anodized	M233.A.PM	M242.A.PM	M271.A.PM	M272.A.PM
<b>SIN ANODIZAR</b>	<b>NO ANODIZED</b>	REF.	REF.	REF.	REF.
Crudo	Raw	M233.A.C	M242.A.C	M271.A.C	M272.A.C

# S20

## ADINOR

**GI-14**  
PERFIL GI-14  
GI-14 PROFILE



**NUDO MC-20**  
NUDO MC-20 ZAMAK  
MC-20 ZAMAK TRIPLE  
CONNECTION ANGLE



**NUDO E-20**  
NUDO E-20 ZAMAK  
E-20 ZAMAK TRIPLE  
CONNECTION ANGLE



**6m. Condiciones especiales de envío**  
**6m. Special shipping conditions**



ACABADOS	FINISHINGS	Longitud / Length : 6 m.		
<b>LACADOS</b>	<b>COATED</b>	REF.	REF.	REF.
Blanco	White	M273.L.B	M3513B	M3553B
<b>ANODIZADOS</b>	<b>ANODIZED</b>	REF.	REF.	REF.
Inox	Inox	M273.A.X	-	-
Plata Mate	Natural Anodized	M273.A.PM	M3513PM	M3553PM
Plata Brillo	Polished Silver	-	M3513P	M3553P
<b>SIN ANODIZAR</b>	<b>NO ANODIZED</b>	REF.	REF.	REF.
Crudo	Raw	M273.A.C	M3513	M3553

### GRAPA DE UNIÓN

PIN CONECTOR

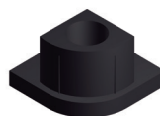


REF.  
M3761

+ ESPÁRRAGO  
+SCREW

### TAPETA MC-20 NYLON

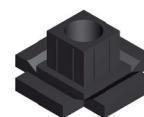
MC-20 END COVER



REF.  
M3811

### TAPETA ESTRELLA NYLON

STAR END COVER



REF.  
M3814

### ESCUADRA VERTICAL NYLON

NYLON VERTICAL INTERIOR BRACKET 90°



REF.  
M3781

### ESCUADRA PLANA NYLON

NYLON FLAT INTERIOR BRACKET 90°



REF.  
M3782

### ESCUADRA CUADRANGULAR NYLON

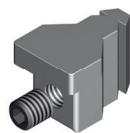
NYLON INTERIOR BRACKET 90°



REF.  
M3785

### PORTAESTANTES INTERIOR

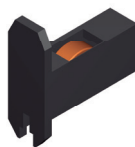
PANEL CLAMP



REF.  
M3911

### COJINETES CORREDERA CC-8

CC-8 ROLLER



REF.  
M3852

Carcasa + 2 Rodamientos  
Shell + 2 Rollers

### BISAGRA PUERTA NYLON

NYLON HINGE



REF.  
M3843

### TIRADOR PUERTA NYLON

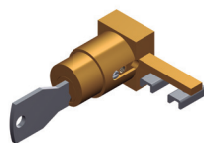
NYLON HANDLE



REF.  
M3844

### CERRADURA PERFIL CC-8

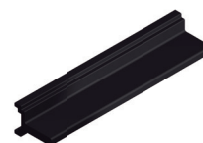
LOCKE



REF.	ACABADOS / FINISHINGS
M3842O	(oro / gold)
M3842P	(plata / silver)

### TIRASOPORTE CRISTAL PVC

PVC SHELF SUPPORT PROFILE



REF.  
M3411

### JUEGO JUNQUILLO RÍGIDO PVC

CLAMPING PROFILE SET



REF.  
M3431

### JUEGO GOMA ACRISTALAR PVC

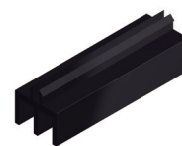
PVC GASKET



REF.  
M3461

### PERFIL CORREDERA SUPERIOR PVC

UPPER SLIDING DOOR PROFILE



REF.  
M3421

### PERFIL CORREDERA INFERIOR PVC

LOWER SLIDING DOOR PROFILE



REF.  
M3422

### TAPA-RANURA

GROOVE COVER PROFILE



REF.	Acabados	Finishings
M3441B	Blanco	White
M3441N	Negro	Black
M3441O	Oro	Gold
M3441M	Marrón	Brown

### PLANTILLA MC-20

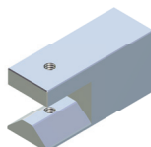
MC-20 DRILLING JIG FOR JOINTS



REF.  
M3891

### PLANTILLA 1-S

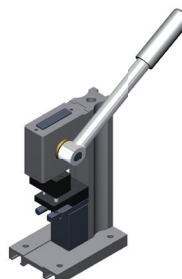
1-S DRILLING JIG FOR JOINTS



REF.  
M3892

### PRENSA (2 PUNZONES)

DRILLING JIG FOR JOINTS



REF.  
M3893