

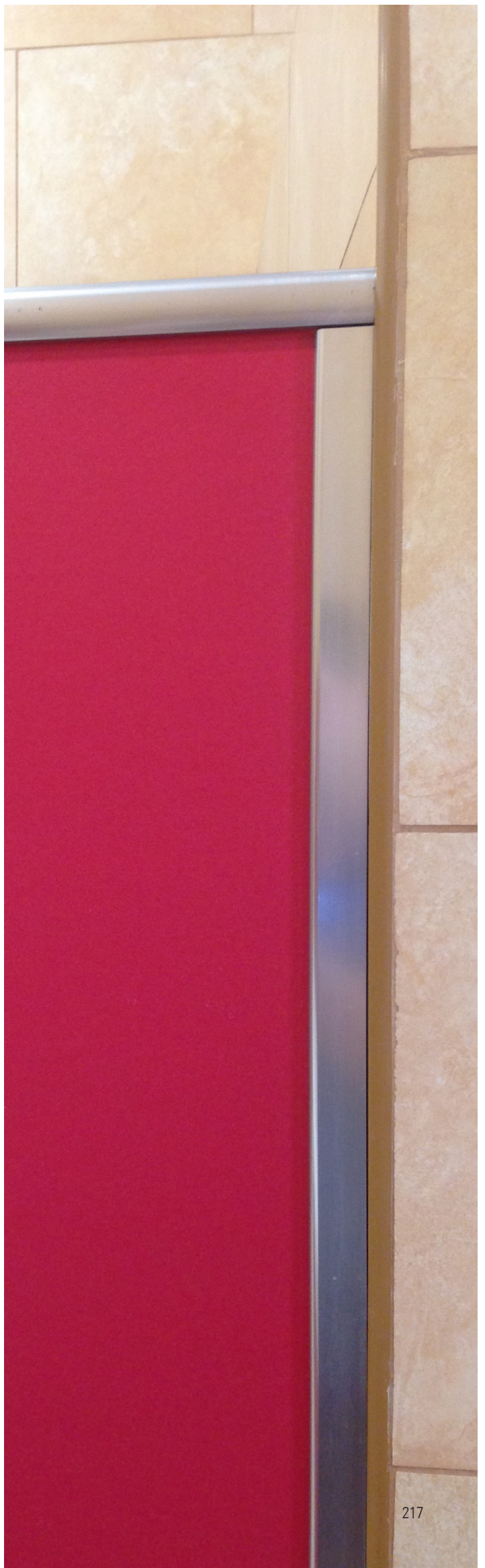


# HERRAJES CABINA SANITARIA

CUBICLE PARTITION HARDWARE

CABINA SANITARIA



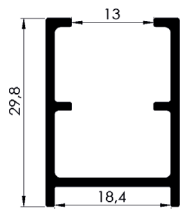


**6m. Condiciones especiales de envío**  
**6m. Special shipping conditions**

**PERFIL PANEL ALUMINIO 13mm.**

13mm. BOARD ALUMINIUM PROFILE

Longitud / Length : 6 m.



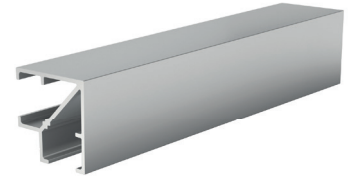
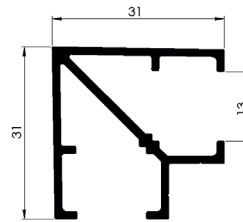
REF.	Anodizado	Anodized
SCA-PN13.A.PM	Plata Mate	Natural Anodized
SCA-PN13.A.X	Inox	Inox

ALUMINIO ANODIZADO / ANODIZED ALUMINIUM

**PERFIL ESQUINA PANEL ALUMINIO 13mm**

90° JOING ALUMINIUM PROFILE

Longitud / Length : 6 m.



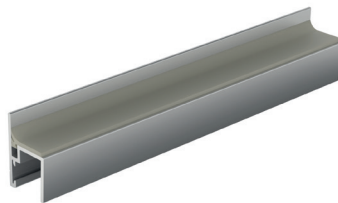
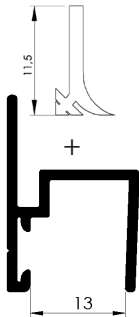
REF.	Anodizado	Anodized
SCA-PE13.A.PM	Plata Mate	Natural Anodized
SCA-PE13.A.X	Inox	Inox

ALUMINIO ANODIZADO / ANODIZED ALUMINIUM

**PERFIL ALUMINIO REMATE PUERTA 13mm.**

13mm. DOOR ALUMINIUM PROFILE

Longitud / Length : 6 m.



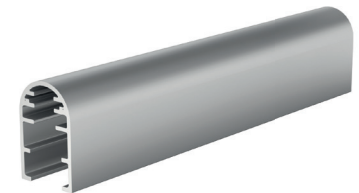
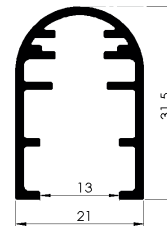
REF.	Anodizado	Anodized
SCA-PP13.A.PM	Plata Mate	Natural Anodized
SCA-PP13.A.X	Inox	Inox

ALUMINIO ANODIZADO / ANODIZED ALUMINIUM

**PERFIL SUPERIOR ALUMINIO 13mm.**

SUPERIOR ALUMINIUM PROFILE

Longitud / Length : 6 m.

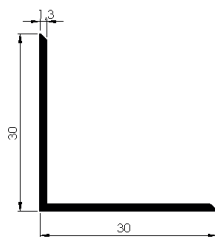


REF.	Anodizado	Anodized
SCA-PR13.A.PM	Plata Mate	Natural Anodized
SCA-PR13.A.X	Inox	Inox

ALUMINIO ANODIZADO / ANODIZED ALUMINIUM

**PERFIL ANGULAR ALUMINIO**

OUTER & INNER ALUMINIUM CONNECTION  
 ANGLE PROFILE



REF.		
SCA-PAA	30x30x1,3mm. Ext.2 m.	1

ALUMINIO ANODIZADO / ANODIZED ALUMINIUM

**ESCUADRA UNION MONTAJE A INGLETE**

INTERNAL INNER CONNECTION ANGLE FOR MITTRE CUT MOUNTING



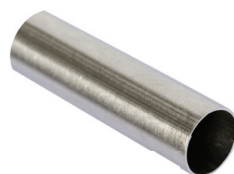
REF.	
ME700	1

ACERO GALVANIZADO / ZINC PLATED STEEL

**TUBO DIÁMETRO 25**

25mm Ø INOX PIPE

Longitud / Length : 2 m.

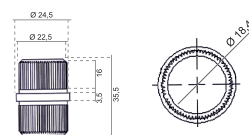


REF.	
SCA-TR25	1

INOX /SS304

**EMPALME BARRA INTERNO**

INTERNAL PIPE JOINT

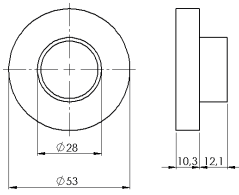


REF.	
SCA-ET	1

INOX /SS304

## SOPORTE TUBO PARED

WALL FIXING PLATE

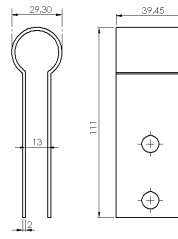


REF.	
SCA-SPT	10

INOX /SS304

## SOPORTE SUPERIOR PANEL / TUBO

PIPE - BOARD CLAMP

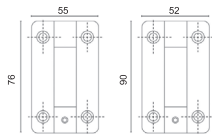


REF.	
SCA-SSPT	5

INOX /SS304

## BISAGRAS

HINGES

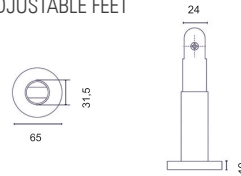


REF.		
SCA-BCM	Con muelle \ With Spring	10
SCA-BSM	Sin muelle \ Without Spring	10
SCA-BSMEC	Sin muelle \ Without Spring ECO	10

INOX /SS304

## PIE SUELO REGULABLE

ADJUSTABLE FEET

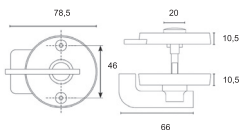


REF.		
SCA-PP316	11 - 18 cm INOX / SS316	5
SCA-PP	11 - 18cm.	5
SCA-PPG	21 - 38cm.	5
SCA-RP1	Adaptador pie 1mm. \ 1mm gasket	20

INOX /SS304

## CONDENA - PESTILLO

LOCK

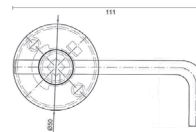


REF.	
SCA-PI	5

INOX /SS304

## CONDENA - PESTILLO CON VARILLA

LOCK

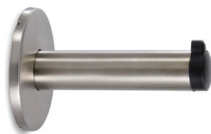
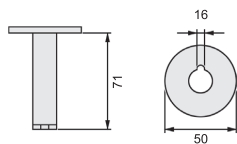


REF.	
SCA-CV	5

INOX /SS304

## PERCHA

HANGER

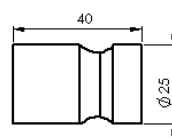


REF.	
SCA-PCG	20

INOX /SS304

## JUEGO POMO TIRADOR 25mm.

25mm. Ø OUTER & INNER HANDLE



REF.	
SCA-JT25	10

INOX /SS304

## NUDO CONECTOR 2 TUBOS 90°

90° JOINT (TWO PIPES)



REF.	
SCA-CT90	10

INOX /SS304

## NUDO CONECTOR 3 TUBOS 90°-180°

180° JOINT (THREE PIPES)



REF.	
SCA-CTT	10

INOX /SS304

**6m. Condiciones especiales de envío**  
**6m. Special shipping conditions**

**ESCUADRA FIJACIÓN PARED**  
 CONNECTION ANGLE

REF.		
SCA-E	20	

**INOX /SS304**

**SOPORTE U FIJACIÓN PARED**  
 WALL FIXING BRACKET

REF.		
SCA-SUP	U 50mm.	1

**INOX /SS304**

**SOPORTE PARED LATERAL**  
 LATERAL BOARD JOINT

REF.		
SCA-SFP	1	

**INOX /SS304**

**SOPORTE PARED CENTRAL**  
 CENTRAL BOARD JOINT

REF.		
SCA-SIP	1	

**INOX /SS304**

**SOPORTE U FIJACIÓN PARED**  
 WALL FIXING BRACKET

REF.		
SCA-PUP	U 1800mm.	1

**INOX /SS304**

**PERFIL ANGULAR ACERO INOXIDABLE**  
 OUTER & INNER INOX CONNECTION ANGLE PROFILE

REF.		
SCA-PAE	33x33x1,2mm. Ext.1,8 m.	1

**INOX /SS304**

**TORNILLO ROSCACHAPA INOX**  
 THREAD TAPPING SCREW

REF.		TORNILLO / SCREW
SCA-TRCH	100	3,7x10

**INOX /SS304**

**TORNILLOS PASANTE INOX**  
 THROUGH BOLT

REF.		TORNILLO / SCREW
SCA-TP	100	5x11-14

**INOX /SS304**

**JUEGO HERRAJES PUERTA CORREDERA - ACERO INOX**  
 SLIDING DOORS FITTINGS - INOX

REF.		
SCA-JHC	5	

**INOX /SS304**

**JUEGO HERRAJES PUERTA CORREDERA - ALUMINIO**  
 SLIDING DOORS FITTINGS - ALUMINIUM

REF.		
SCA-JHA	1	

**INOX /SS304**  
**ALUMINIO ANODIZADO / ALUMINIUM ANODIZED**

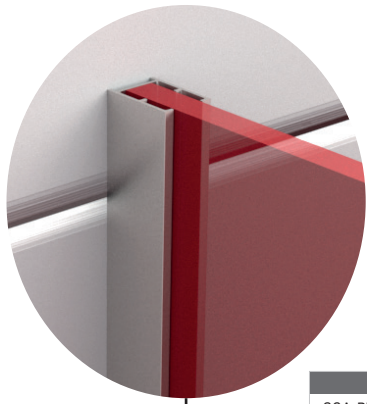
# CROQUIS DE MONTAJE

ASSEMBLY INSTRUCTIONS

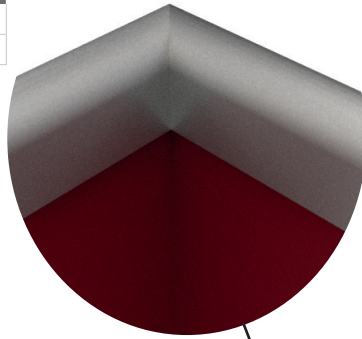


CABINA SANITARIA



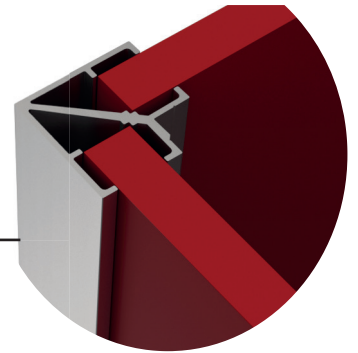


REF.  
SCA-PR13.A.PM  
SCA-PR13.A.X

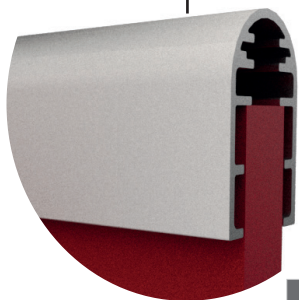


REF.  
ME700

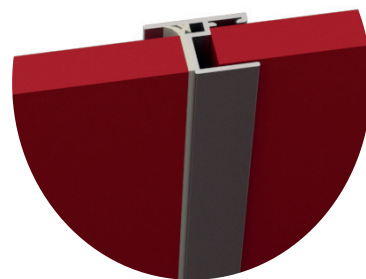
REF.  
SCA-PN13.A.PM  
SCA-PN13.A.X



REF.  
SCA-PE13.A.PM  
SCA-PE13.A.X



REF.  
SCA-PR13.A.PM  
SCA-PR13.A.X



REF.  
SCA-PP13.A.PM  
SCA-PP13.A.X



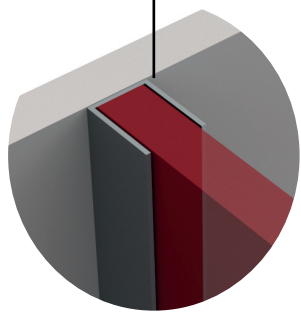
REF.  
SCA-SIP



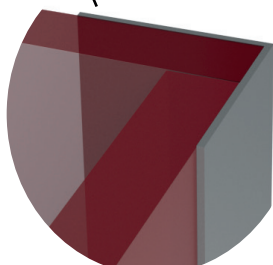
REF.  
SCA-SUP



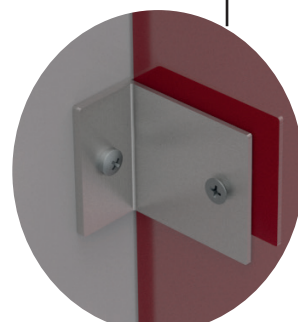
REF.  
SCA-E



REF.  
SCA-PUP



REF.  
SCA-PAE



REF.  
SCA-SFP

## CABINAS SANITARIAS A MEDIDA

### CUSTOM CUBICLE PARTITION

Posibilidad de suministrar las cabinas totalmente acabadas y preparadas para su instalación incluyendo todos los accesorios necesarios.

La fabricación se realiza con laminado compacto fenólico de un espesor de 12mm con dos caras decorativas y un núcleo negro.

Todas las piezas fenólicas irán con los cantos mecanizados y redondeados, así como los orificios y pretaladros para una mayor facilidad de montaje.

Para el herraje disponemos de perfilera de aluminio, acero inoxidable ó mixto. Todo el herraje de acero inoxidable es calidad AISI304, pudiéndose solicitar AISI316.

Gama de acabados fenólicos:

We can supply fully finished cubicle partition, ready to install including all necessary hardware.

Cubicle partition made by phenolic compact laminate, 12mm thickness with two decorative faces and black core.

All phenolic boards come with mechanized and rounded edges as well as holes and knockouts made for greater flexibility and easy installation.

We have several options for hardware: aluminum, stainless steel or mixed All stainless-steel hardware is AISI304 quality, also AISI316 can be requested.

Range of phenolic finishes:

