

A photograph of the interior of a wooden cabinet. The walls and shelves are made of light-colored wood with a visible grain. A black metal bar is mounted horizontally across the middle. A bright light source is visible on the left side, creating a strong glow and casting shadows. The text 'ILUMINACIÓN' and 'LIGHTING' is overlaid in white on a semi-transparent dark rectangle in the upper center.

ILUMINACIÓN

LIGHTING

TIRAS LED Y COMPLEMENTOS

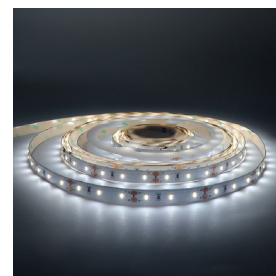
LED STRIPES AND COMPLEMENTS

ADINOR

TIRA LED FLEXIBLE 18W

FLEXIBLE LED STRIP

| | |
|-----------------------------------|------------------------------------|
| 3m | 3m |
| 4000K | 4000K |
| Anchura 10mm | Width 10mm |
| 60 Led por metro, 18W cada 3m. | 60 Led per meter, 18W every 3m. |
| IP20 | IP20 |
| 12V | 12V |
| 2 lados con conexión | 2 sides whit connection. |
| 2m de cable para conexión. | 2m cable for connection |



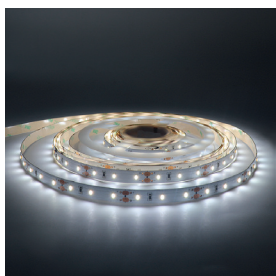
REF.

L.AFS35-60

TIRA LED FLEXIBLE 36W

FLEXIBLE LED STRIP

| | |
|----------------------------------|------------------------------------|
| 3m | 3m |
| 4000K | 4000K |
| Anchura 10mm | Width 10mm |
| 60 Led por metro, 36W cada 3m | 60 Led per meter, 36W every 3m. |
| IP20 | IP20 |
| 12V | 12V |
| 2 lados con conexión | 2 sides whit connection. |
| 2m de cable para conexión. | 2m cable for connection |



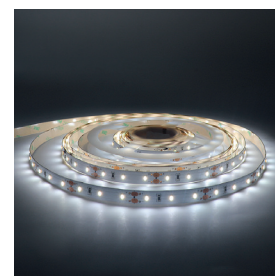
REF.

L.AFS25-60

TIRA LED FLEXIBLE 42W

FLEXIBLE LED STRIP

| | |
|-----------------------------------|-------------------------------------|
| 3m | 3m |
| 4000K | 4000K |
| Anchura 10mm | Width 10mm |
| 120 Led por metro, 42W cada 3m | 120 Led per meter, 42W every 3m. |
| IP20 | IP20 |
| 12V | 12V |
| 2 lados con conexión | 2 sides whit connection. |
| 2m de cable para conexión. | 2m cable for connection |

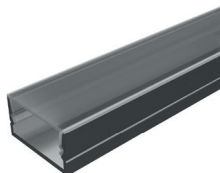
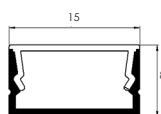


REF.

L.AFS27-120

PERFIL ALUMINIO SUPERFICIE 3m + DIFUSOR

3m SURFACE MOUNTED ALUMINIUM PROFILE + MILKY FLAT COVER

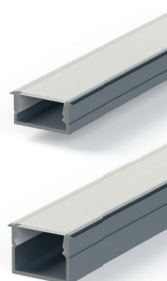
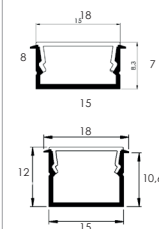


REF.

L.AAP46F

PERFIL ALUMINIO EMBUTIR 3m + DIFUSOR

3m RECESSED MOUNTED ALUMINIUM PROFILE + MILKY FLAT COVER



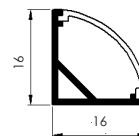
DESCRIP.

REF.

| | |
|--|----------|
| Perfil 7 mm alto / 7 mm height profile | L.AAP44F |
| Perfil 10,6 mm alto / 10,6 mm height profile | L.AAP45 |

PERFIL ANGULAR ALUMINIO SUPERFICIE 3m + DIFUSOR

3m SURFACE MOUNTED ANGULAR ALUMINIUM PROFILE + MILKY FLAT COVER



REF.

L.AAP59F

JUEGO TAPAS LATERALES PERFIL SUPERFICIE

END CAP FOR L.AAP46F

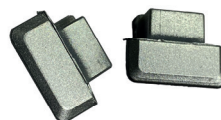


REF.

L.AEC46

JUEGO TAPAS LATERALES PERFIL EMBUTIR

END CAP FOR L.AAP44F AND L.AAP45



DESCRIP.

REF.

| | |
|--|---------|
| Perfil 7 mm alto / 7 mm height profile | L.AEC44 |
| Perfil 10,6 mm alto / 10,6 mm height profile | L.AEC45 |

JUEGO DE TAPAS LATERALES PERFIL ANGULAR A SUPERFICIE

END CAP FOR L.AAP59F



REF.

L.ASM59

SENSOR DE PROXIMIDAD PARA EMBUTIR

RECESSED MOUNTED SENSOR



REF.
L.AID01

SENSOR DE PROXIMIDAD DOBLE PARA EMBUTIR

RECESSED MOUNTED DOUBLE SENSOR



REF.
L.AID05

SENSOR DE PROXIMIDAD TRIPLE PARA EMBUTIR

RECESSED MOUNTED TRIPLE SENSOR



REF.
L.AID08

SENSOR DE PROXIMIDAD DE SUPERFICIE

SURFACE MOUNTED SENSOR



REF.
L.AID02

SENSOR DE PROXIMIDAD DOBLE DE SUPERFICIE

SURFACE MOUNTED DOUBLE SENSOR



REF.
L.AID06

INTERRUPTOR DIMMER DE ALUMINIO PARA EMBUTIR

(Controla la intensidad de la luz)
RECESSED MOUNTED ALUMINIUM DIMMER SWITCH



REF.
L.ATS03

SENSOR INALÁMBRICO DE PRESENCIA 2.4G, (CON BATERIA)

WIRELESS PRESENCE SENSOR SWITCH, 2.4G,
WITH BATTERY

Ø40x13,5mm



REF.
L.APR08

INTERRUPTOR Y DIMMER (controla intensidad) INALÁMBRICO, 2.4G, (CON BATERIA)

TOUCH AND DIMMER SWITCH, 2.4G WIRELESS,
WITH BATTERY

Ø40x13,5mm



REF.
L.ATS14

DISTRIBUIDOR 6 SALIDAS

6un branch box



REF.
L.AL806-6

CABLE PROLONGADOR TIRA LED 2m

2m LED STRIP EXTENSION CABLE



REF.
L.ACC42

CABLE PROLONGADOR SENSOR 2m

2m SENSOR EXTENSION CABLE



REF.
L.ACC27

TRANSFORMADOR 18W, 12V+2m de cable
18W LED TRANSFORMER



REF.
L.ALD41

TRANSFORMADOR 50W, 12V+2m de cable
50W LED TRANSFORMER



REF.
L.ALD42

TRANSFORMADOR 85W, 12V+ 2m de cable
85W LED TRANSFORMER



REF.
L.ALD43

TRANSFORMADOR 60W + DISTRIBUIDOR
60W TRANSFORMER + BRANCH BOX



REF.
L.ALD18

TRANSFORMADOR PARA SENSOR INALÁMBRICO 50W
50W WIRELESS CONTROL LED TRANSFORMER



REF.
L.ALD42.L01

TRANSFORMADOR PARA SENSOR INALÁMBRICO 85W
85W WIRELESS CONTROL LED TRANSFORMER



REF.
L.ALD43.L01

REGLETAS LED

STICKS LED

ADINOR

REGLETA LED STICK SF PARA EMBUTIR 24V

24 V FLUSH MOUNT STICK SF LED + COVER

CRI > 95

100°
Ángulo luz

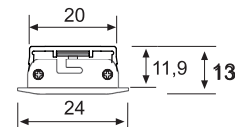
A++
A+
A

IP
44

UL
Bajo pedido

CE

3
GARANTIA



Iluminación casi natural.
Factor cromático CRI > 95.
Durabilidad 30.000 horas.

CRI > 95.
Long life 30,000 hours.

| REF. | WATIOS mt | VOLTIOS | LM | LONGITUD / LENGHT | LUZ / LIGHT |
|----------|-----------|---------|------|-------------------|------------------------|
| L1102078 | 6,5W | 24V | 309 | 330 mm | 4000° K BLANCO / WHITE |
| L2202078 | 10,8W | 24V | 496 | 530 mm | 4000° K BLANCO / WHITE |
| L3302078 | 17,3W | 24V | 776 | 830 mm | 4000° K BLANCO / WHITE |
| L4402078 | 23,8W | 24V | 1056 | 1130 mm | 4000° K BLANCO / WHITE |

REGLETA LED STICK F SOBREPUESTA CON COLOR AJUSTABLE 24V

24 V SURFACE MOUNT STICK F LED + COVER. WITH ADJUSTABLE COLOUR APPEARANCE

CRI > 82

110°
Ángulo luz

A++
A+
A

IP 20

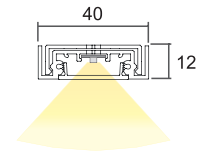
CE

3
GARANTÍA



Factor cromático CRI > 82.
Regleta minimalista extraplana 12 mm. altura.
Durabilidad 30.000 horas.
Color ajustable 2700° K - 5000° k.
Se suministra con cable de 2,5 m. y 2 grapas de fijación.

CRI > 82.
12 mm. height minimal stick.
2,5 m. power cable supply + 2 fixation clips.
Long life 30,000 hours.
Adjustable 2700° K - 5000° K.



| REF. | WATIOS mt | VOLTIOS | LM | LONGITUD / LENGHT | LUZ REGULABLE / ADJUSTABLE LIGHT |
|----------|-----------|---------|-----|-------------------|----------------------------------|
| L5502078 | 6,8W | 24V | 354 | 450 mm | 2700° K - 5000° K |
| L6602078 | 9,5W | 24V | 494 | 600 mm | 2700° K - 5000° K |
| L0702078 | 14,4W | 24V | 749 | 900 mm | 2700° K - 5000° K |
| L1802078 | 19,2W | 24V | 984 | 1200 mm | 2700° K - 5000° K |

COMPLEMENTOS COMPLEMENTS

ILUMINACIÓN

CONTROLADOR REGULADOR TEMPERATURA DE COLOR

DIM CONTROLLER RADIO CONTROLLER

Controlador Radio.
Radio Control.

Controlador WIFI (mediante App*).
Se necesita smartphone o tablet.
WIFI control (*App required).
Smartphone or tablet is needed.

Ambos incluyen controlador 4 salidas.
Debe conectarse entre el transformador y la luz.
4 channel radio telecontrol.
Connection between distributor and luminaire.



| REF. | DESCRIPCIÓN / DESCRIPTION |
|----------|---------------------------|
| L5071078 | RADIO / RADIO CONTROL |
| L4671078 | WIFI |

CONTROLADOR INTENSIDAD LUMÍNICA

DIM CONTROLLER RADIO CONTROLLER

Controlador Radio.
Radio Control.

Controlador WIFI (mediante App*).
Se necesita smartphone o tablet.
WIFI control (*App required).
Smartphone or tablet is needed.

Ambos incluyen controlador 4 salidas.
Debe conectarse entre el transformador y la luz.
4 channel radio telecontrol.
Connection between distributor and luminaire.



| REF. | DESCRIPCIÓN / DESCRIPTION |
|----------|---------------------------|
| L3281078 | RADIO / RADIO CONTROL |
| L4381078 | WIFI |

TRANSFORMADOR LED

LED TRANSFORMER

Transformador con 12 salidas
Enchufe con cable de 2 m.

12 Ways distributor.
2 m. Power supply cable.



| REF. | WATIOS | MEDIDAS / MEASURES |
|----------|--------|--------------------|
| L1371078 | 15 W | 121 x 45 x 17 mm |
| L2471078 | 30 W | 151 x 41 x 31 mm |
| L3571078 | 75 W | 185 x 60 x 31 mm |