



SISTEMAS MODULARES

MODULAR SYSTEMS

COLOMA

128

UNIX

147

DOMINÓ

155

ABP

163

SISTEMA STRUKTURA

165

SISTEMA COLOMA

COLOMA SYSTEM





SISTEMAS
MODULARES









SISTEMAS
MODULARES





CONCEPTO FUNCIONAL

Este tipo de construcción permite crear espacios de gran amplitud visual pudiendo exponer los productos de una manera atractiva y sencilla.

Conjunto de paneles y baldas soportados mediante perfiles ocultos de aluminio atornillados a la pared.

Su diseño permite regular las baldas a la altura deseada gracias a la cremallera que incorporan los perfiles.

Las baldas a utilizar son de 30-40 mm de grosor y los paneles traseros pueden tener un espesor de 10 a 30 mm.

El ancho máximo recomendado por módulo es 1,30 m.

La altura máxima del perfil básico es 2,80 m.

El peso máximo recomendado por balda es 50 kg.

El grosor estándar del panel trasero es 10 mm.

SUMMARY

This system creates a model of visual spaciousness being able to display the products in an alternative and simple way.

A collection of panels and shelves supported by slotted aluminium profiles fixed to the wall that remain completely concealed and permit shelf regulation to the desired height.

The shelves thickness is 30-40 mm. and is intended for backing panel thickness from 10 to 30 mm.

The maximum recommended panel width is 1,30 m.

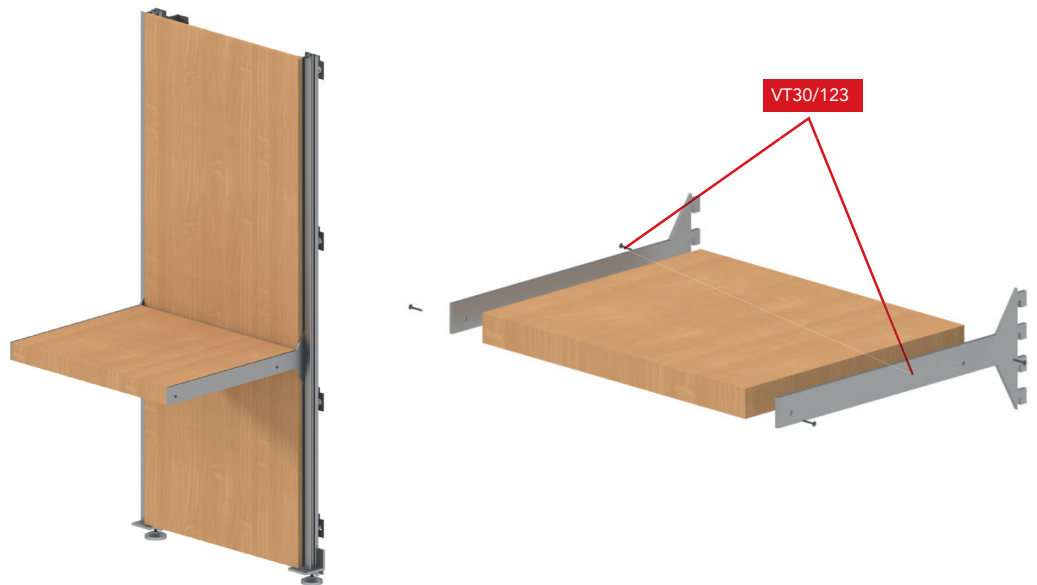
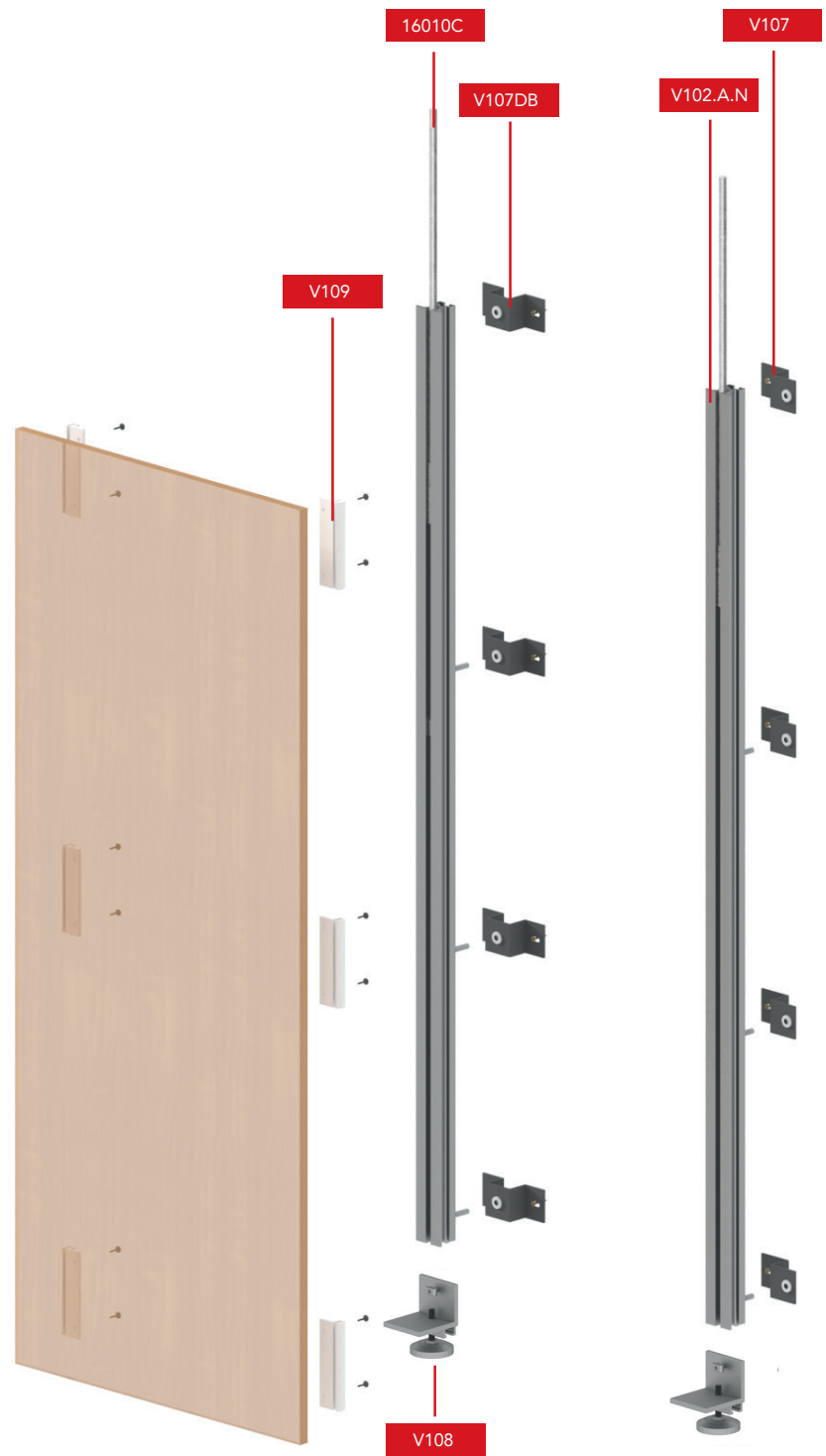
The basic profile maximum height is 2,80 m.

The maximum weight recommended per panel is 50 kg.

The back panel standard thickness is 10 mm.

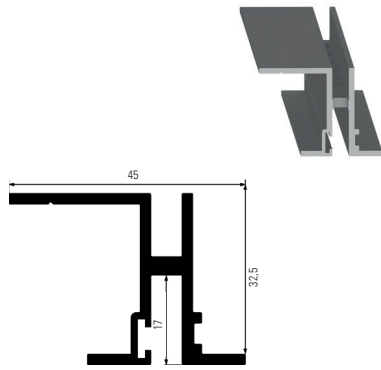
COLOMA

ADINOR



PERFIL BÁSICO V1

SLOTTED BASIC PROFILE

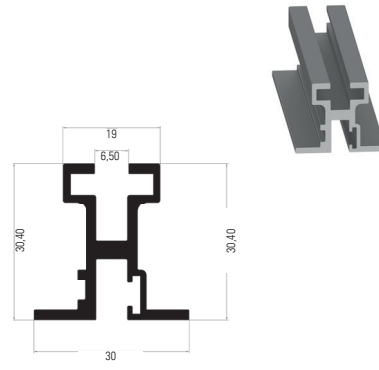


REF.
V100.A.N

Longitud / Length : **2,8 m.**

PERFIL BÁSICO V3

SLOTTED BASIC PROFILE



REF.
V102.A.N

Longitud / Length : **2,8 m.**

Corte profundidad balda / Depth shelf measure:

MODELO PERFIL SLOTTED PROFILE	Espeor panel trasero Backing pannel thickness	Cartela 543 mm Shelf Bracket	Cartela 350 mm Shelf Bracket
V1	10 mm	543 mm	350 mm
	16 mm	537 mm	344 mm
	19 mm	534 mm	341 mm
V3	10 mm	548 mm	355 mm
	16 mm	542 mm	349 mm
	19 mm	539 mm	346 mm

NO VÁLIDO PARA: "CARTELAS PARA ATORNILLAR
MODELO USA"

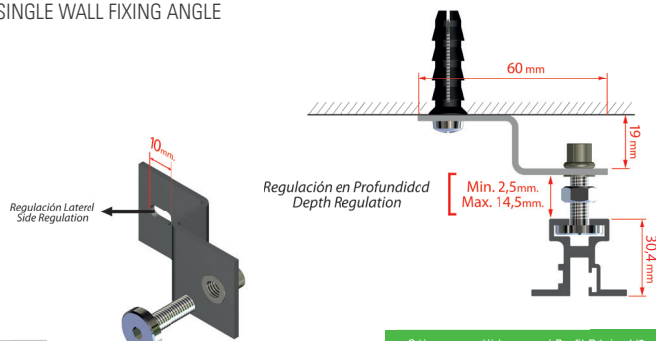
Corte anchura balda / Shelf width measure:

misma anchura que el panel trasero
Same width as backing pannel

COMPONENTES COMPONENTS

SOPORTE FIJACIÓN PARED SIMPLE

SINGLE WALL FIXING ANGLE

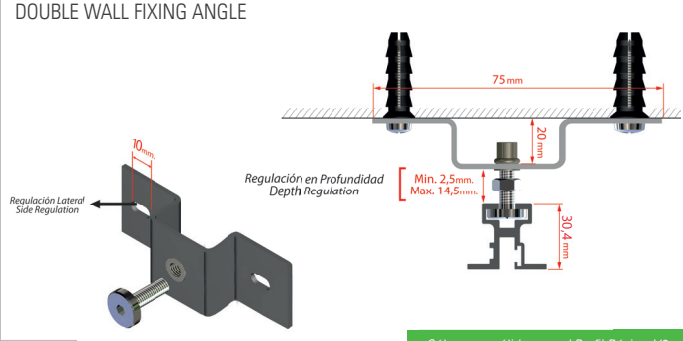


REF.
V107

Sólo válido para el Perfil Básico V3
Only for the slotted, V3 Basic Profile

SOPORTE FIJACIÓN PARED DOBLE

DOUBLE WALL FIXING ANGLE



REF.
V107DB

Sólo válido para el Perfil Básico, V3
Only for the slotted, V3 Basic Profile

PIE REGULABLE

ADJUSTABLE FEET

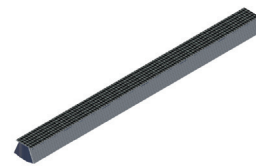


REF.
V108

Sólo válido para el Perfil Básico, V3
Only for the slotted, V3 Basic Profile

CEPILLO 7x10 1P

7x10 BRUSH

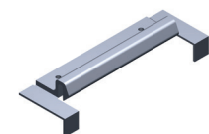


Bolsa / Plastic Bag : **2,8 m.**

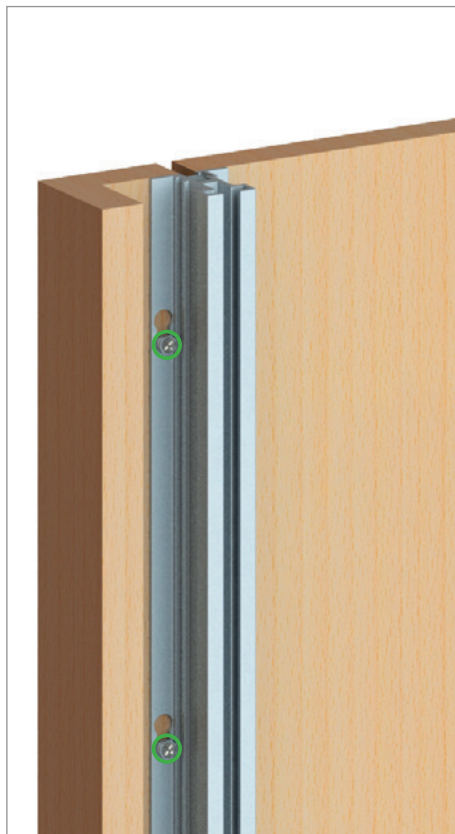
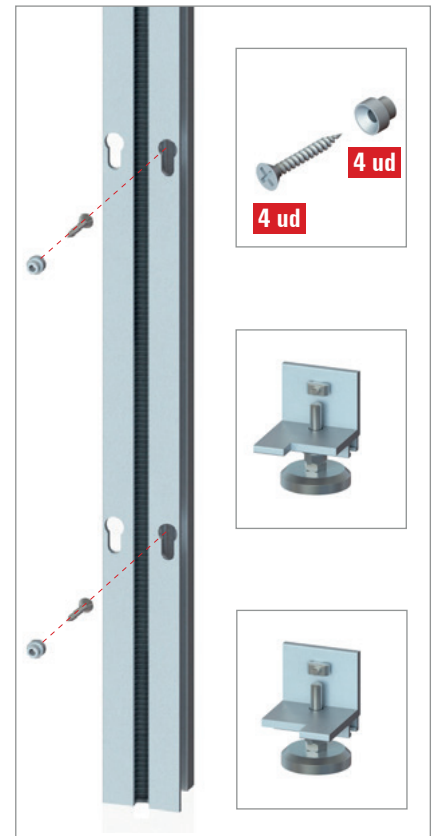
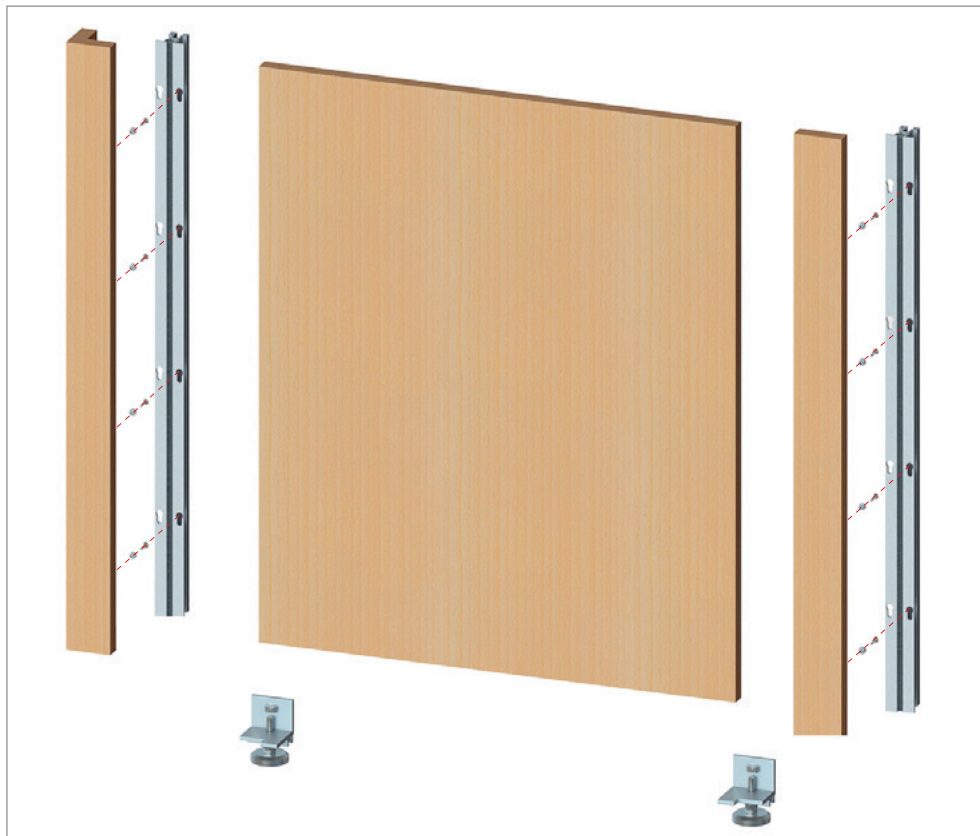
REF.	ACABADO / FINISHING
16010C.K.G	Gris / Grey
16010C.K.B	Blanco / White

CLIP PANELADO

PANEL FIXING PLASTIC PLATE

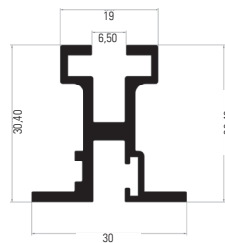


REF.
V109



PERFIL BASICO V3 CON MECANIZADO BOCALLAVE + ANCLAJES CON TIRAFONDO

SLOTTED BASIC PROFILE



2600mm

2300mm

1500mm

900mm

200mm

REF.
V103.A.N

Longitud / Length : 2,8 m

COMPLEMENTOS

COMPLEMENTS

PIE REGULABLE LADO IZQUIERDO

LEFT SWIVELING FOOT



REF.
V108.FIZ

Sólo válido para el Perfil Básico, V3
Only for the slotted, V3 Basic Profile

PIE REGULABLE DERECHO

RIGHT SWIVELING FOOT



REF.
V108.FDCH

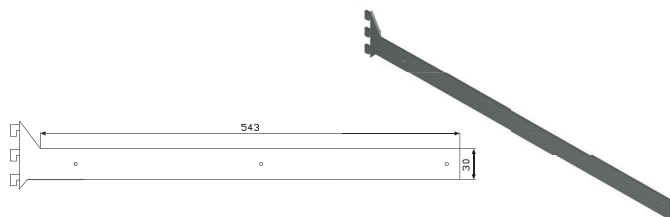
Sólo válido para el Perfil Básico, V3
Only for the slotted, V3 Basic Profile

CARTELAS PARA ATORNILLAR

BRACKETS FOR SCREWS

CARTELA BALDA BAJA 30x543mm. PARA TORNILLOS DER. + IZQ.

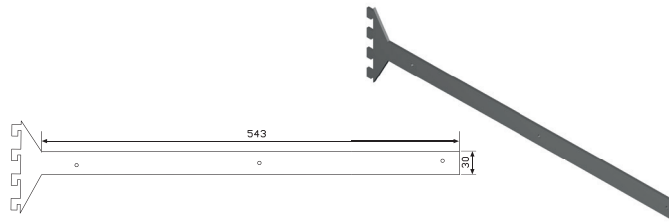
RIGHT AND LEFT 30x543mm. LOWER SHELF BRACKET FOR SCREWS



REF.	ACABADO / FINISHING
VT30/117	Gris / Grey
VT30/117.MK	Moka

CARTELA BALDA INTERMEDIA 30x543mm. PARA TORNILLOS DER.+ IZQ.

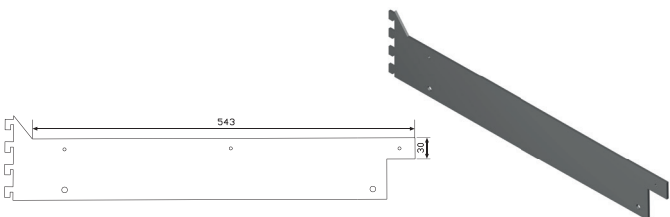
RIGHT AND LEFT 30x543mm. MIDDLE SHELF BRACKET FOR SCREWS



REF.	ACABADO / FINISHING
VT30/123	Gris / Grey
VT30/123.MK	Moka

CARTELA BALDA CAJONERA 30x543mm. PARA TORNILLOS DER. + IZQ.

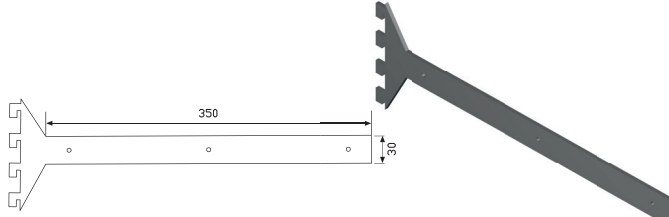
RIGHT AND LEFT 30x543mm. DRAWER SHELF BRACKET FOR SCREWS



REF.	ACABADO / FINISHING
VT30/137	Gris / Grey
VT30/137.MK	Moka

CARTELA BALDA INTERMEDIA 30x350mm. PARA TORNILLOS DER.+ IZQ.

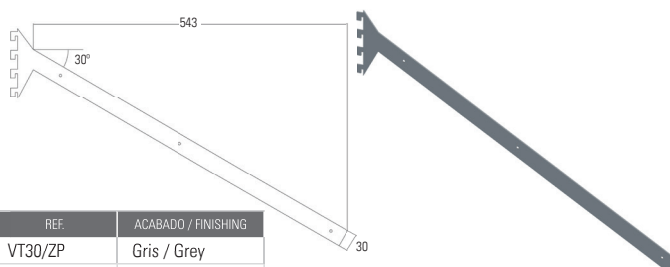
RIGHT AND LEFT 30x350mm. MIDDLE SHELF BRACKET FOR SCREWS



REF.	ACABADO / FINISHING
VT30/122	Gris / Grey
VT30/122.MK	Moka

CARTELA ZAPATERO DER. + IZQ.

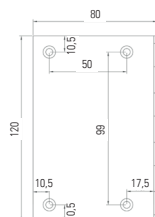
RIGHT AND LEFT SHOE RACK BRACKET SET



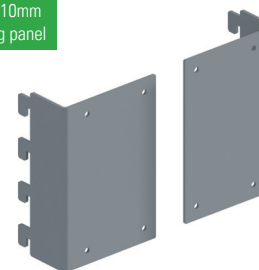
REF.	ACABADO / FINISHING
VT30/ZP	Gris / Grey
VT30/ZP.MK	Moka

CARTELA CAJONERA OCULTA DER. + IZQ.

RIGHT AND LEFT CONCEALED DRAWER BRACKET SET



Panel trasero 10mm
10mm Backing panel



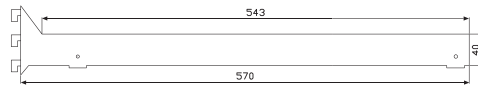
REF.	ACABADO / FINISHING
VT137	Gris / Grey

CARTELAS PARA BALDAS CON MECANIZADO (CLOC)

BRACKETS FOR CLOC MECHANIZED SHELVES

CARTELA BALDA BAJA 40x543mm.

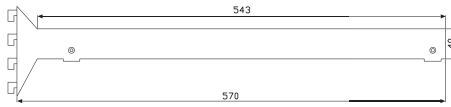
40x543mm. LOWER SHELF BRACKET



REF.
V111 (derecha / right)
V112 (izquierda / left)
V113 (central / center)

CARTELA BALDA INTERMEDIA 40x543mm.

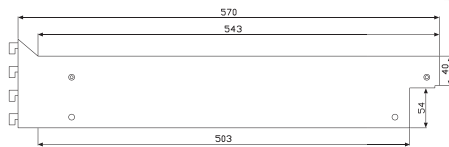
40x543mm. MIDDLE SHELF BRACKET



REF.
V121 (derecha / right)
V122 (izquierda / left)
V123 (central / center)

CARTELA BALDA CAJONERA 40x543mm.

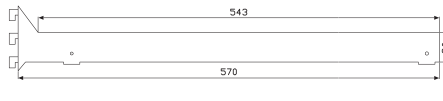
40x543mm. DRAWER SHELF BRACKET



REF.
V131 (derecha / right)
V132 (izquierda / left)
V133 (central / center)

CARTELA BALDA BAJA 30x543mm.

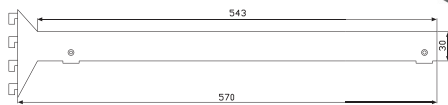
30x543mm. LOWER SHELF BRACKET



REF.
V30/114 (derecha / right)
V30/115 (izquierda / left)
V30/116 (central / center)

CARTELA BALDA INTERMEDIA 30x543mm.

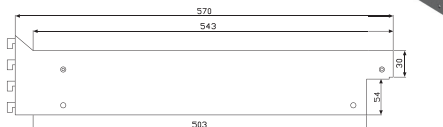
30 x 543mm. MIDDLE SHELF BRACKET



REF.
V30/124 (derecha / right)
V30/125 (izquierda / left)
V30/126 (central / center)

CARTELA BALDA CAJONERA 30x543mm.

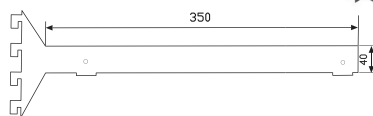
30x543mm. DRAWER SHELF BRACKET



REF.
V30/134 (derecha / right)
V30/135 (izquierda / left)
V30/136 (central / center)

CARTELA BALDA INTERMEDIA 40x350mm.

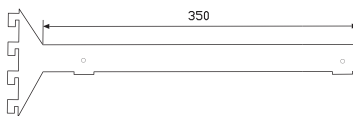
40x350mm. MIDDLE SHELF BRACKET



REF.
V127 (derecha / right)
V128 (izquierda / left)
V129 (central / center)

CARTELA BALDA INTERMEDIA 30x350mm.

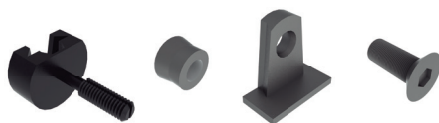
30x350mm. MIDDLE SHELF BRACKET



REF.
V30/127 (derecha / right)
V30/128 (izquierda / left)
V30/129 (central / center)

HERRAJE CARTELA BALDA SIMPLE

SINGLE SHELF MOUNTING ACCESSORIES



REF.
V140

x2

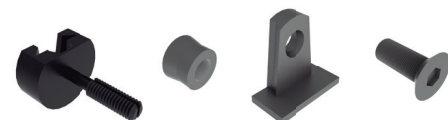
x2

x2

x2

HERRAJE CARTELA BALDA DOBLE

DOUBLE SHELF MOUNTING ACCESSORIES



REF.
V150

x4

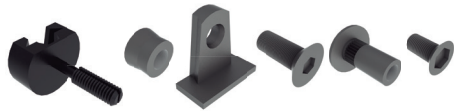
x2

x4

x2

HERRAJE CARTELA CAJONERA SIMPLE

SINGLE DRAWER MOUNTING ACCESSORIES

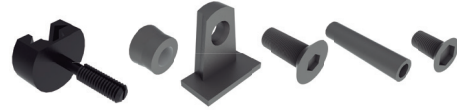


REF.
V160

x2 x2 x2 x2 x2 x2

HERRAJE CARTELA CAJONERA DOBLE

DOUBLE DRAWER MOUNTING ACCESSORIES



REF.
V170

x4 x2 x4 x2 x2 x4

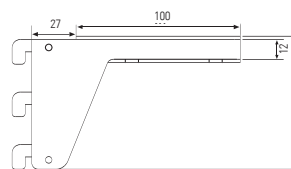
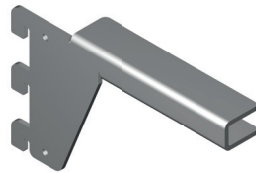
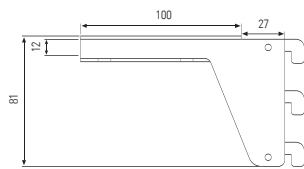
CARTELAS PARA VIDRIO

BRACKETS FOR GLASS

CARTELA VIDRIO IZQUIERDA + DERECHA

RIGHT AND LEFT GLASS SHELF BRACKET SET

Panel trasero 10mm
10mm Backing panel



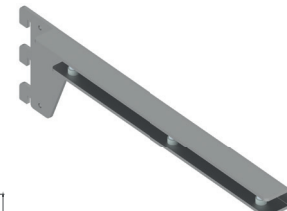
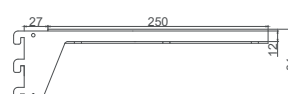
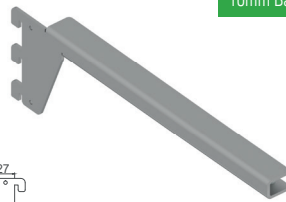
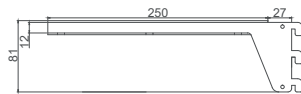
REF. ACABADO / FINISHING
V110C.IZ.DCH Gris / Grey

Para vidrio de 4 a 10mm.
For glass up to 10mm.

CARTELA VIDRIO IZQUIERDA + DERECHA

RIGHT AND LEFT GLASS SHELF BRACKET SET

Panel trasero 10mm
10mm Backing panel



REF. ACABADO / FINISHING
V110C.IZ.DCH.25 Gris / Grey

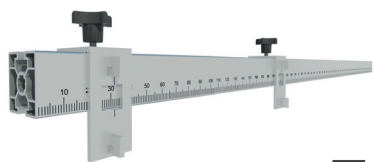
Para vidrio de 4 a 10mm.
For glass up to 10mm.

PLANTILLA MONTAJE COLOMA

COLOMA ASSEMBLY TEMPLATE

PLANTILLA MONTAJE COLOMA

COLOMA ASSEMBLY TEMPLATE



x2

REF.
V180

DESCÁRGATE LAS INSTRUCCIONES COMPLETAS EN:
www.adinor.info/instrucciones-de-montaje
(VIDEO PLANTILLA COLOMA)

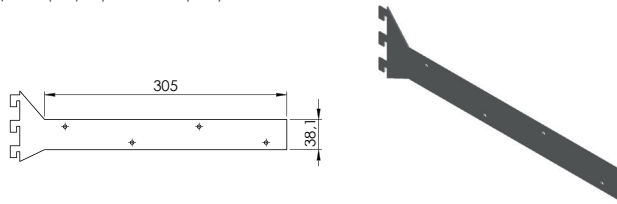
DOWNLOAD THE COMPLETE ASSEMBLY INSTRUCTIONS
www.adinor.info/instrucciones-de-montaje
(COLOMA VIDEO TEMPLATE)

CARTELAS PARA ATORNILLAR (modelo USA)

BRACKETS FOR SCREWS (USA model)

CARTELA BALDA BAJA 38,1 mm (1 1/2") x 305 mm (12")

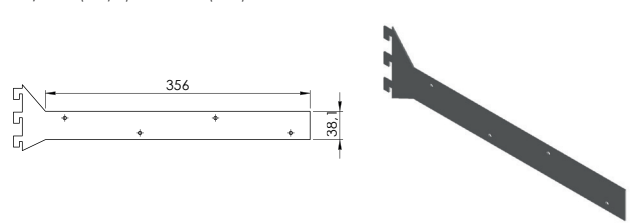
38,1mm (1 1/2") x 305mm (12") LOWER SHELF BRACKET



ACABADOS	FINISHES	REF.
Gris	Grey	HVT11/2.B.12.G
Moka	Moka	HVT11/2.B.12.M

CARTELA BALDA BAJA 38,1 mm (1 1/2") x 356 mm (14")

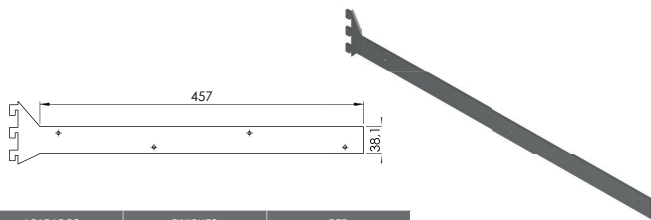
38,1mm (1 1/2") x 356mm (14"). LOWER SHELF BRACKET



ACABADOS	FINISHES	REF.
Gris	Grey	HVT11/2.B.14.G
Moka	Moka	HVT11/2.B.14.M

CARTELA BALDA BAJA 38,1 mm (1 1/2") x 457 mm (18")

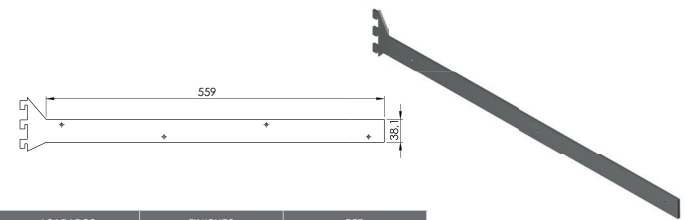
38,1mm (1 1/2") x 457mm (18") LOWER SHELF BRACKET



ACABADOS	FINISHES	REF.
Gris	Grey	HVT11/2.B.18.G
Moka	Moka	HVT11/2.B.18.M

CARTELA BALDA BAJA 38,1 mm (1 1/2") x 559 mm (22")

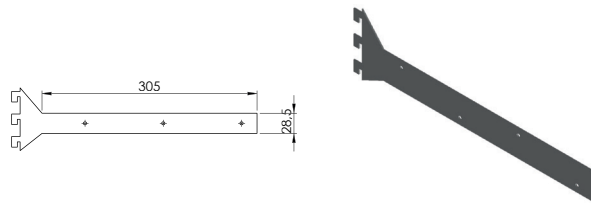
38,1 mm (1 1/2") x 559 mm (22"). LOWER SHELF BRACKET



ACABADOS	FINISHES	REF.
Gris	Grey	HVT11/2.B.22.G
Moka	Moka	HVT11/2.B.22.M

CARTELA BALDA BAJA 28,5 mm (1 1/8") x 305 mm (12")

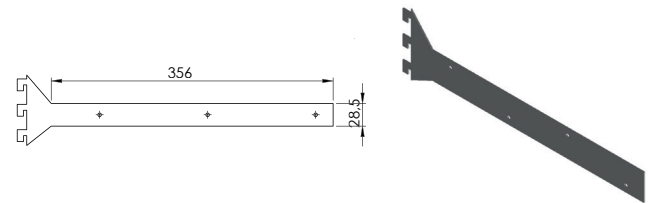
28,5 mm (1 1/8") x 305 mm (12"). LOWER SHELF BRACKET



ACABADOS	FINISHES	REF.
Gris	Grey	HVT11/8.B.12.G
Moka	Moka	HVT11/8.B.12.M

CARTELA BALDA BAJA 28,5 mm (1 1/8") x 356 mm (14")

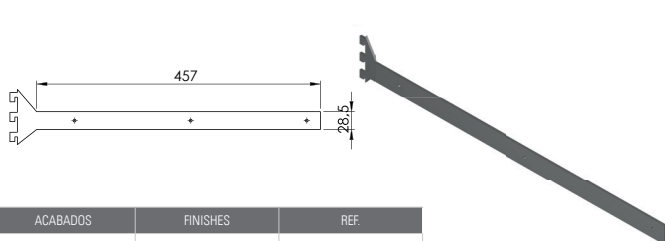
28,5 mm (1 1/8") x 356 mm (14") LOWER SHELF BRACKET



ACABADOS	FINISHES	REF.
Gris	Grey	HVT11/8.B.14.G
Moka	Moka	HVT11/8.B.14.M

CARTELA BALDA BAJA 28,5 mm (1 1/8") x 457 mm (18")

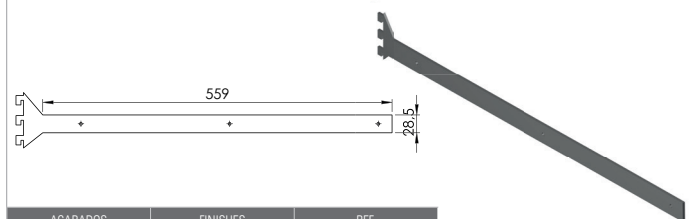
28,5 mm (1 1/8") x 457 mm (18") LOWER SHELF BRACKET



ACABADOS	FINISHES	REF.
Gris	Grey	HVT11/8.B.18.G
Moka	Moka	HVT11/8.B.18.M

CARTELA BALDA BAJA 28,5 mm (1 1/8") x 559 mm (22")

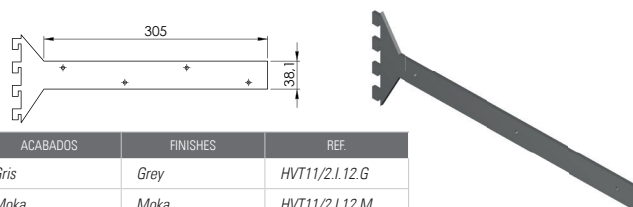
28,5 mm (1 1/8") x 559 mm (22") LOWER SHELF BRACKET



ACABADOS	FINISHES	REF.
Gris	Grey	HVT11/8.B.22.G
Moka	Moka	HVT11/8.B.22.M

CARTELA BALDA INTERMEDIA 38,1 mm (1 1/2") x 305 mm (12")

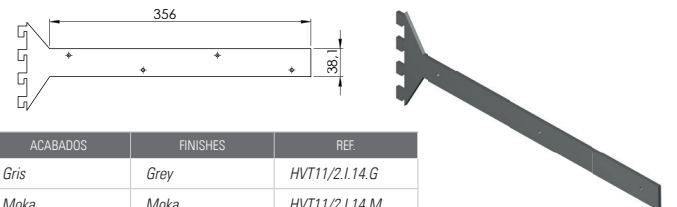
38,1 mm (1 1/2") x 305 mm (12") MIDDLE SHELF BRACKET



ACABADOS	FINISHES	REF.
Gris	Grey	HVT11/2.I.12.G
Moka	Moka	HVT11/2.I.12.M

CARTELA BALDA INTERMEDIA 38,1 mm (1 1/2") x 356 mm (14")

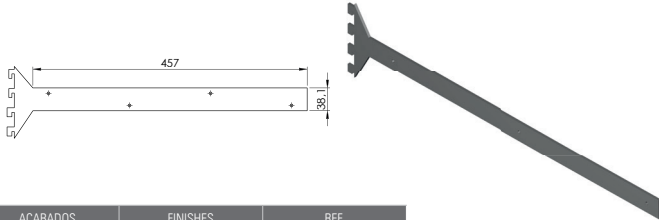
38,1 mm (1 1/2") x 356 mm (14") MIDDLE SHELF BRACKET



ACABADOS	FINISHES	REF.
Gris	Grey	HVT11/2.I.14.G
Moka	Moka	HVT11/2.I.14.M

CARTELA BALDA INTERMEDIA 38,1 mm (1 1/2") x 457 mm (18")

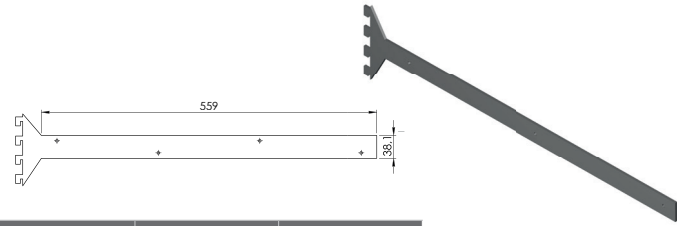
38,1 mm (1 1/2") x 457 mm (18") MIDDLE SHELF BRACKET



ACABADOS	FINISHES	REF.
Gris	Grey	HVT11/2.I.18.G
Moka	Moka	HVT11/2.I.18.M

CARTELA BALDA INTERMEDIA 38,1 mm (1 1/2") x 559 mm (22")

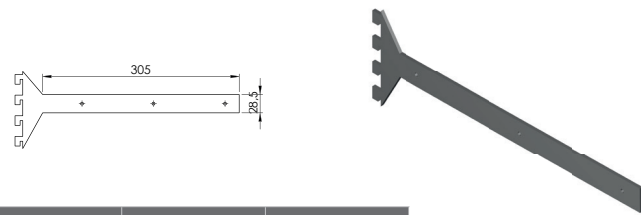
38,1 mm (1 1/2") x 559 mm (22") MIDDLE SHELF BRACKET



ACABADOS	FINISHES	REF.
Gris	Grey	HVT11/2.I.22.G
Moka	Moka	HVT11/2.I.22.M

CARTELA BALDA INTERMEDIA 28,5 mm (1 1/8") x 305 mm (12")

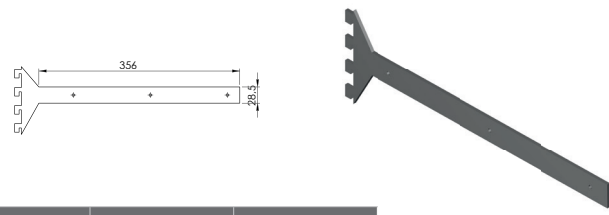
28,5 mm (1 1/8") x 305 mm (12") MIDDLE SHELF BRACKET



ACABADOS	FINISHES	REF.
Gris	Grey	HVT11/8.I.12.G
Moka	Moka	HVT11/8.I.12.M

CARTELA BALDA INTERMEDIA 28,5 mm (1 1/8") x 356 mm (14")

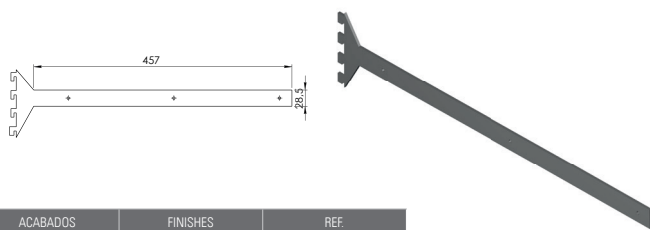
28,5 mm (1 1/8") x 356 mm (14") MIDDLE SHELF BRACKET



ACABADOS	FINISHES	REF.
Gris	Grey	HVT11/8.I.14.G
Moka	Moka	HVT11/8.I.14.M

CARTELA BALDA INTERMEDIA 28,5 mm (1 1/8") x 457 mm (18")

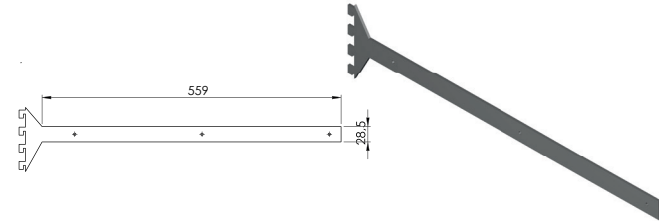
28,5 mm (1 1/8") x 457 mm (18"). MIDDLE SHELF BRACKET



ACABADOS	FINISHES	REF.
Gris	Grey	HVT11/8.I.18.G
Moka	Moka	HVT11/8.I.18.M

CARTELA BALDA INTERMEDIA 28,5 mm (1 1/8") x 559 mm (22")

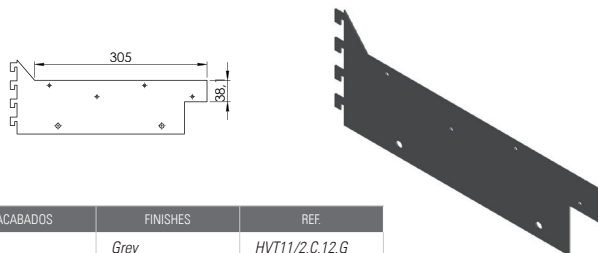
28,5 mm (1 1/8") x 559 mm (22"). MIDDLE SHELF BRACKET



ACABADOS	FINISHES	REF.
Gris	Grey	HVT11/8.I.22.G
Moka	Moka	HVT11/8.I.22.M

CARTELA BALDA CAJONERA 38,1 mm (1 1/2") x 305 mm (12")

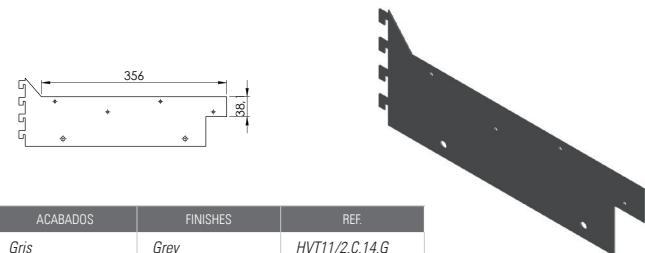
38,1 mm (1 1/2") x 305 mm (12"). DRAWER SHELF BRACKET



ACABADOS	FINISHES	REF.
Gris	Grey	HVT11/2.C.12.G
Moka	Moka	HVT11/2.C.12.M

CARTELA BALDA CAJONERA 38,1 mm (1 1/2") x 356 mm (14")

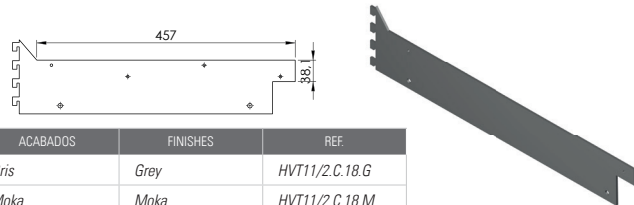
38,1 mm (1 1/2") x 356 mm (14"). DRAWER SHELF BRACKET



ACABADOS	FINISHES	REF.
Gris	Grey	HVT11/2.C.14.G
Moka	Moka	HVT11/2.C.14.M

CARTELA BALDA CAJONERA 38,1 mm (1 1/2") x 457 mm (18")

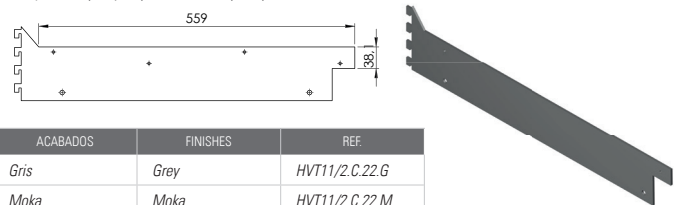
38,1 mm (1 1/2") x 457 mm (18"). DRAWER SHELF BRACKET



ACABADOS	FINISHES	REF.
Gris	Grey	HVT11/2.C.18.G
Moka	Moka	HVT11/2.C.18.M

CARTELA BALDA CAJONERA 38,1 mm (1 1/2") x 559 mm (22")

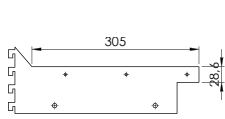
38,1 mm (1 1/2") x 559 mm (22"). DRAWER SHELF BRACKET



ACABADOS	FINISHES	REF.
Gris	Grey	HVT11/2.C.22.G
Moka	Moka	HVT11/2.C.22.M

CARTELA BALDA CAJONERA 28,5 mm (1 1/8") x 305 mm (12")

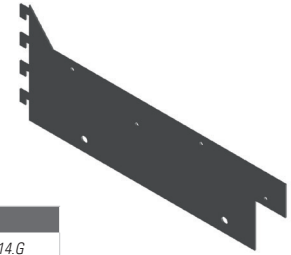
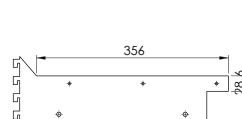
28,5 mm (1 1/8") x 305 mm (12") DRAWER SHELF BRACKET



ACABADOS	FINISHES	REF.
Gris	Grey	HVT11/8.C.12.G
Moka	Moka	HVT11/8.C.12.M

CARTELA BALDA CAJONERA 28,5 mm (1 1/8") x 356 mm (14")

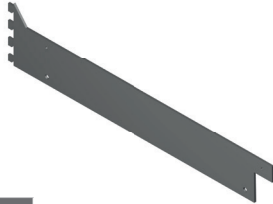
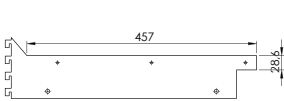
28,5 mm (1 1/8") x 356 mm (14") DRAWER SHELF BRACKET



ACABADOS	FINISHES	REF.
Gris	Grey	HVT11/8.C.14.G
Moka	Moka	HVT11/8.C.14.M

CARTELA BALDA CAJONERA 28,5 mm (1 1/8") x 457 mm (18")

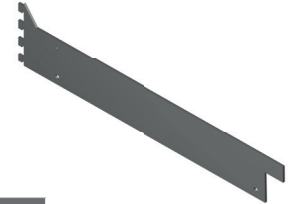
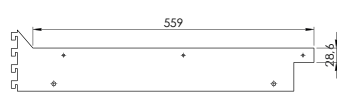
28,5 mm (1 1/8") x 457 mm (18") DRAWER SHELF BRACKET



ACABADOS	FINISHES	REF.
Gris	Grey	HVT11/8.C.18.G
Moka	Moka	HVT11/8.C.18.M

CARTELA BALDA CAJONERA 28,5 mm (1 1/8") x 559 mm (22")

28,5 mm (1 1/8") x 559 mm (22") DRAWER SHELF BRACKET

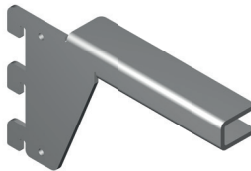
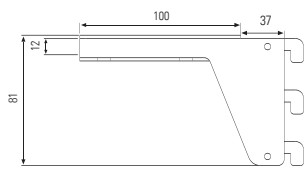


ACABADOS	FINISHES	REF.
Gris	Grey	HVT11/8.C.22.G
Moka	Moka	HVT11/8.C.22.M

CARTELA VIDRIO IZQUIERDA + DERECHA

RIGHT AND LEFT GLASS SHELF BRACKET SET

Panel trasero 19mm
19mm Backing panel

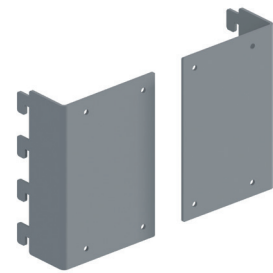
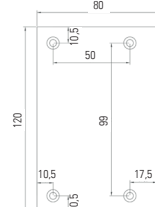


REF.	ACABADO / FINISHING
HVT110KIT.CV.G	Gris / Grey

CARTELA CAJONERA OCULTA DER. + IZO.

RIGHT AND LEFT CONCEALED DRAWER BRACKET SET

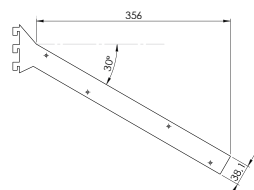
Panel trasero 19mm
19mm Backing panel



REF.	ACABADO / FINISHING
HVT.CO.G	Gris / Grey
HVT.CO.M	Moka/Moka

CARTELA BALDA INCLINADA 38,1 mm (1 1/2") x 356 mm (14")

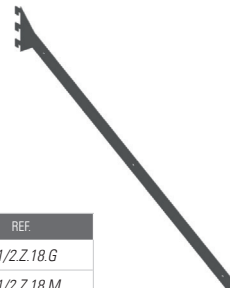
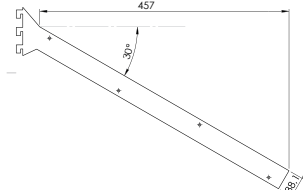
38,1 mm (1 1/2") x 356 mm (14") 30° SHELF BRACKET



ACABADOS	FINISHES	REF.
Gris	Grey	HVT11/2.Z.14.G
Moka	Moka	HVT11/2.Z.14.M

CARTELA BALDA INCLINADA 38,1 mm (1 1/2") x 457 mm (18")

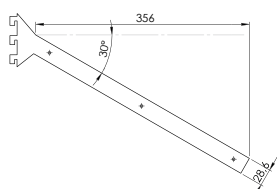
38,1 mm (1 1/2") x 457 mm (18") 30° SHELF BRACKET



ACABADOS	FINISHES	REF.
Gris	Grey	HVT11/2.Z.18.G
Moka	Moka	HVT11/2.Z.18.M

CARTELA BALDA INCLINADA 28,5 mm (1 1/8") x 356 mm (14")

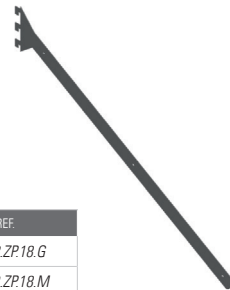
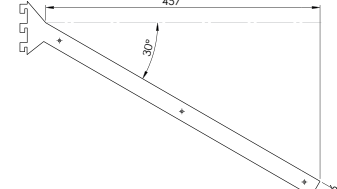
28,5 mm (1 1/8") x 356 mm (14") 30° SHELF BRACKET



ACABADOS	FINISHES	REF.
Gris	Grey	HVT11/8.Z.14.G
Moka	Moka	HVT11/8.Z.14.M

CARTELA BALDA INCLINADA 28,5 mm (1 1/8") x 457 mm (18")

28,5 mm (1 1/8") x 457 mm (18") 30° SHELF BRACKET



ACABADOS	FINISHES	REF.
Gris	Grey	HVT11/8.ZP.18.G
Moka	Moka	HVT11/8.ZP.18.M

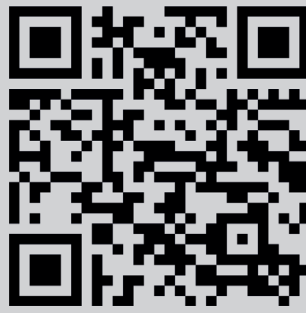
COLOMA

INSTRUCCIONES DE MONTAJE

ASSEMBLY INSTRUCTIONS

ADINOR

ESCANÉALO!
SCAN IT!

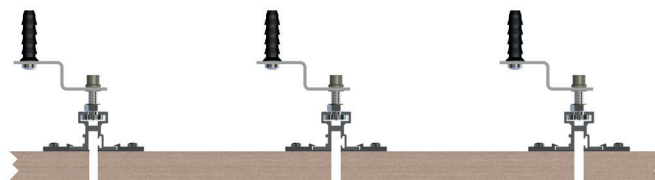
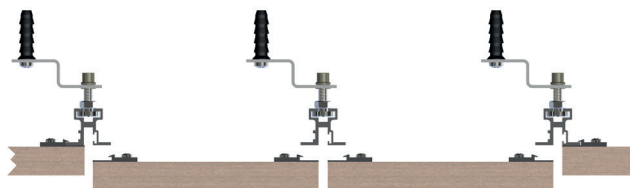
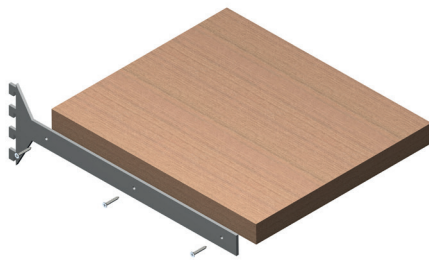
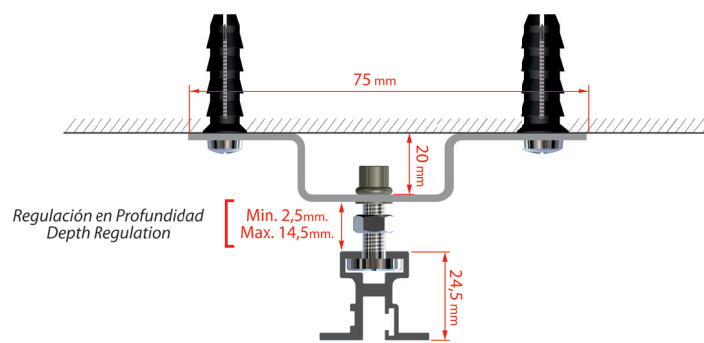
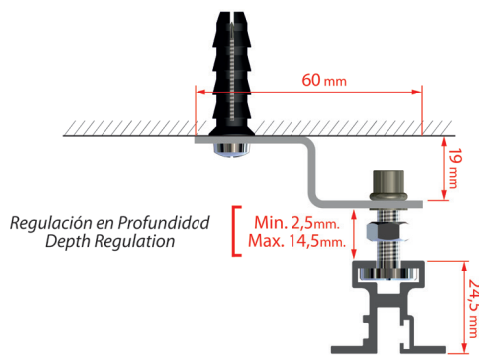


VIDEO INSTRUCCIONES DE MONTAJE
ASSEMBLY INSTRUCTIONS VIDEO

DESCÁRGATE LAS INSTRUCCIONES COMPLETAS EN:
www.adinor.info/instrucciones-de-montaje
(VIDEO SISTEMA COLOMA)
DOWNLOAD THE COMPLETE INSTRUCTIONS

SISTEMAS MODULARES

MONTAJE SISTEMA SIN MECANIZADO NONE MECHANIZED SYSTEM ASSEMBLY

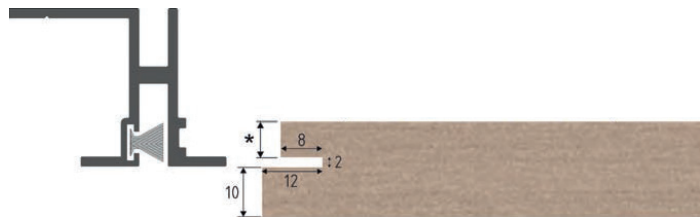


MONTAJE SISTEMA MECANIZADO

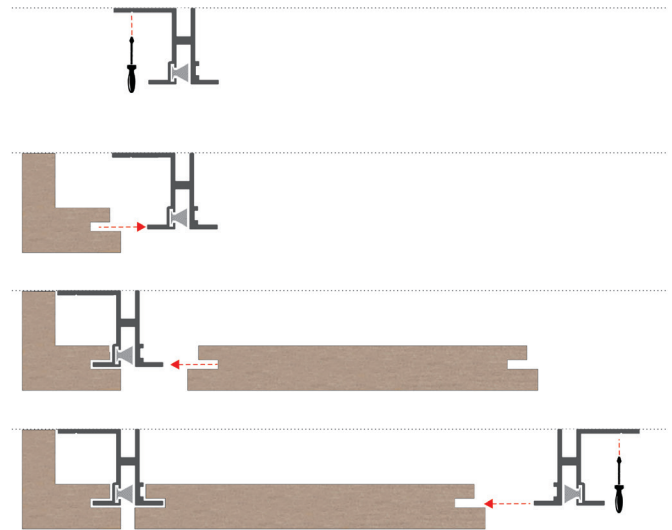
MECHANIZED SYSTEM ASSEMBLY

MECANIZADO PANEL TRASERO

BACKING PANEL ASSEMBLY

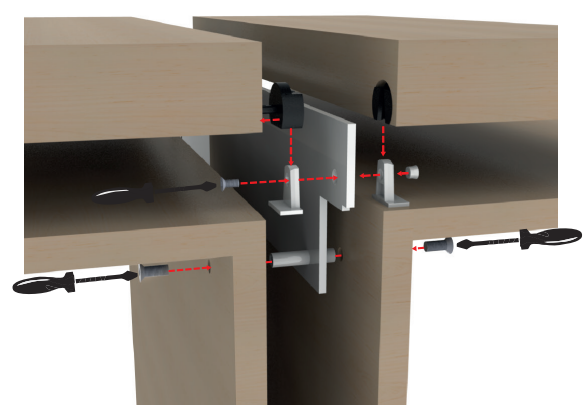
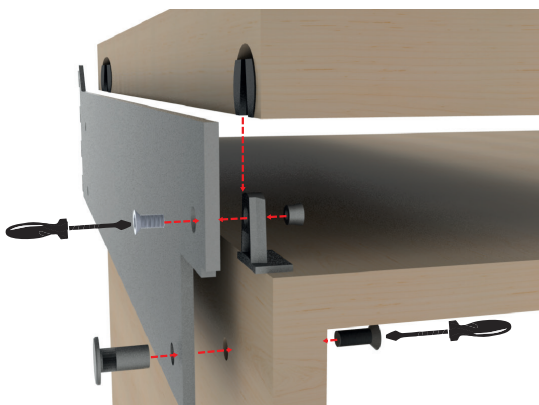
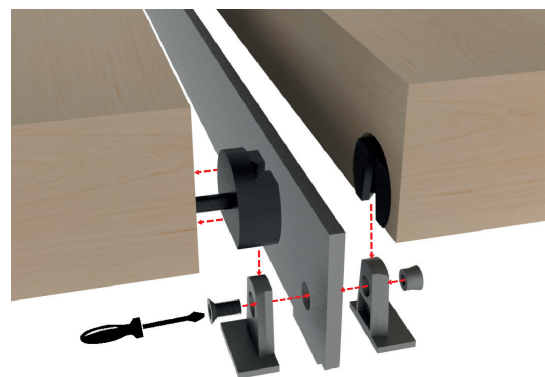
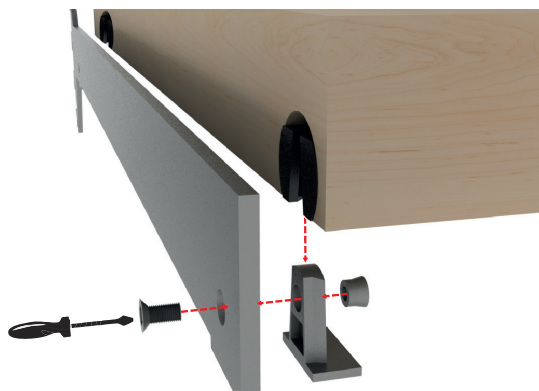
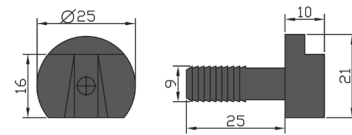
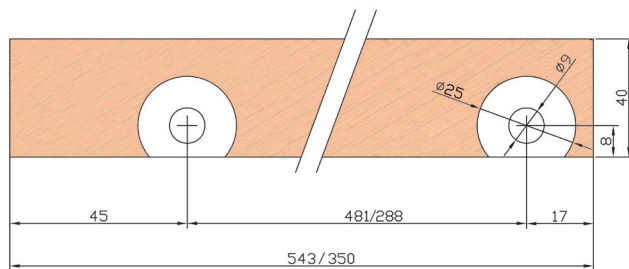


*Según grosor panel
Depends on the panel thickness



MECANIZADO BALDAS

SHELF ASSEMBLY



SISTEMA UNIX UNIX SYSTEM

SISTEMAS
MODULARES









CONCEPTO FUNCIONAL

De gran versatilidad, permite dos tipos de construcciones:
Suelo-Techo ó *Suelo-Pared*

A diferencia de los diseños tradicionales de módulos con costados de madera, este sistema permite una visión global de todos los artículos que se expongan.

La perfilera vertical de aluminio tiene el canal longitudinal en la cara trasera, las tuercas quedan ocultas a la vista y los soportes de la balda poco visibles. Las baldas pueden ser reguladas a la altura deseada.

Las cartelas permiten utilizar baldas para madera o vidrio, pudiendo inclinarse hasta 38°.

Este sistema nos permite recubrir el perfil con los mismos acabados que las baldas creando una integración total entre ambos.

SUMMARY

This system has a great versatility. It permits two types of assembly:

From floor to ceiling or *From floor to wall*

There is a difference with traditional designs, which are manufactured with wooden sides, Unix allows a quick overall view of all the exposed articles.

The vertical aluminium profile has a longitudinal slot on the rear face, the nuts are hidden from view and the shelf supports are barely visible. The shelves can be fixed at any height.

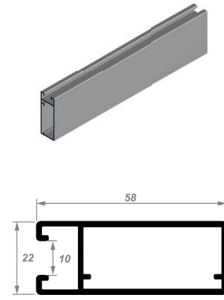
The shelf's brackets allow the use of wooden or glassy material and are able to lean 38°.

This system allows wrapping the profile with the same finishings as the shelves making a complete integration on both elements.

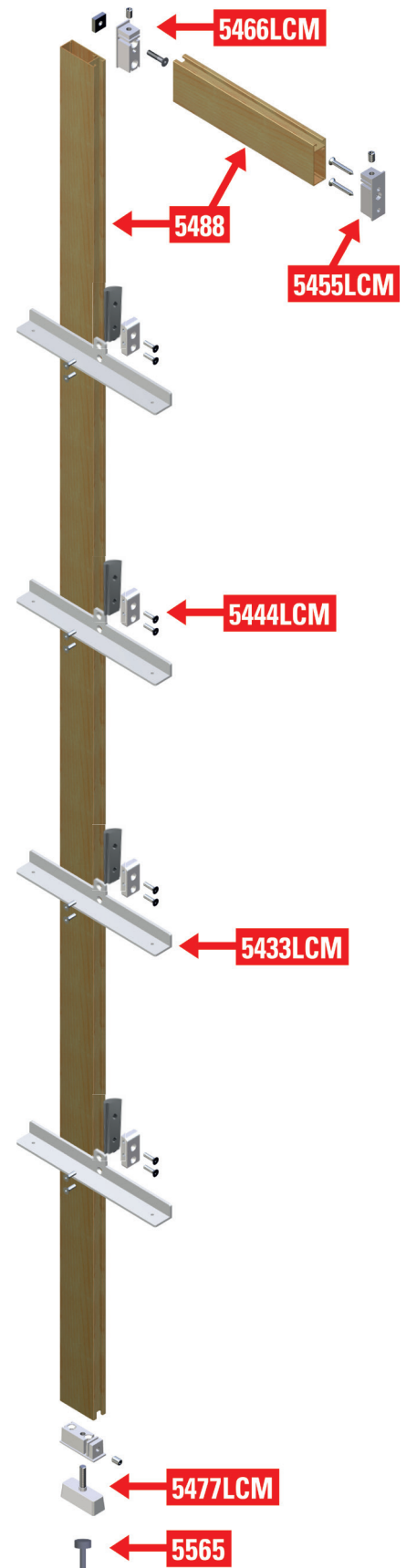
UNIX

ADINOR

UNIX
VERTICAL UNIX
 UNIX VERTICAL PROFILE



ACABADOS	FINISHINGS	Longitud / Length : 2,7 m.
LACADOS	COATED	REF.
Blanco Mate Ral 9010	Mat White	5488.L.BM
Negro Mate Ral 9011	Mat Black	5488.L.NM
Antracita	Anthracite	5488.L.ANT
ANODIZADOS	ANODIZED	REF.
Plata Mate	Natural Anodized	5488.A.PM
MELAMINA	MELAMINE	REF.
Roble RO 444	Oak	5488.M.RBRO
Textil Coral	Textil	5488.M.TXCO
Sapely D2517	Sapely	5488.M.SPD
Haya Vapor. 428	Steam Beech	5488.M.YV
Blanco Rebornizable	White	5488.M.MR
MADERA	NATURAL WOOD	REF.
Roble Francés	Oak	5488.C.RB
Sapely	Sapely	5488.C.SP
Cerezo	Cherry Tree	5488.C.CZ
Pino	Pine	5488.C.PN
Haya Blanca	Beech Tree	5488.C.Y
VINILO	VINYL	REF.
Blanco RAL 9003	Blanco RAL 9003	5488.V.9003



COMPONENTES

COMPONENTS

SUPLEMENTO PIE

FIXING NAIL FOR ADJUSTABLE FEET

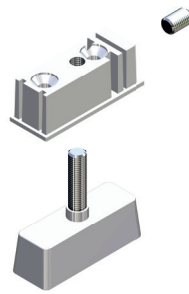


REF.

5565

PIE REGULABLE + UNIÓN PERFIL UNIX

ADJUSTABLE FEET

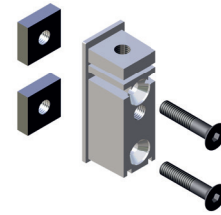


REF.

5477.L.CM (cromo mate)

CONECTOR ANGULO RECTO UNIX

UNIX CONNECTION ANGLE

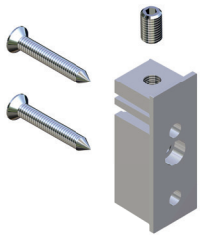


REF.

5466.L.CM (cromo mate)

SOPORTE FIJACIÓN PARED SISTEMA UNIX

UNIX WALL FIXING PLATE



REF.

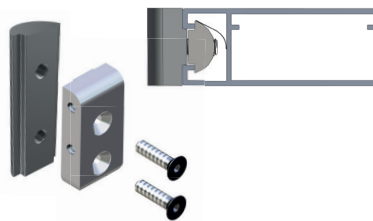
5455.L.CM (cromo mate)

NO INCLUYE / NO INCLUDED

Tornillo / Screw

SOPORTE BALDA PARA MADERA UNIX

SHELF SUPPORT

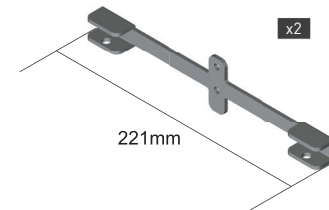


REF.

5444.L.CM (cromo mate)

CARTELA PARA VIDRIO

GLASS PANEL BRACKET



REF.

5434.2.L.PM

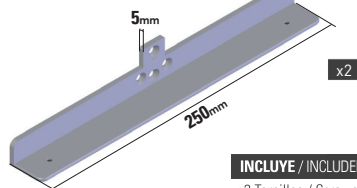
INCLUYE / INCLUDED

+2 Tornillos / Screws

CARTELA ALUMINIO PARA MADERA INCL38°

ALUMINIUM WOOD PANEL BRACKET 38°

Inclinable 38°
38° Tilttable



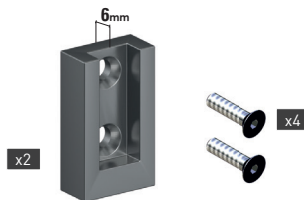
INCLUYE / INCLUDED

+2 Tornillos / Screws

ACABADOS	FINISHINGS	REF.
Blanco Mate	Mat White	5433.2.L.BM
Negro Mate	Mat Black	5433.2.L.NM
Plata Mate	Natural Anodized	5433.2.L.PM

CONJUNTO SOPORTE LATERAL RECTANGULAR

RECTANGULAR LATERAL SUPORT



ACABADOS	FINISHINGS	REF.
Blanco Mate	Mat White	51954BM
Negro Mate	Mat Black	51954NM
Plata Mate	Natural Anodized	51954PM
Moka	Moka	51954MK
Antracita	Anthracite	51954ANT

INSTRUCCIONES DE MONTAJE

ASSEMBLY INSTRUCTIONS

DESCÁRGATE LAS INSTRUCCIONES COMPLETAS EN:
www.adinor.info/instrucciones-de-montaje
 (Instrucciones montaje SISTEMA UNIX)

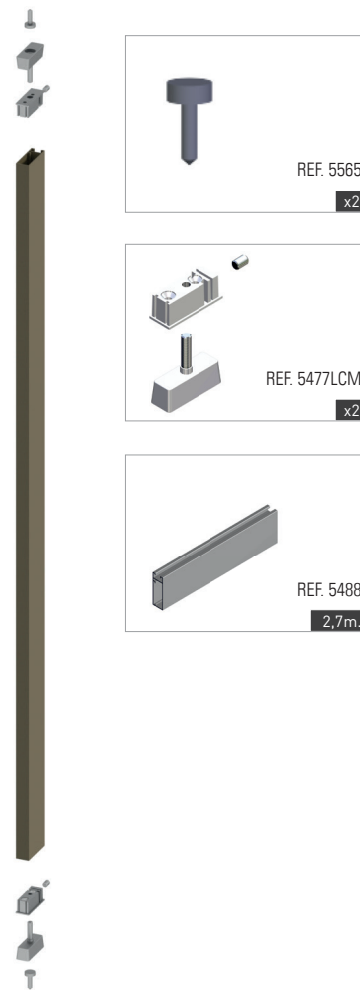
DOWNLOAD THE COMPLETE ASSEMBLY INSTRUCTIONS
www.adinor.info/instrucciones-de-montaje

UNIX

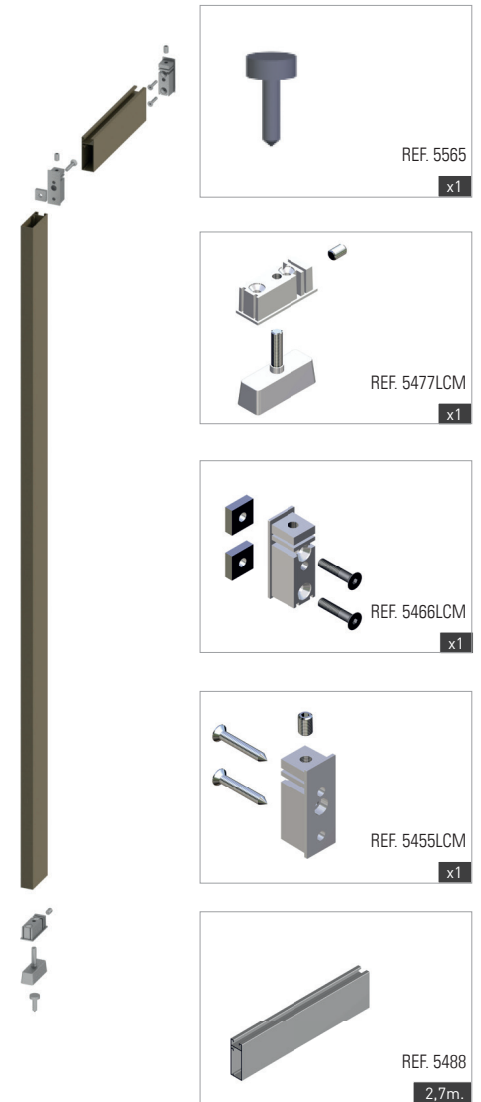
KITS SETS

ADINOR

KIT SUELO-TECHO FLOOR-CEILING SET



KIT SUELO-PARED FLOOR-WALL SET



ACABADOS	FINISHINGS	REF.	REF.
LACADOS	COATED	REF.	REF.
Blanco Mate Ral 9010	Mat White	5910.L.BM	5920.L.BM
Negro Mate Ral 9011	Mat Black	5910.L.NM	5920.L.NM
Antracita	Anthracite	5910.L.ANT	5920.L.ANT
ANODIZADOS	ANODIZED	REF.	REF.
Plata Mate	Natural Anodized	5910.A.PM	5920.A.PM
MELAMINA	MELAMINE	REF.	REF.
Roble RO 444	Oak	5910.M.RBRO	5920.M.RBRO
Textil Coral	Textil	5910.M.TXCO	5920.M.TXCO
Sapely D2517	Sapely	5910.M.SPD	5920.M.SPD
Haya Vapor. 428	Steam Beech	5910.M.YV	5920.M.YV
Blanco Rebornizable	White	5910.M.MR	5920.M.MR
MADERA	NATURAL WOOD	REF.	REF.
Roble Francés	Oak	5910.C.RB	5920.C.RB
Sapely	Sapely	5910.C.SP	5920.C.SP
Cerezo	Cherry Tree	5910.C.CZ	5920.C.CZ
Pino	Pine	5910.C.PN	5920.C.PN
Haya Blanca	Beech Tree	5910.C.Y	5920.C.Y
VINILO	VINYL	REF.	REF.
Blanco RAL 9003	Blanco RAL 9003	5910.V.9003	5920.V.9003

SISTEMA DOMINÓ

DOMINÓ SYSTEM

SISTEMAS
MODULARES











CONCEPTO FUNCIONAL

De gran versatilidad, permite dos tipos de construcciones:
Suelo-Techo ó Suelo-Pared

A diferencia de los diseños tradicionales de módulos con costados de madera, este sistema permite una visión global de todos los artículos que se expongan.

Gracias a la perfilera de aluminio con canal lateral y a las tuercas cabeza martillo, las baldas pueden ser reguladas a la altura deseada.

Las cartelas permiten utilizar baldas para madera o vidrio, pudiendo inclinarse hasta 38°.

SUMMARY

This system has a great versatility. It permits two types of assembly:

From floor to ceiling or From floor to wall

There is a difference with traditional designs, which are manufactured with wooden sides, Domino allows a quick overall view of all the exposed articles.

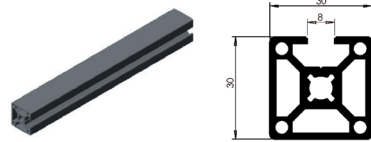
Thanks to the aluminium profiles having a lateral slot and the use of hammer head nuts the shelves can be fixed at any height. The shelf's brackets allow the use of wooden or glassy material and are able to lean 38°.

DOMINÓ

ADINOR

PERFIL 1 SALIDA

PROFILE 1 SLOT

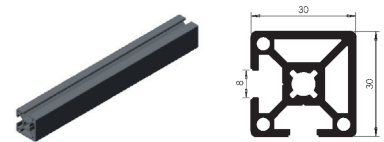


REF.
5027.A.PM

Longitud / Length : 3 m.

PERFIL 2 SALIDAS 90°

PROFILE 2 SLOTS

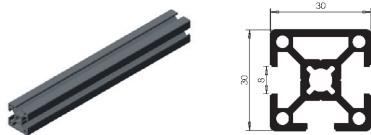


REF.
5028.A.PM

Longitud / Length : 3 m.

PERFIL 3 SALIDAS

PROFILE 3 SLOTS

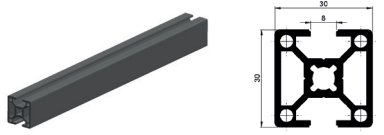


REF.
5029.A.PM

Longitud / Length : 3 m.

PERFIL 2 SALIDAS

PROFILE 2 SLOTS

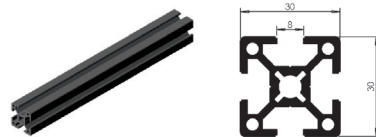


REF.
5025.A.PM

Longitud / Length : 3 m.

PERFIL 4 SALIDAS

PROFILE 4 SLOTS

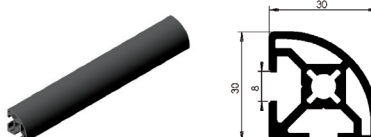


REF.
5010.A.PM

Longitud / Length : 3 m.

PERFIL MEDIA CAÑA

MC-30 PROFILE



REF.
5017.A.PM

Longitud / Length : 3 m.

TAPACANAL

GROOVE COVER PROFILE



REF.
5101301

Longitud / Length : 3 m.

PIE DE ACERO DIÁMETRO 35mm.

ADJUSTABLE FEET Ø 35mm.



REF.
5564

SUPLEMENTO PIE

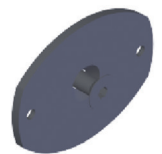
FIXING NAIL FOR ADJUSTABLE FEET



REF.
5565

SOPORTE FIJACIÓN PARED

WALL FIXING PLATE

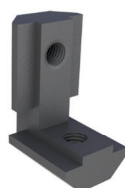


REF.
5566

INCLUYE / INCLUDES
Tornillo/Screw

ESCUADRA INTERIOR - EXTERIOR

CONNECTION ANGLE



REF.
537830

TAPETA CUADRANGULAR

END COVERS



REF.
5508 (negro / black)
55081 (gris / grey)

TAPETA MEDIA CAÑA

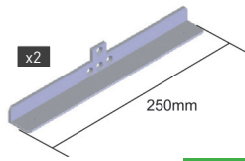
END COVERS



REF.
55010 (negro / black)
550101 (gris / grey)

CARTELA ALUMINIO PARA MADERA

ALUMINIUM WOOD PANEL BRACKET



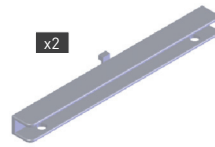
Inclinable 38°
38° Tilttable

INCLUYE / INCLUDES
+4 Tornillos / Screws
+ Tuercas / Nuts

REF.
5560.2.M

CARTELA ALUMINIO PARA VIDRIO

ALUMINIUM GLASS PANEL BRACKET



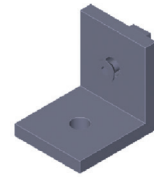
Vidrio 0 - 10 mm.
Glass 0 - 10 mm.

INCLUYE / INCLUDES
+2 Tornillo / Screw
+2 Tuerca / Nut

REF.
5561.2.M

ESCUADRA 40x40x35x4

CONNECTION ANGLE 40x40x35x4



INCLUYE / INCLUDES
+1 Tornillo / Screw
+1 Tuerca / Nut

REF.
5563

SOPORTE LATERAL ALUMINIO

SIDE TUBE HANGER

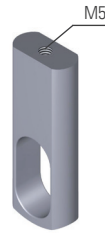


NO INCLUYE TORNILLO
SCREW IS NOT INCLUDED

REF.
1952

SOPORTE CENTRAL ALUMINIO

CENTRAL TUBE HANGER

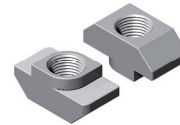


NO INCLUYE TORNILLO
SCREW IS NOT INCLUDED

REF.
1953

TUERCA CABEZA MARTILLO

HUMMER HEAD NUT



REF.
M4 52074
M5 52075
M6 52076

BARRA COLGADOR CON GOMA

HANGER TUBE WITH PLASTIC PROFILE



REF.
195.A.PM.4

CONJUNTO SOPORTE LATERAL

SIDE TUBE HANGER SET



REF.
5569

TUERCA ANTIDESLIZANTE CON BOLA

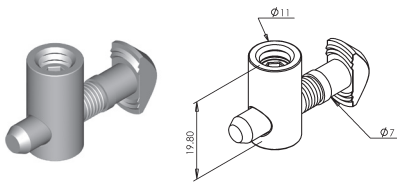
SPRING-BALL NUT



REF.
M4 5064
M5 5065
M6 5066

CONECTOR PARALELO canal 8mm

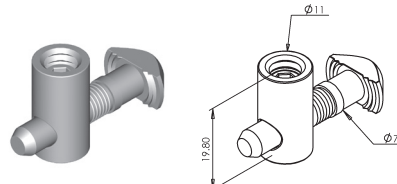
PARALLEL JOINT, 8mm slot



REF.
535130

CONECTOR PERPENDICULAR canal 8mm

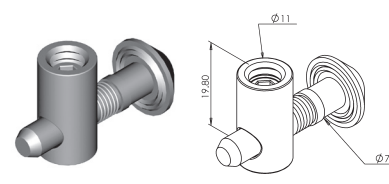
PERPENDICULAR JOINT, 8mm slot



REF.
535030

CONECTOR CABEZA REDONDA canal 8mm

ROUND HEAD JOINT, 8mm slot



REF.
535230

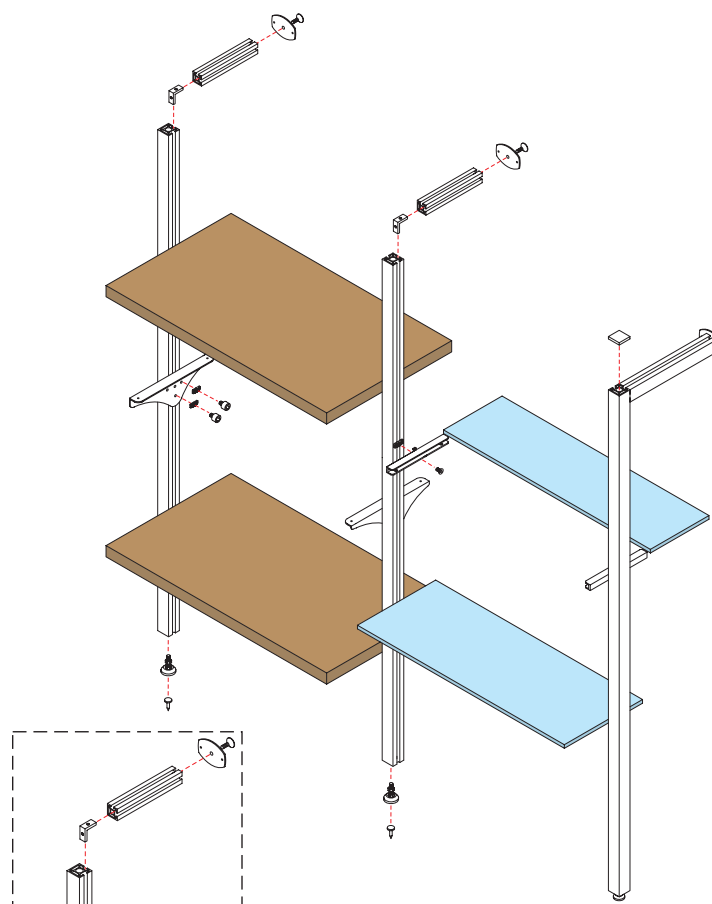
DOMINÓ

INSTRUCCIONES
DE MONTAJE

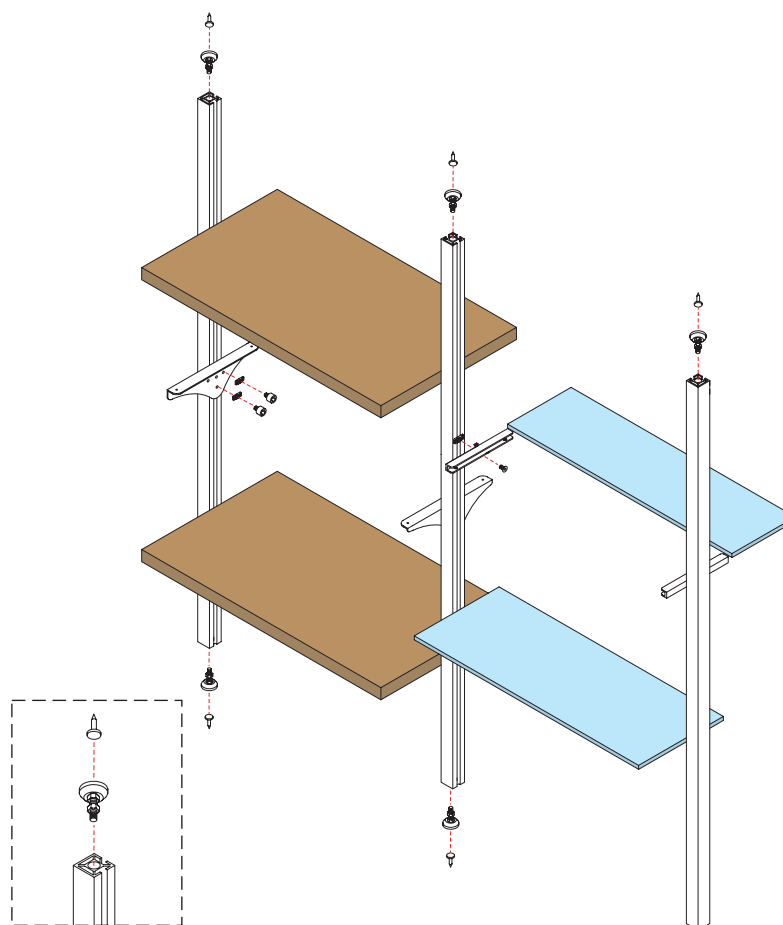
ASSEMBLY INSTRUCTIONS

ADINOR

MONTAJE SUELO-PARED FLOOR-WALL ASSEMBLY



MONTAJE SUELO-TECHO FLOOR-CEILING ASSEMBLY



SISTEMA ABP

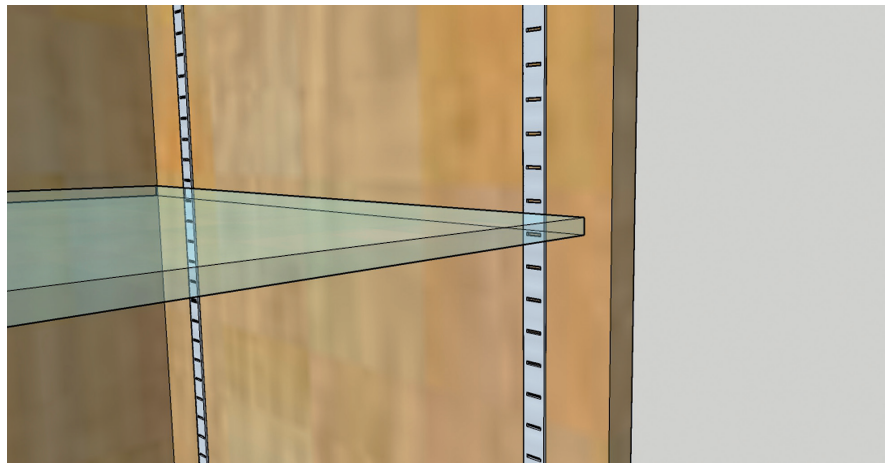
ABP SYSTEM

SISTEMAS
MODULARES

ABP

ABP SYSTEM

ADINOR

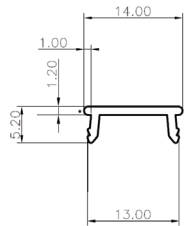


SISTEMA CREMALLERA EMPOTRABLE PARA ARMARIO

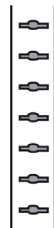
CUPBOARDS AND INSIDE CUPBOARDS ACCESSORIES

GUÍA PARA FORRAR ESTANTERÍAS DENTRO DE LOS ARMARIOS

WALL UPRIGHT TO BUILD CUPBOARDS SHELVES



Mecanizar con fresa de 12mm.
Use 10mm Ø drill.



Longitud / Length : 2,6 m.

REF	ACABADO / FINISHING
V100ABP	Plata Mate / Natural Anodized

CARTELITA PARA ACOPLAR A GUÍA DE SOBREPONER

SMALL BRACKET TO FIT PULLING WALL UPRIGHT



REF	ACABADO / FINISHING
V110ABP	Plata Mate / Natural Anodized

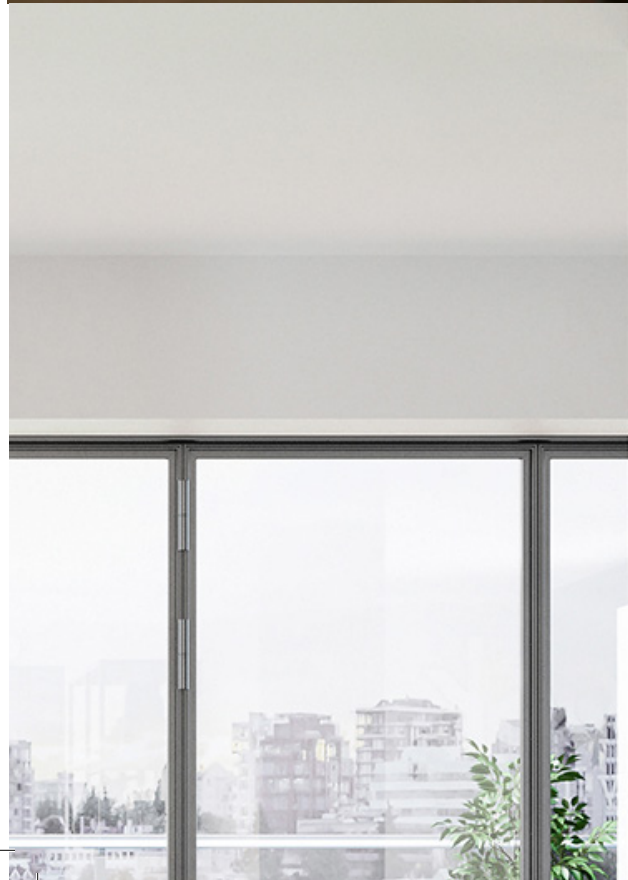
STRUKTURA

SISTEMAS
MODULARES











CONCEPTO FUNCIONAL

Diseño flexible y versátil, que permite fabricar muebles a medida mediante una perfecta y sencilla unión de perfiles. Pudiendo combinar:

- Tableros de 10-30 mm.
- Vidrios de 6-10 mm.

Mobiliario personalizado, adaptado en cada caso a las necesidades requeridas.

SUMMARY

Flexible and versatile design which allow to create custom furnitures because of the perfect and simple joint between the aluminium profiles.

This system permits to combine:

- 10-30 mm thickness board.
- 6-10 mm glass.

Customized furniture, adapted in each case to all needs.

SISTEMA STRUKTURA

20x20

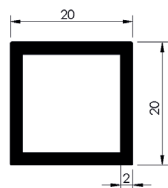
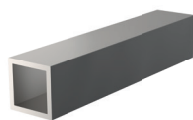
ADINOR

SISTEMA STRUKTURA 20x20

STRUKTURA SYSTEM 20x20

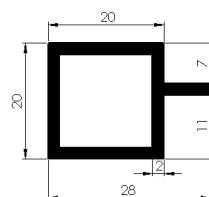
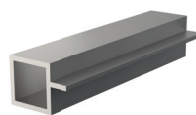
Perfil 20x20

Profile 20x20



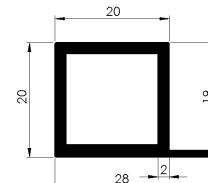
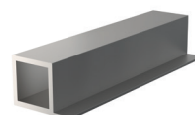
Perfil 20x20 Vidrio

Profile 20x20 for Glass



Perfil 20x20 madera

Profile 20x20 for wood



ACABADOS

FINISHINGS

LACADOS

COATED

Blanco Mate RAL 9003

Matt White RAL 9003

Negro Mate

Matt Black

Longitud / Length : 3,15 m

Longitud / Length : 3,15 m

Longitud / Length : 3,15 m

REF.

REF.

REF.

SKT2.L.BM03

SKT2.VL.BM03

SKT2.M.L.BM03

SKT2.L.NM

SKT2.V.L.NM

SKT2.M.L.NM

PERFIL REDUCTOR PARA VIDRIO 6-10 mm

GASKET FOR 6-10 MM GLASS

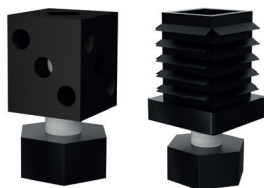


REF.

SKT2.PV.6-10

PIE NIVELADOR

ADJUSTABLE FEET



ACABADO / FINISHING

REF.

Metalico / metallic

SKT2.340

Plastico / Plastic

SKT2.330

ESCUADRA (Unión inglete)

INNER CONNECTION ANGLE



REF.

SKT2.125

PIEZA DE UNIÓN

JOINING ACCESSORY

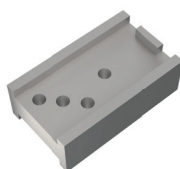


REF.

SKT2.120

PLANTILLA

DRILL TEMPLATE

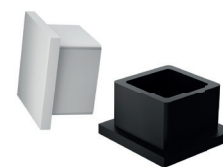


REF.

SKT2.410

TAPAS

END COVERS



ACABADO / FINISHING

REF.

Negro / Black

SKT2.530

Blanco / White

SKT2.540

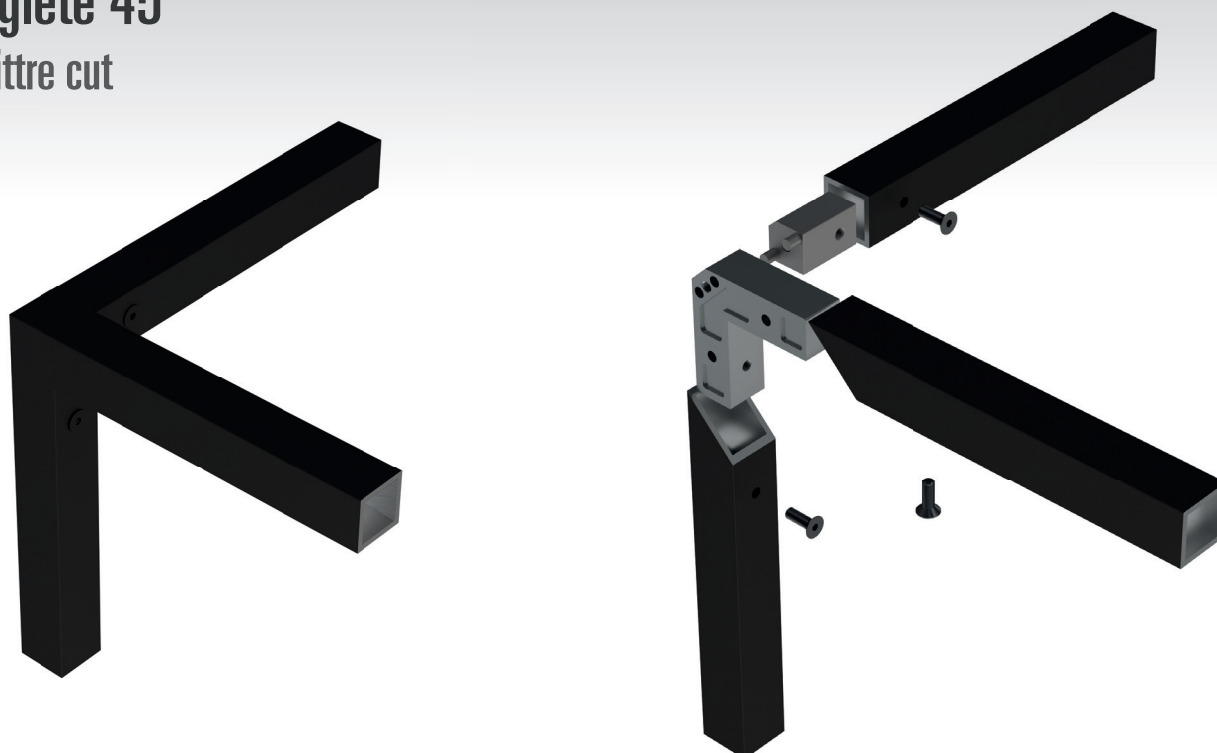
Tipos de montaje

Assembly types

Normal Straight Cut



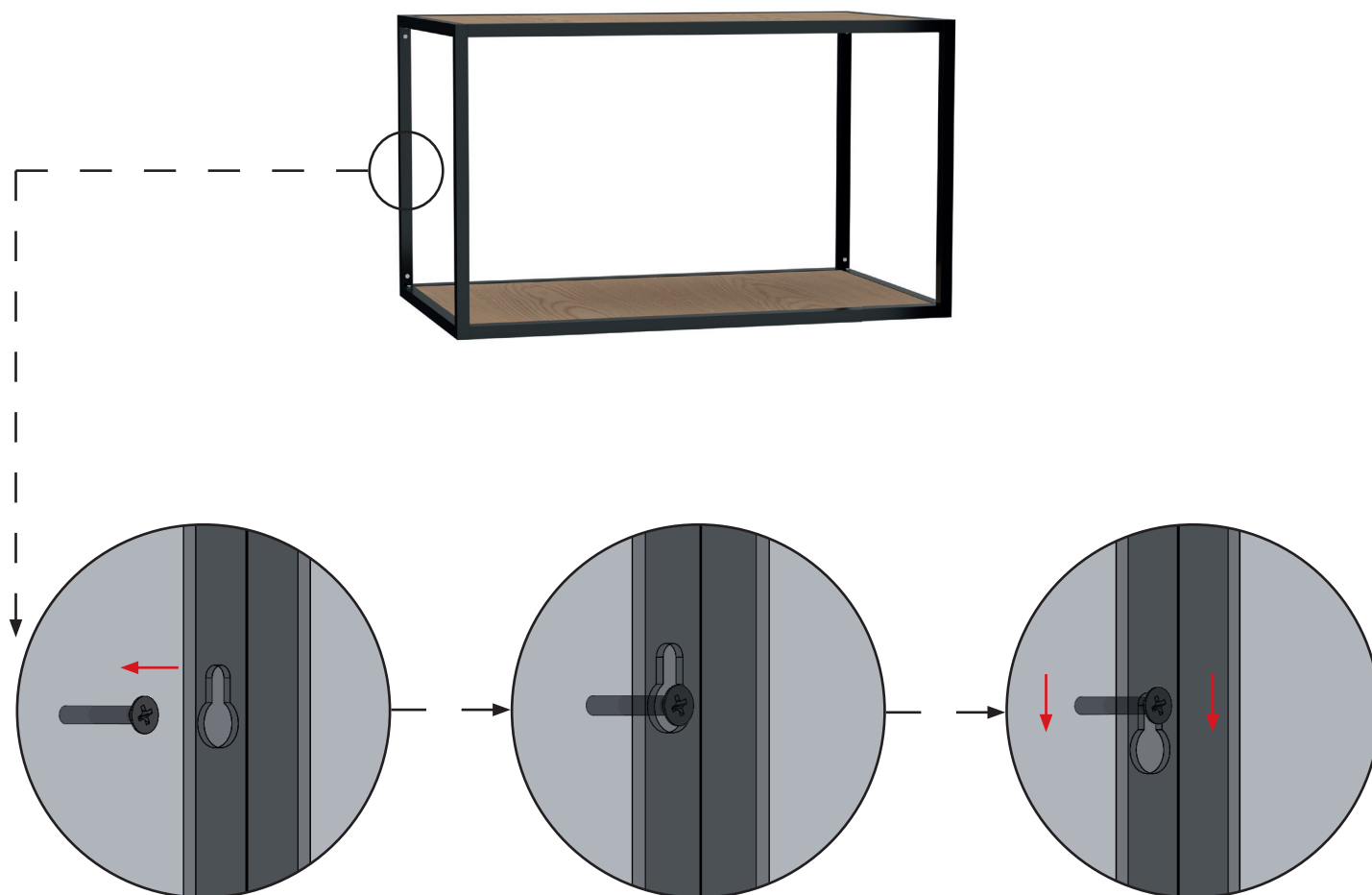
Inglete 45° Mitre cut



Mecanizado fijación pared

Keyhole machining

Para montaje encastrado a pared / For wall mounting



SISTEMA STRUKTURA

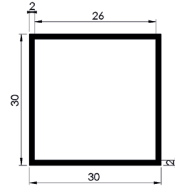
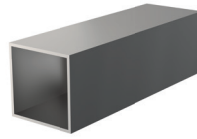
30x30

ADINOR

SISTEMA STRUKTURA 30x30 STRUKTURA SYSTEM 30x30

Perfil 30x30

Profile 30x30



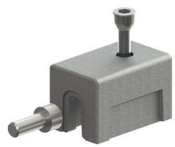
Longitud / Length : **3,15 m**

ACABADOS	FINISHINGS
LACADOS	COATED
Blanco Mate RAL 9003	Matt White RAL 9003
Negro Mate	Matt Black

REF.
SKT.L.BM03
SKT.L.NM

PIEZA DE UNIÓN

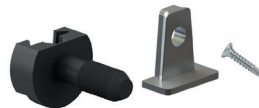
JOINING ACCESSORY



REF.
SKT.100

CLOCK

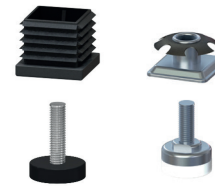
CLOCK



REF.
SKT.200

PIE NIVELADOR

ADJUSTABLE FEET



ACABADO / FINISHING	REF.
Negro / Black	SKT.310
Blanco / White	SKT.320

BISAGRA MARCO ALUMINIO 105° REGULACIÓN 3D AMORTIGUADA

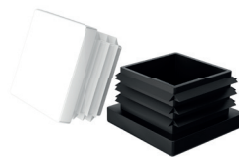
FACE FRAME 105° 3D REGULATION SOFT & SOFT
CLOSING HINGE



REF.	DESCRIPCIÓN	DESCRIPTION
HST11	RECTA	INSET
HST12	ACODADA	HALF-OVERLAY

TAPAS

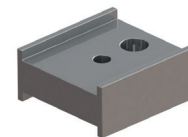
END COVERS



ACABADO / FINISHING	REF.
Negro / Black	SKT.510
Blanco / White	SKT.520

PLANTILLA

DRILL TEMPLATE



REF.
SKT.400

Tipos de montaje

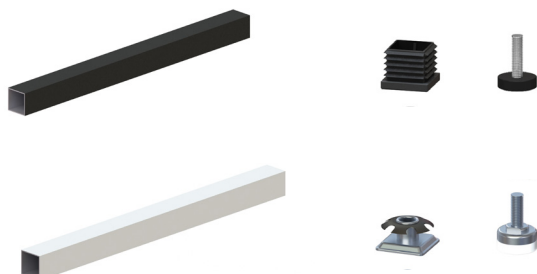
Assembly types

OPCIÓN BALDA BASTIDOR / BOARD FRAME OPTION

• Barras verticales de 2,7m + pie y suplemento

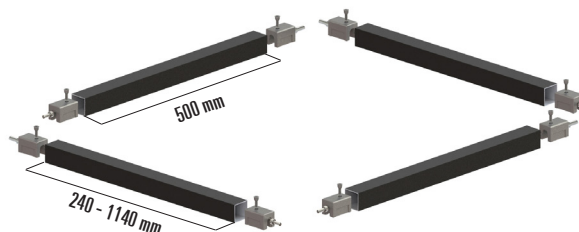
2.7 m Vertical profiles + adjustable feet

*MECANIZADOS DE BALDA INCLUIDOS / BOARD MACHINING INCLUDED



ACABADO	COATED	REF.	LARGO / LONG
Blanco Mate 9003	Matt White 9003	SKT.KIT.L.BM	2,7m
Negro Mate	Matt Black	SKT.KIT.L.NM	2,7m

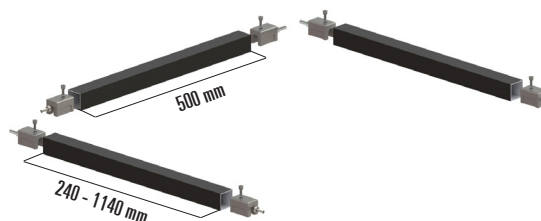
Balda 4 lados / 4 side board



ACABADO	COATED	REF.	ANCHO	FONDO	ACABADO	COATED	REF.	ANCHO	FONDO
Blanco Mate 9003	Matt White 9003	SKT.BM.B4.30	300	560	Negro Mate	Matt Black	SKT.NM.B4.30	300	560
Blanco Mate 9003	Matt White 9003	SKT.BM.B4.40	400	560	Negro Mate	Matt Black	SKT.NM.B4.40	400	560
Blanco Mate 9003	Matt White 9003	SKT.BM.B4.50	500	560	Negro Mate	Matt Black	SKT.NM.B4.50	500	560
Blanco Mate 9003	Matt White 9003	SKT.BM.B4.60	600	560	Negro Mate	Matt Black	SKT.NM.B4.60	600	560
Blanco Mate 9003	Matt White 9003	SKT.BM.B4.70	700	560	Negro Mate	Matt Black	SKT.NM.B4.70	700	560
Blanco Mate 9003	Matt White 9003	SKT.BM.B4.80	800	560	Negro Mate	Matt Black	SKT.NM.B4.80	800	560
Blanco Mate 9003	Matt White 9003	SKT.BM.B4.90	900	560	Negro Mate	Matt Black	SKT.NM.B4.90	900	560
Blanco Mate 9003	Matt White 9003	SKT.BM.B4.100	1000	560	Negro Mate	Matt Black	SKT.NM.B4.100	1000	560
Blanco Mate 9003	Matt White 9003	SKT.BM.B4.110	1100	560	Negro Mate	Matt Black	SKT.NM.B4.110	1100	560
Blanco Mate 9003	Matt White 9003	SKT.BM.B4.120	1200	560	Negro Mate	Matt Black	SKT.NM.B4.120	1200	560



Balda 3 lados / 3 side board



ACABADO	COATED	REF.	ANCHO	FONDO	ACABADO	COATED	REF.	ANCHO	FONDO
Blanco Mate 9003	Matt White 9003	SKT.BM.B3.30	300	560	Negro Mate	Matt Black	SKT.NM.B3.30	300	560
Blanco Mate 9003	Matt White 9003	SKT.BM.B3.40	400	560	Negro Mate	Matt Black	SKT.NM.B3.40	400	560
Blanco Mate 9003	Matt White 9003	SKT.BM.B3.50	500	560	Negro Mate	Matt Black	SKT.NM.B3.50	500	560
Blanco Mate 9003	Matt White 9003	SKT.BM.B3.60	600	560	Negro Mate	Matt Black	SKT.NM.B3.60	600	560
Blanco Mate 9003	Matt White 9003	SKT.BM.B3.70	700	560	Negro Mate	Matt Black	SKT.NM.B3.70	700	560
Blanco Mate 9003	Matt White 9003	SKT.BM.B3.80	800	560	Negro Mate	Matt Black	SKT.NM.B3.80	800	560
Blanco Mate 9003	Matt White 9003	SKT.BM.B3.90	900	560	Negro Mate	Matt Black	SKT.NM.B3.90	900	560
Blanco Mate 9003	Matt White 9003	SKT.BM.B3.100	1000	560	Negro Mate	Matt Black	SKT.NM.B3.100	1000	560
Blanco Mate 9003	Matt White 9003	SKT.BM.B3.110	1100	560	Negro Mate	Matt Black	SKT.NM.B3.110	1100	560
Blanco Mate 9003	Matt White 9003	SKT.BM.B3.120	1200	560	Negro Mate	Matt Black	SKT.NM.B3.120	1200	560



OPCIÓN BALDA CLOCKS / CLOCK BOARD OPTION

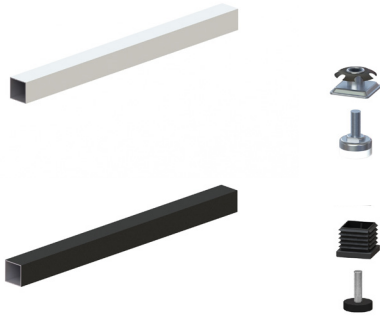
• Barras verticales de 2,7m + pie y suplemento

2.7 m Vertical profiles + adjustable feet

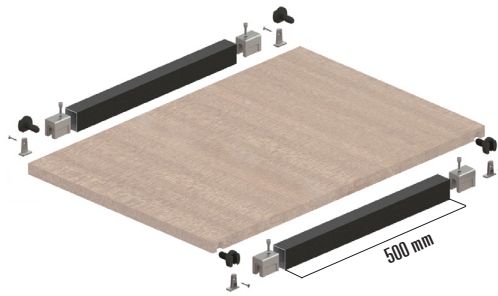
*MECANIZADOS DE BALDA INCLUIDOS / BOARD MACHINING INCLUDED

ACABADO	COATED	REF.	LONG
Blanco Mate 9003	Matt White 9003	SKT.KIT.L.BM	2,7 m
Negro Mate	Matt Black	SKT.KIT.L.NM	2,7 m

*BALDA NO INCLUIDA / BOARD NOT INCLUDED



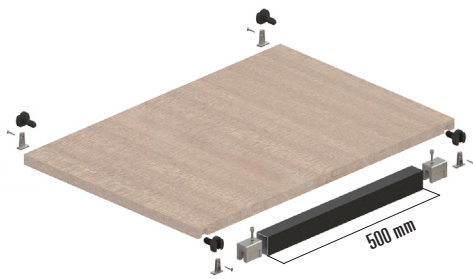
Balda A: Balda 2 laterales + clocks / 2 lateral board + clocks



ACABADO	COATED	REF.	ANCHO	FONDO
Blanco Mate 9003	Matt White 9003	SKT.BM.B2L+C	100-1200	560
Negro Mate	Matt Black	SKT.NMB2L+C	100-1200	560

*BALDA NO INCLUIDA / BOARD NOT INCLUDED

Balda B: Balda 1 lateral + clocks / 1 lateral board + clocks



ACABADO	COATED	REF.	ANCHO	FONDO
Blanco Mate 9003	Matt White 9003	SKT.BM.B1L+C	100-1200	560
Negro Mate	Matt Black	SKT.NMB1L+C	100-1200	560

*BALDA NO INCLUIDA / BOARD NOT INCLUDED

Balda C: Clocks



REF.

SKT.200.KIT

*BALDA NO INCLUIDA / BOARD NOT INCLUDED