



PUERTAS ABATIBLES Y PLEGABLES

FOLDING AND BIFOLDING DOOR SYSTEMS

ABATIBLES VIDRIO
FOLDING GLASS DOORS

114

ABATIBLES
BIFOLDING DOORS

116

PLEGABLES
BIFOLDING DOORS

123

ABATIBLES VIDRIO FOLDING DOORS



KIT PUERTA ABATIBLES

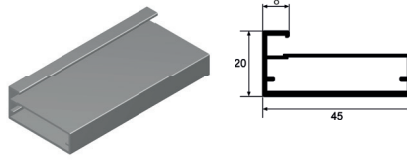
VIDRIO

KIT GLASS FOLDING DOORS

ADINOR

20x45 P8

PERFIL 20x45 P8
20x45 P8 PROFILE

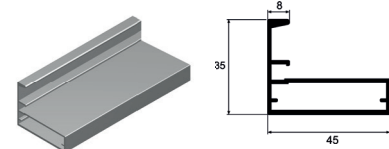


**PUERTA ALUMINIO HASTA
2000x550mm
(4 mecanizados bisagra)**
ALUMINIUM FRAME DOOR UP TO
2000x550mm (4 hinges drill)

**PUERTA ALUMINIO HASTA
2500x550mm
(5 mecanizados bisagra)**
ALUMINIUM FRAME DOOR UP TO
2500x550mm (5 hinges drill)

35x45 P8

PERFIL 35x45 P8
35x45 P8 PROFILE

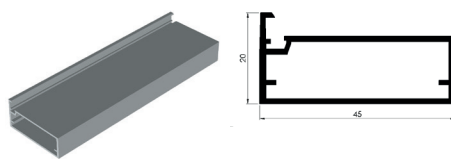


**PUERTA ALUMINIO HASTA
2800x550mm
(6 mecanizados bisagra)**
ALUMINIUM FRAME DOOR UP TO
2800x550mm (6 hinges drill)

ACABADOS	FINISHINGS	Longitud / Length : 2000x550 mm.	Longitud / Length : 2500x550 mm.	Longitud / Length : 2800x550 mm.
LACADOS	COATED	REF.	REF.	REF.
Negro Mate	Mat Black	7995KIT.L.NM.2	7995KIT.L.NM.25	7995KIT.L.NM.28
ANODIZADOS	ANODIZED	REF.	REF.	REF.
Plata Mate	Natural Anodized	7995KIT.A.PM.2	7995KIT.A.PM.25	7995KIT.A.PM.28

20x45 P4N

PERFIL 20x45mm
20x45mm PROFILE

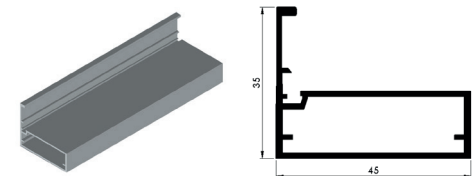


**PUERTA ALUMINIO HASTA
2000x550mm
(4 mecanizados bisagra)**
ALUMINIUM FRAME DOOR UP TO
2000x550mm (4 hinges drill)

**PUERTA ALUMINIO HASTA
2500x550mm
(5 mecanizados bisagra)**
ALUMINIUM FRAME DOOR UP TO
2500x550mm (5 hinges drill)

35x45 P4

PERFIL 35x45mm
35x45mm PROFILE



**PUERTA ALUMINIO HASTA
2800x550mm
(6 mecanizados bisagra)**
ALUMINIUM FRAME DOOR UP TO
2800x550mm (6 hinges drill)

ACABADOS	FINISHINGS	Longitud / Length : 2000x550 mm.	Longitud / Length : 2500x550 mm.	Longitud / Length : 2800x550 mm.
LACADOS	COATED	REF.	REF.	REF.
Negro Mate	Mat Black	7888KIT.L.NM.2	7888KIT.L.NM.25	7888KIT.L.NM.28
ANODIZADOS	ANODIZED	REF.	REF.	REF.
Plata Mate	Natural Anodized	7888KIT.A.PM.2	7888KIT.A.PM.25	7888KIT.A.PM.28

BISAGRA HETTICH BLACK RECTA / ACODADA / SUPERACODADA

OVERLAY / HALF OVERLAY / INSET MOUNTING /
HETTICH BLACK HINGE



REF.
HBH12 (Recta)
HBH22 (Acodada)
HBH32 (Superacodada)

INCLUYE:
EMBELLECEDOR
CAZOLETA Y BRAZO

BASE AVIÓN HETTICH BLACK CON REGULACIÓN EXCÉNTRICA

HETTICH BLACK CLIP PLATE

H = 0

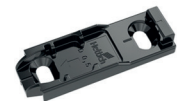


REF.
HBH41

BASE RECTA HETTICH BLACK

HETTICH BLACK CLIP PLATE

H = 0'5



REF.
HBH44

ABATIBLES
PLEGABLES

ABATIBLES

FOLDING DOORS

RUSHYOURTEET



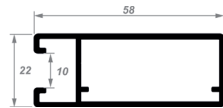
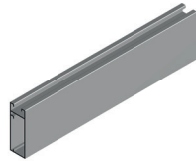
ABATIBLES BT60

BT60 FOLDING DOORS

ADINOR

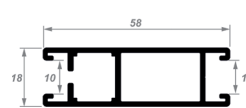
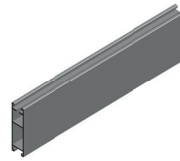
BT60

TIRADOR BT60 10mm
10mm BT60 HANDLE PROFILE



H BT60

PERFIL H BT60 10mm
10mm BT60 H PROFILE



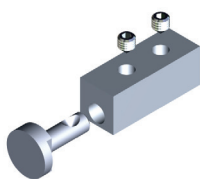
ACABADOS	FINISHINGS	Longitud / Length : 2,7 m.	Longitud / Length : 3 m.
LACADOS	COATED	REF.	REF.
Blanco Mate Ral 9010	Mat White Ral 9010	BT110.L.BM	BT210.L.BM
Negro Mate	Mat Black	BT110.L.NM	BT210.L.NM
ANODIZADOS	ANODIZED	REF.	REF.
Plata Mate	Natural Anodized	BT110.A.PM	BT210.A.PM
MELAMINA	MELAMINE	REF.	REF.
Roble RO 444	Oak	BT110.M.RBRO	BT210.M.RBRO
Textil Coral	Textil	BT110.M.TXCO	BT210.M.TXCO
Sapely D2517	Sapely	BT110.M.SPD	BT210.M.SPD
Haya Vapor. 428	Steam Beech	BT110.M.YV	BT210.M.YV
Blanco Rebornizable	White	BT110.M.MR	BT210.M.MR
MADERA	NATURAL WOOD	REF.	REF.
Roble Francés	Oak	BT110.C.RB	BT210.C.RB
Sapely	Sapely	BT110.C.SP	BT210.C.SP
Cerezo	Cherry Tree	BT110.C.CZ	BT210.C.CZ
Pino	Pine	BT110.C.PN	BT210.C.PN
Haya Blanca	Beech Tree	BT110.C.Y	BT210.C.Y
VINILO	VINYL	REF.	REF.
Blanco RAL 9003	Blanco RAL 9003	BT110.V.9003	BT210.V.9003

ABATIBLES
PLEGABLES

COMPLEMENTOS COMPLEMENTS

TENSOR UNIÓN TIRADOR BT60 CON H BT60

PERPENDICULAR JOINT



REF.

BT302

Bolsa 4un. / 4un Box

GOMA REDUCTORA VIDRIO 4mm. BT60

BT60 PLASTIC GASKET FOR 4mm. GLASS



REF.

BT303.4

Rollo / Roll: 100m

GOMA REDUCTORA VIDRIO 5mm. BT60

BT60 PLASTIC GASKET FOR 5mm. GLASS



REF.

BT303.5

Rollo / Roll: 100m

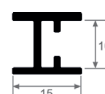
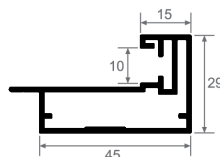
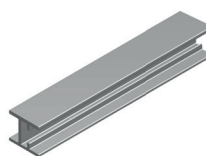
ABATIBLES BT10

BT10 FOLDING DOORS

ADINOR

VHBT10mm.
TIRADOR VHBT 10mm.
10mm. VHBT HANDLE PROFILE

HBT10mm.
PERFIL H BT 10mm.
10mm. BT H PROFILE



ACABADOS

FINISHINGS

Longitud / Length : **2,6 m.**

Longitud / Length : **3 m.**

LACADOS

COATED

REF.

REF.

Blanco Brillo Ral9010

White Ral9010

BT100.L.B

BT200.L.B

Negro Mate

Mat Black

BT100.L.NM

BT200.L.NM

ANODIZADOS

ANODIZED

REF.

REF.

Plata Brillo Repulido

Polished Silver

BT100.A.P

BT200.A.P

Plata Mate

Natural Anodized

BT100.A.PM

BT200.A.PM

COMPLEMENTOS COMPLEMENTS

ESCUADRA 42x42 PERFIL BT + 4 TORNILLOS

42X42 INNER CONNECTION ANGLE FOR BT + 4 SCREWS



REF.

BT300

ESCUADRA REMATE 42x5 PERFIL BT + 3 TORNILLOS

42X5 INNER CONNECTION ANGLE FOR BT+ 3 SCREWS

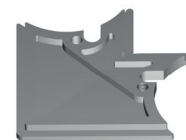


REF.

BT301

CONJUNTO 4 ESCUADRAS DE ZAMAK + 8 TORNILLOS

4 ZAMAK INNER CONNECTION ANGLE + 8 SCREWS



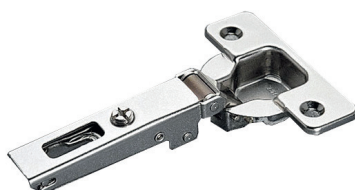
REF.

7932

BISAGRAS SALICE RECTA /ACODADA / SUPERACODADA

OVERLAY / HALF OVERLAY / INSET MOUNTING / SALICE HINGE

Espesor **19-35mm.**
Thickness **19-35mm.**



REF.

H12 (Recta)

H22 (Acodada)

H32 (Superacodada)

BASE SALICE CON REGULACIÓN

SALICE CLIP PLATE

H = 0



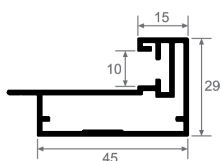
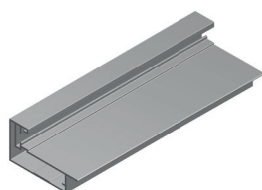
REF.

HS42

ABATIBLES BT10 KIT

BT10 SET

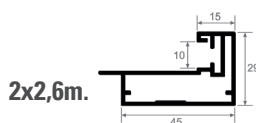
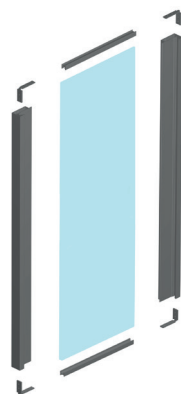
ADINOR



KIT BT10mm.

KIT DE PUERTA ABATIBLE
FOLDING DOOR KIT

COORTE RECTO
STRAIGHT CUT



2un.



2un.



4un.

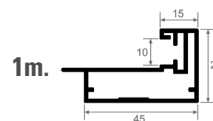
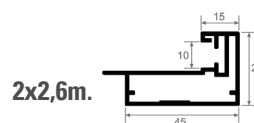
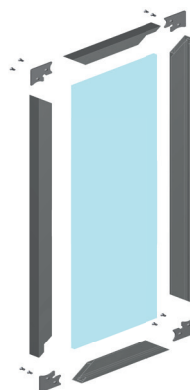


Mecanizados
Bisagra

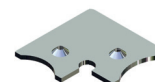
KIT BT10mm.

KIT DE PUERTA ABATIBLE
FOLDING DOOR KIT

COORTE A INGLETE
MITRE CUT



4un.



4un.



Mecanizados
Bisagra

ACABADOS

FINISHINGS

LACADOS

COATED

REF.

REF.

Blanco Brillo Ral 9010

White

BTK.CR.L.B

BTK.CI.L.B

Negro Mate

Mat Black

BTK.CR.L.NM

BTK.CI.L.NM

ANODIZADOS

ANODIZED

REF.

REF.

Plata Brillo Repulido

Polished Silver

BTK.CR.A.P

BTK.CI.A.P

Plata Mate

Natural Anodized

BTK.CR.A.PM

BTK.CI.A.PM

ABATIBLES
PLEGABLES

ABATIBLES COMPLEMENTOS

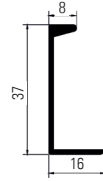
FOLDING DOORS
COMPLEMENTS

ADINOR

6m. Condiciones especiales de envío
6m. Special shipping conditions

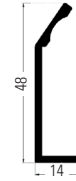
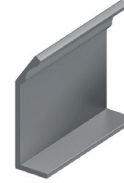
TIRADOR 37x16

TIRADOR 37x16
37x16 HANDLE PROFILE



TIRADOR 48x14

TIRADOR 48x14
48x14 HANDLE PROFILE

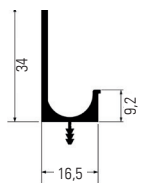
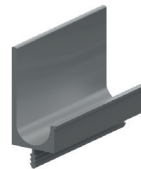


PARA PERFIL TIRADOR BT10
FOR BT10 HANDLE PROFILE

ACABADOS	FINISHINGS	Longitud / Lenght : 5 m.	Longitud / Lenght : 150 mm.	Longitud / Lenght : 5,2 m.
LACADOS	COATED	REF.	REF.	REF.
Blanco	White	7997.L.B	7997.L.B.150	7794.L.B.52
Negro Mate	Mat Black	7997.L.NM	7997.L.NM.150	7794.L.NM.52
ANODIZADOS	ANODIZED	REF.	REF.	REF.
Plata Brillo	Polished Silver	7997.A.P	-	7794.A.P.52
Plata Mate	Natural Anodized	7997.A.PM	7997.A.PM.150	7794.A.PM.52

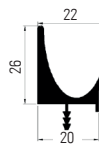
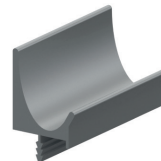
TIRADOR J

TIRADOR J
J HANDLE PROFILE



TIRADOR GOLA AIR

TIRADOR GOLA AIR
GOLA AIR HANDLE PROFILE



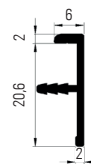
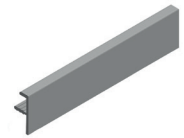
CANTONERA

CANTONERA CRVIR
CRVIR BORDER PROFILE



CANTONERA

CANTONERA AAR
AAR BORDER PROFILE

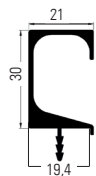
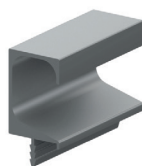


ACABADOS	FINISHINGS	Longitud / Lenght : 6 m.	Longitud / Lenght : 4 m.	Longitud / Lenght : 4m.	Longitud / Lenght : 5,2 m.
LACADOS	COATED	REF.	REF.	REF.	REF.
Blanco Mate RAL 9003	Mat White RAL9003	-	-	-	79929.L.BM03
Negro Mate	Mat Black	-	-	-	79929.L.NM
Repintable	Pre-paint	-	710.IROD.A.T	-	-
ANODIZADOS	ANODIZED	REF.	REF.	REF.	REF.
Plata Brillo	Polished Silver	-	-	-	-
Plata Mate	Natural Anodized	710.A.PM	710.IROD.PM	79921.A.PM	79929.A.PM



TIRADOR GOLA

TIRADOR GOLA
GOLA HANDLE PROFILE



Longitud / Length : **5.2 m.**

REF.

7294.L.BM03.52

7294.L.NM.52

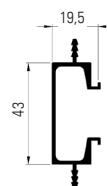
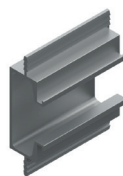
7294.L.T.52

REF.

7294.A.PM.52

TIRADOR HORIZON

TIRADOR HORIZON
HORIZON HANDLE PROFILE



Longitud / Length : **4 m.**

REF.

7291.L.BM03.4

7291.L.NM.4

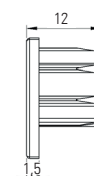
7291.L.T.4

REF.

7291.PM.4

TAPA HORIZON

TAPA HORIZON
HORIZON END COVER



IZQ+DER / RIGHT+LEFT

REF.

7291TL.L.BM03

7291TL.L.NM

7291TL.L.T

REF.

7291TL.L.PM

ACABADOS

FINISHINGS

LACADOS

COATED

Blanco Mate RAL 9003

Mat White RAL 9003

Negro Mate

Mat Black

Repintable

Pre-paint

ANODIZADOS

ANODIZED

Plata Mate

Natural Anodized

PLETINA 5x2

PLETINA ADHESIVA
SELF-ADHESIVE PLATE



Longitud / Length : **3 m.**

REF.

453.A.PM

PLETINA 8x2

PLETINA ADHESIVA
SELF-ADHESIVE PLATE



Longitud / Length : **3 m.**

REF.

4531.A.PM

PERFIL T 7,5mm.

PERFIL T
T PROFILE



Longitud / Length : **6 m.**

REF.

454.A.PM

ACABADOS

FINISHINGS

ANODIZADOS

ANODIZED

Plata Mate

Natural Anodized

TIRADOR SENSE ALUMINIO

SENSE ALUMINIUM HANDLE



El perfil de aluminio viene con un tratamiento para poderlo lacar en el color deseado.
Medida del tirador desde 150 mm. hasta 3000 mm.

*The aluminium profile has an special treatment that allows you to paint it in any colour wished.
Lenght of the handle: 150 mm. to 3000 mm.*

REF.	DESCRIPCION / DESCRIPTION
SKPA.4295464	Kit perfil 1 m. + 2 bisagras / 1 m. handle set + 2 hinges
SKPA.4585464	Kit perfil 3 m. + 6 bisagras / 3 m. handle set + 6 hinges
SKPA.5685464	Bisagra para tirador Sense / Sense Hinge handle



COMPLEMENTOS

COMPLEMENTS

BISAGRA RECTA/ACODADA/SUPERACODADA CON SOFT CLOSING

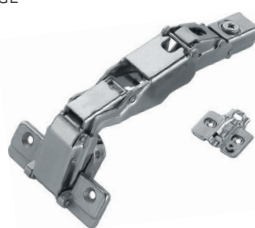
110° / HALF OVERLAY / INSET MOUNTING SOFT CLOSING HINGE



REF.
H15.PL.R
H25.PL.A
H35.PL.SA

BISAGRA RECTA/ACODADA/SUPERACODADA CON SOFT CLOSING

165° / HALF OVERLAY / INSET MOUNTING SOFT CLOSING HINGE



REF.
H45.PL.165R
H45.PL.165A
H45.PL.165SA

BASE CON REGULACIÓN PARA TABLERO.

CLIP PLATE FOR BOARD

H=0



ESPESOR TABLERO/ DOOR HEIGHT	REF.
19mm	H55.PL.19
16mm	H55.PL.16

BISAGRA MASTER BLACK RECTA / ACODADA / SUPERACODADA CON SOFT CLOSING

OVERLAY / HALF OVERLAY / INSET MOUNTING SOFT CLOSING MASTER BLACK HINGE



REF.
HBSA12 (Recta)
HBSA22 (Acodada)
HBSA32 (Superacodada)

INCLUYE:
EMBELLECEDOR
CAZOLETA Y BRAZO

BASE AVIÓN MASTER BLACK CON REGULACIÓN EXCÉNTRICA

MASTER BLACK CLIP PLATE

Tablero 19 mm



REF.
HBSA41

BASE RECTA MASTER BLACK

MASTER BLACK CLIP PLATE - HORIZONTAL

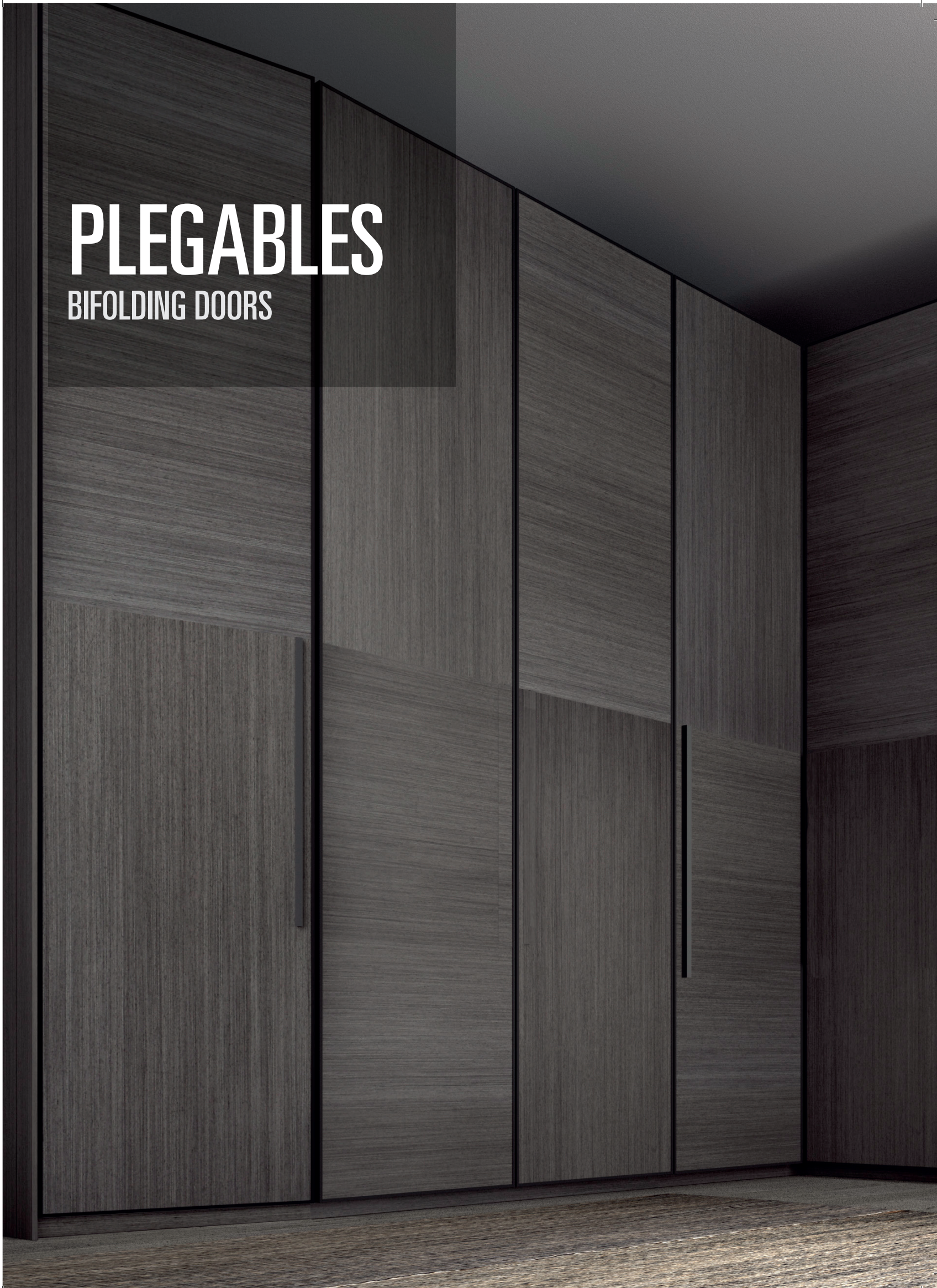
Tablero 19 mm



REF.
HBSA44

PLEGABLES

BIFOLDING DOORS



PLEGABLES

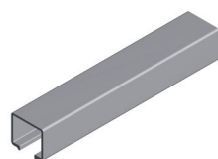
BIFOLDING DOORS

ADINOR

6m. Condiciones especiales de envío
6m. Special shipping conditions

GUIA SUPERIOR ALUMINIO

UPPER RAIL



Longitud / Length : 6 m.

REF.	LACADOS	COATED
PL112.L.B.6	Blanco	White
REF.	ANODIZADOS	ANODIZED
PL111.A.PM.6	Plata Mate	Natural Anod.

GUIA INFERIOR ALUMINIO

LOWER RAIL



Longitud / Length : 6 m.

REF.	LACADOS	COATED
PL122.L.B.6	Blanco	White
REF.	ANODIZADOS	ANODIZED
PL121.A.PM.6	Plata Mate	Natural Anod.

CARRO SUPERIOR

UPPER ROLLER



REF.
PL130

CARRO INFERIOR

BOTTOM ROLLER

REVERSIBLE / REVERSIBLE



REF.
PL140

CONJUNTO 4 BISAGRAS PUERTA PLEGABLE + 8 CLIPS

SET OF 4 CLIP-ON CENTRE HINGES



REF.
PL160

FIJACION CARRO SUPERIOR CON REGULACIÓN

SUPPORT WITH HEIGHT-ADJUSTMENT CAPABILITY

REVERSIBLE / REVERSIBLE



REF.	DESCRIPCION	DESCRIPTION
PL153	Derecha /Izquierda	Right / Left

DISTANCIADOR PARA PLEGABLE CORREDERA

SPACER SPINDLE FOR SLIDING FOLDING DOOR



REF.
PL170

PLEGABLES KIT

BIFOLDING DOOR SET

ADINOR

ABATIBLES
PLEGABLES

KIT PARA 1 PUERTA PLEGABLE (2 HOJAS)

KIT FOR 1 FOLDING DOOR WITH 2 PANELS

REVERSIBLE / REVERSIBLE



Ref. PL140
1 un.



1 un.



Ref. PL130
1 un.



8 un. 4 un.
Ref. PL160

REF.	DESCRIPCION	DESCRIPTION
PL180	Derecha /Izquierda	Right / Left

KIT PARA 1 PUERTA PLEGABLE CORREDERA (2 HOJAS)

KIT FOR 1 SLIDING FOLDING DOOR WITH 2 PANELS

REVERSIBLE / REVERSIBLE



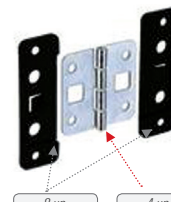
Ref. PL140
2 un.



2 un.



Ref. PL130
2 un.



8 un. 4 un.
Ref. PL160



Ref. PL170
2 un.

REF.	DESCRIPCION	DESCRIPTION
PL185	Derecha /Izquierda	Right / Left

INSTRUCCIONES
DE MONTAJE
ASSEMBLY INSTRUCTIONS

DESCÁRGATE LAS INSTRUCCIONES COMPLETAS EN:
www.adinor.info/instrucciones-de-montaje

DOWNLOAD THE COMPLETE ASSEMBLY INSTRUCTIONS
www.adinor.info/instrucciones-de-montaje