

SISTEMAS DE PUERTA COLGANTE PARA ARMARIO

CLOSET HANGING SYSTEMS

SISTEMA TORINO 4
TORINO SYSTEM

SISTEMA MUNICH BZ 28
MUNICH BZ SYSTEM



TORINO











CONCEPTO FUNCIONAL

De gran versatilidad, permite fabricar armarios de grandes dimensiones mediante un herraje que puede soportar hasta 80 kg. por puerta y que permanece oculto tras las puertas.

Posibilita la fabricación de puerta de madera con un espesor máximo de 30 mm.

Incorpora perfilera de aluminio:

- Para tablero de 19 mm.
- Para tablero de 10-11 mm.
- Para vidrio 4-5 mm.

Con las que podemos realizar puertas completas de vidrio o combinaciones de vidrio-madera.

SUMMARY

These aluminum fittings make possible to manufacture large size closets, as they resist up to 80 Kg each door and keep the fitting hidden behind the doors.

It is possible to manufacture 30mm thickness board.

The system incorporates aluminium profile:

- For 19 mm. thickness panel.
- For 10-11 mm. thickness panel.
- For 4-5 mm. glass panel.

With those aluminium profiles you can manufacture glass doors or combine glass and wood.



TORINO

ADINOR

6m. Condiciones especiales de envío
6m. Special shipping conditions

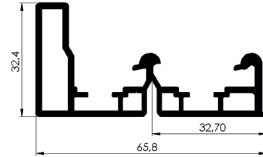
GUIAS SUPERIORES-INFERIORES 18-30mm. 18-30mm. THICKNESS BOARD UPPER-LOWER RAILS

GS28-30mm.

GUÍA REFORZADA SUPERIOR 28-30mm.
28-30mm. REINFORCED UPPER RAIL

Espesor tablero 28-30mm. Para perfilera aluminio 10-11mm

10-11mm. Aluminium profile frame. 28-30mm. Thickness board.



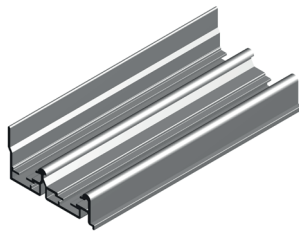
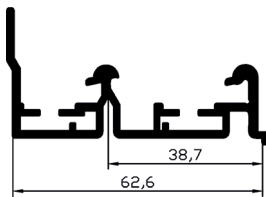
ACABADOS	FINISHINGS	6 m.
ANODIZADOS	ANODIZED	REF.
Plata Mate	Natural Anodized	-
Natural	Natural	817.A.N

GS25mm.

GUÍA SUPERIOR 25mm.
25mm. UPPER RAIL

Espesor tablero 25mm. Para perfilera aluminio 19 mm

19mm. Aluminium profile frame 25mm. Thickness board.



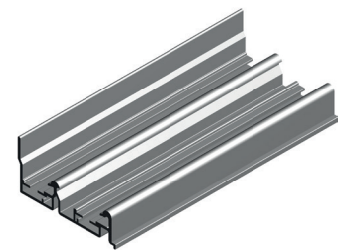
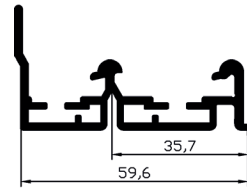
ACABADOS	FINISHINGS	6 m.
ANODIZADOS	ANODIZED	REF.
Plata Mate	Natural Anodized	-
Natural	Natural	813.A.N

GS22mm.

GUÍA SUPERIOR 22mm.
22mm. UPPER RAIL

Espesor tablero 22mm. Para perfilera aluminio 16 mm

16mm. Aluminium profile frame 22mm. Thickness board.



ACABADOS	FINISHINGS	6 m.
ANODIZADOS	ANODIZED	REF.
Plata Mate	Natural Anodized	-
Natural	Natural	814.A.N

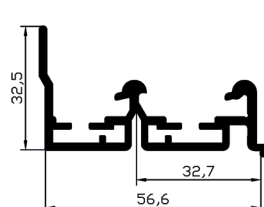
GS28-30mm.

GUÍA SUPERIOR 28-30mm.

28-30mm. UPPER RAIL

Esesor tablero 28-30mm. Para perfilera aluminio 10-11mm

10-11mm. Aluminium profile frame. 28-30mm. Thickness board.

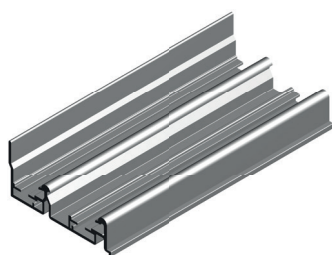
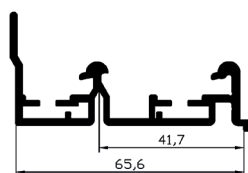


ACABADOS	FINISHINGS	6 m.
ANODIZADOS	ANODIZED	REF.
Plata Mate	Natural Anodized	-
Natural	Natural	812.A.N

GS18-19mm.

GUÍA SUPERIOR 18-19mm.

18-19 mm. UPPER RAIL



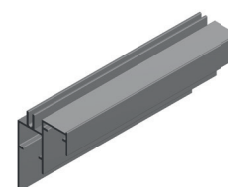
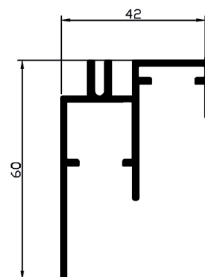
		6 m.
ANODIZADOS	ANODIZED	REF.
Plata Mate	Natural Anodized	-
Natural	Natural	815.A.N

GI18-30mm.

GUÍA INFERIOR 18-30mm.

LOWER RAIL FOR 18-30mm. BOARD

Para todos los espesores. All thickness board



		6 m.
ANODIZADOS	ANODIZED	REF.
Plata Mate	Natural Anodized	-
Natural	Natural	816.A.N

TORINO

KIT GUÍAS TRACK SET

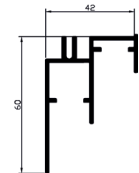
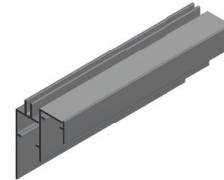
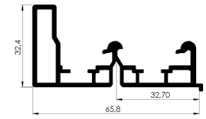
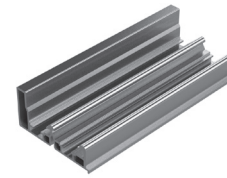
ADINOR

6m. Condiciones especiales de envío
6m. Special shipping conditions

KIT GUÍA REFORZADA 28-30mm.

KIT GUÍAS REFORZADO TABLERO 28-30 mm.
28-30mm. BOARD TRACKS KIT

Para perfilera aluminio 10-11mm
10-11mm. Aluminium profile frame

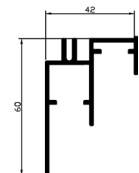
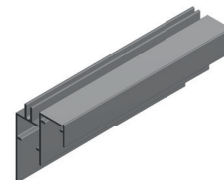
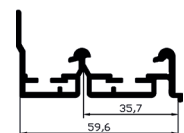


ACABADOS	FINISHINGS	2 m.	3 m.	4 m.	6 m.
ANODIZADOS	ANODIZED	REF.	REF.	REF.	REF.
Plata Mate	Natural Anodized	-	-	-	-
Natural	Natural	817KIT2M	817KIT3M	817KIT4M	817KIT6M

KIT GUÍA 25mm.

KIT GUÍAS TABLERO 25mm.
25mm. BOARD TRACKS KIT

Para perfilera aluminio 19mm
19mm. Aluminium profile frame



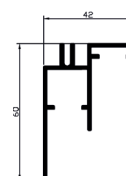
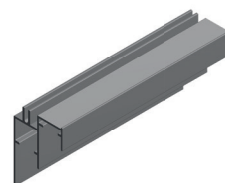
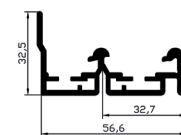
ACABADOS	FINISHINGS	2 m.	3 m.	4 m.	6 m.
ANODIZADOS	ANODIZED	REF.	REF.	REF.	REF.
Plata Mate	Natural Anodized	-	-	-	-
Natural	Natural	813KIT2M	813KIT3M	813KIT4M	813KIT6M

KIT GUÍA 28-30mm.

KIT GUÍAS TABLERO 28-30 mm.

28-30mm. BOARD TRACKS KIT

Para perfilera aluminio 10-11mm
10-11mm. Aluminium profile frame



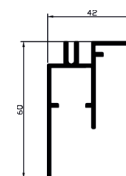
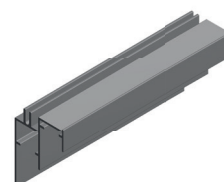
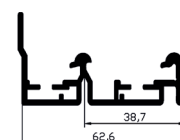
ACABADOS	FINISHINGS	2 m.	3 m.	4 m.	6 m.
ANODIZADOS	ANODIZED	REF.	REF.	REF.	REF.
Plata Mate	Natural Anodized	-	-	-	-
Natural	Natural	812KIT2M	812KIT3M	812KIT4M	812KIT6M

KIT GUÍA 22mm.

KIT GUÍAS TABLERO 22mm.

22mm. BOARD TRACKS KIT

Para perfilera aluminio 16mm
16mm. Aluminium profile frame

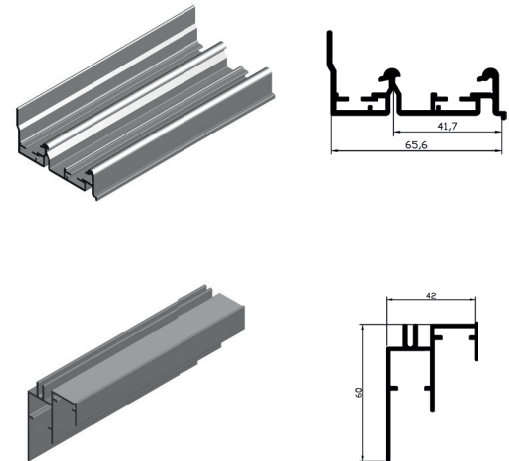


ACABADOS	FINISHINGS	2 m.	3 m.	4 m.	6 m.
ANODIZADOS	ANODIZED	REF.	REF.	REF.	REF.
Plata Mate	Natural Anodized	-	-	-	-
Natural	Natural	814KIT2M	814KIT3M	814KIT4M	814KIT6M

6m. Condiciones especiales de envío
6m. Special shipping conditions

KIT GUÍA 18-19mm.

KIT GUÍAS TABLERO 18-19mm.
18-19mm. BOARD TRACKS KIT



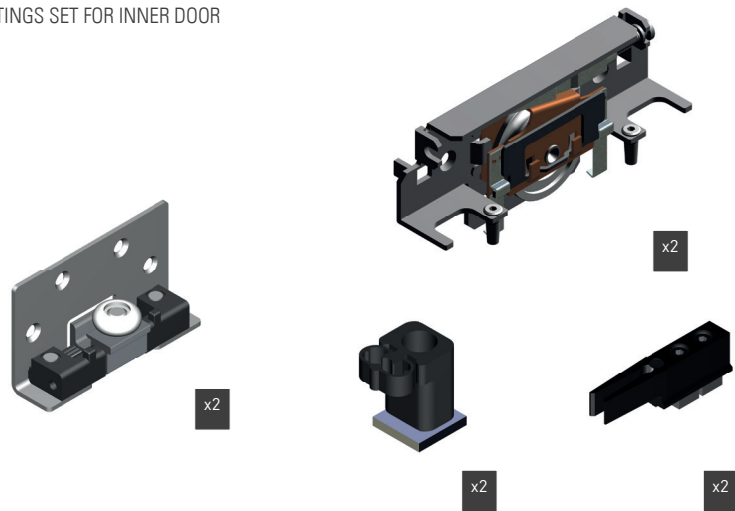
ACABADOS	FINISHINGS	2 m.	3 m.	4 m.	6 m.
ANODIZADOS	ANODIZED	REF.	REF.	REF.	REF.
Plata Mate	Natural Anodized	-	-	-	-
Natural	Natural	815KIT2M	815KIT3M	815KIT4M	815KIT6M

TORINO
COMPLEMENTOS
COMPLEMENTS

ADINOR

PUERTA INTERIOR

FITTINGS SET FOR INNER DOOR



REF.
887CPINT

FILM TEXTIL AUTOADHESIVO

SELF-ADHESIVE GLASS PROTECTOR FABRIC

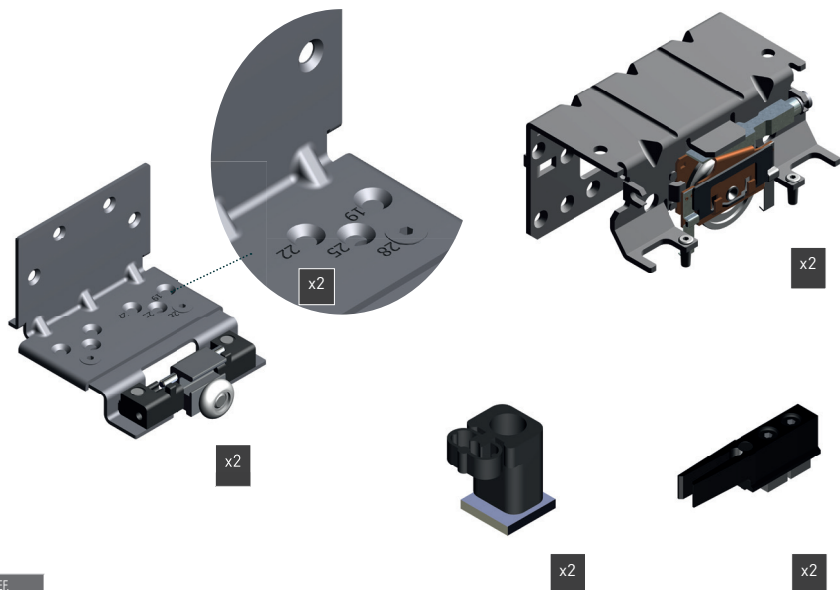
Rollos / Roll: **0,5 x 20m.**

REF.	Medida / Measure
1519	Rollos / Roll 0,5 x 20m
1519DB	Rollos / Roll 1 x 20m



PUERTA EXTERIOR

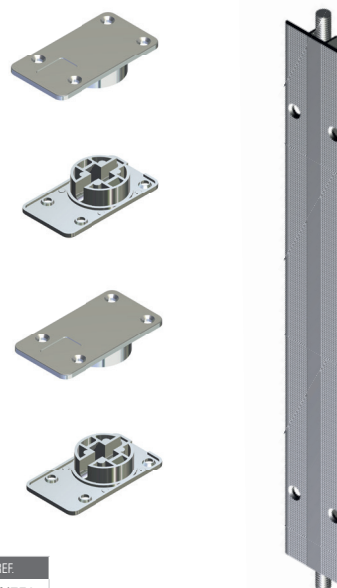
FITTINGS SET FOR OUTER DOOR



REF.
877CPEXT

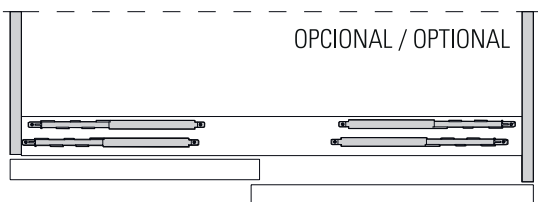
ENDEREZADOR PUERTA

DOOR STRAIGHTENER

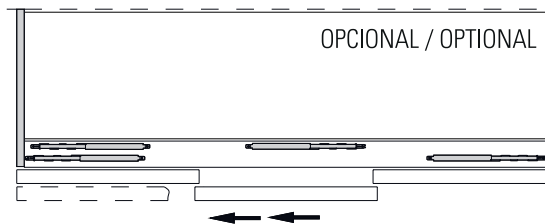


REF.
MUN750

Dos Puertas / Two Doors

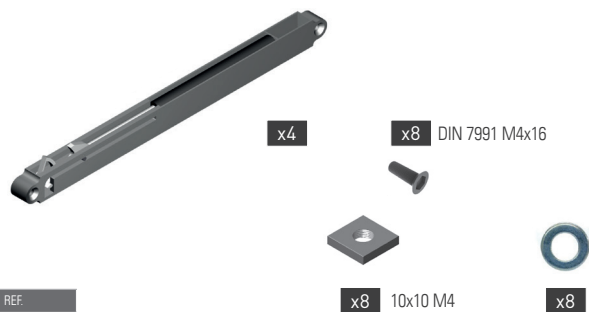


Tres Puertas / Three Doors



AMORTIGUADOR 25 & 40 kg.

25 & 40 kg. SOFT-CLOSING



REF.
893AMORT25
893AMORT40

AMORTIGUADOR INVERTIDO 25 & 40 kg.

25 & 40 kg. SOFT-CLOSING

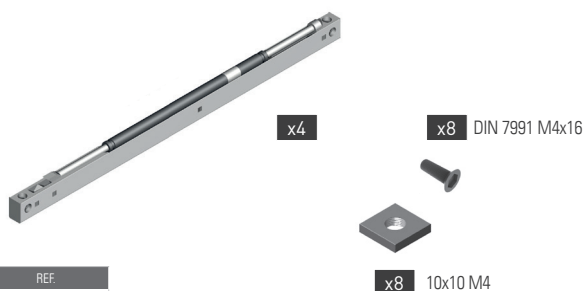
Especial para puertas estrechas
Special for narrow doors



REF.
894AMORTINV25
894AMORTINV40

AMORTIGUADOR 60 & 80 kg.

60 & 80 kg. SOFT-CLOSING



REF.
893AMORT60
893AMORT80

AMORTIGUADOR INVERTIDO 60 kg.

60 kg. SOFT-CLOSING

Especial para puertas estrechas
Special for narrow doors



REF.
894AMORTINV60

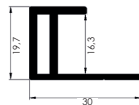
PERFILERIA DE ALUMINIO PARA TABLERO 16mm.

16mm. THICKNESS BOARD HANDLE PROFILES

6m. Condiciones especiales de envío
6m. Special shipping conditions

T. I. 16mm.
TIRADOR INT. 16mm.
19mm. INNER HANDLE
PROFILE

Esesor tablero 16mm
16mm. Thickness board



Longitud / Length: **5,4 m.**

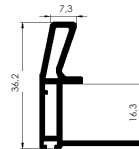
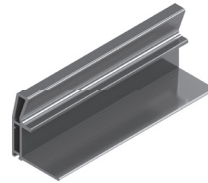
REF.

828.A.PM

-

T. EX. 16mm.
TIRADOR EXT. 16mm.
19mm. OUTER HANDLE
PROFILE

Esesor tablero 16mm
16mm. Thickness board



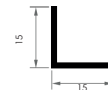
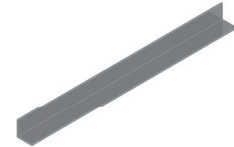
Longitud / Length: **5,4 m.**

REF.

838.A.PM

-

15x15
ÁNGULO 15x15
ANGLE PROFILE 15x15



Longitud / Length: **6 m.**

REF.

150.A.PM

-

ACABADOS

FINISHINGS

ANODIZADOS

ANODIZED

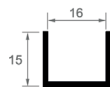
Plata Mate

Natural Anodized

Natural

Natural

U16mm.
U PARA TABLERO 16mm.
16mm. U PROFILE BOARD



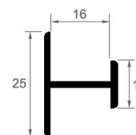
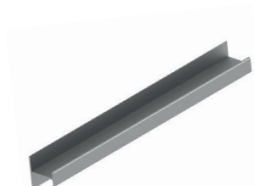
Longitud / Length: **6 m.**

REF.

152.A.PM

-

H16mm.
H PARA TABLERO 16mm.
16mm. H PROFILE BOARD



Longitud / Length: **6 m.**

REF.

1525.A.PM

-

ACABADOS

FINISHINGS

ANODIZADOS

ANODIZED

Plata Mate

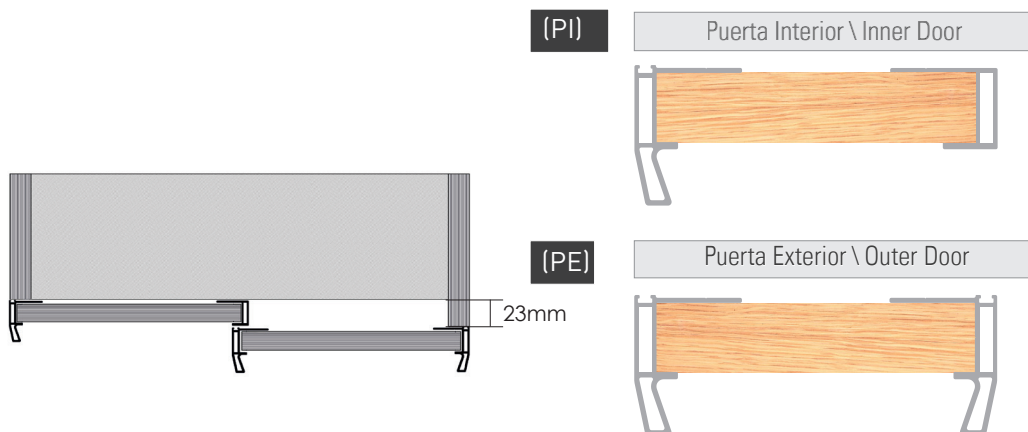
Natural Anodized

Natural

Natural

KIT PUERTAS 16mm.

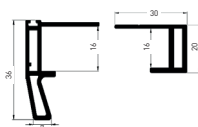
16mm. SLIDING DOOR KIT



KIT PI 16mm.

KIT PUERTA INTERIOR 16mm.
16mm. INNER DOOR SET

Espesor tablero 16mm
16mm. Thickness board



Contenido Kit
1x2,7m. Tirador torino interior
1x2,7m. Tirador torino exterior
2x2,7m. Cepillo 4x6

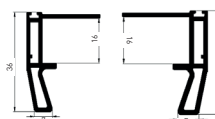
Kit Elements
1x2,7m. Torino Inner handle profile
1x2,7m. Torino Outer handle profile
2x2,7m. 4x6 Brush

REF.
828KPI.APM

KIT PE 16mm.

KIT PUERTA EXTERIOR 16mm.
16mm. OUTER DOOR SET

Espesor tablero 16mm
16mm. Thickness board



Contenido Kit
2x2,7m. Tirador Torino exterior
2x2,7m. Cepillo 4x6

Kit Elements
2x2,7m. Torino Inner handle profile
2x2,7m. 4x6 Brush

REF.
838KPE.APM

ACABADOS

ANODIZADOS

Plata Mate

FINISHINGS

ANODIZED

Natural Anodized

PERFILERIA DE ALUMINIO PARA TABLERO 18-19mm.

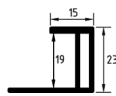
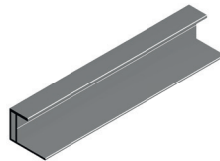
18-19mm. THICKNESS BOARD HANDLE PROFILES

6m. Condiciones especiales de envío
6m. Special shipping conditions

T.I. 19mm.

TIRADOR INT. 19mm.
19mm. INNER HANDLE
PROFILE

Espesor tablero 19mm
19mm. Thickness board



Longitud / Length: 5,4 m.

REF.

827.L.B

827.L.NM

REF.

827.A.PM

-

REF.

827.M.MR

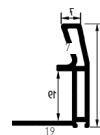
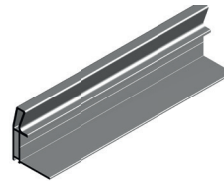
REF.

827.C.RB

T. EX. 19mm.

TIRADOR EXT. 19mm.
19mm. OUTER HANDLE
PROFILE

Espesor tablero 19mm
19mm. Thickness board



Longitud / Length: 5,4 m.

REF.

837.L.B

837.L.NM

REF.

837.A.PM

-

REF.

837.M.MR

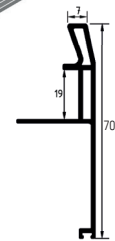
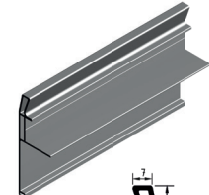
REF.

837.C.RB

T. EX. 19mm.

TIRADOR EXT. TAPALUZ 19mm.
19mm. EXTRA OUTER
HANDLE PROFILE

Espesor tablero 19mm
19mm. Thickness board



Longitud / Length: 5,4 m.

REF.

847.L.B

847.L.NM

REF.

847.A.PM

-

REF.

847.M.MR

REF.

847.C.RB

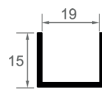
ACABADOS

FINISHINGS

LACADOS	COATED
Blanco Brillo RAL 9010	White RAL9010
Negro Mate	Mat Black
ANODIZADOS	ANODIZED
Plata Mate	Natural Anodized
Natural	Natural
MELAMINA	MELAMINE
Blanco Rebornizable	White
MADERA	NATURAL WOOD
Roble Francés	Oak

U19mm.

PERFIL U 19mm.
19mm. U PROFILE



Longitud / Length : 6 m.

REF.

1522.L.B

1522.L.NM

REF.

1522.A.PM

-

REF.

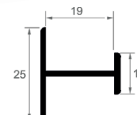
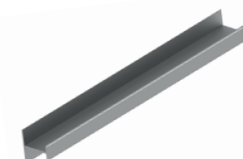
1522.M.MR

REF.

1522.C.RB

H19mm.

PERFIL H 19mm.
19mm. H PROFILE



Longitud / Length : 6 m.

REF.

1580.A.PM

1580.L.NM

REF.

1580.A.PM

-

REF.

1580.M.MR

REF.

1580.C.RB

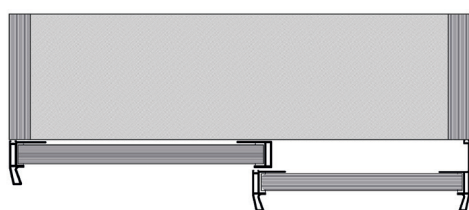
ACABADOS

FINISHINGS

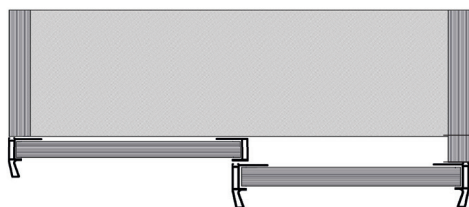
LACADOS	COATED
Blanco Brillo RAL 9010	White RAL9010
Negro Mate	Mat Black
ANODIZADOS	ANODIZED
Plata Mate	Natural Anodized
Natural	Natural
MELAMINA	MELAMINE
Blanco Rebornizable	White
MADERA	NATURAL WOOD
Roble Francés	Oak

KIT PUERTAS 19mm.

19mm. SLIDING DOOR KIT



(PI) Puerta Interior \ Inner Door

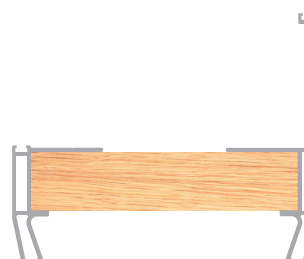


(PE) Puerta Exterior \ Outer Door



34mm

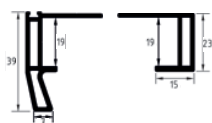
(PET) Puerta Exterior Tapaluz
Extra-Outer Door



KIT PI 19mm.

KIT PUERTA INTERIOR 19mm.
19mm. INNER DOOR SET

Espesor tablero 19mm
19mm. Thickness board



Contenido Kit

- 1x2,7m. Tirador torino interior
- 1x2,7m. Tirador torino exterior
- 2x2,7m. Cepillo 4x6

Kit Elements

- 1x2,7m. Torino Inner handle profile
- 1x2,7m. Torino Outer handle profile
- 2x2,7m. 4x6 Brush

REF.

827KPI.L.B

827KPI.L.NM

REF.

827KPI.APM

-

REF.

827KPI.M.MR

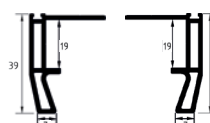
REF.

827KPI.C.RB

KIT PE 19mm.

KIT PUERTA EXTERIOR 19mm.
19mm. OUTER DOOR SET

Espesor tablero 19mm
19mm. Thickness board



Contenido Kit

- 2x2,7m. Tirador Torino exterior
- 2x2,7m. Cepillo 4x6

Kit Elements

- 2x2,7m. Torino Inner handle profile
- 2x2,7m. 4x6 Brush

REF.

837KPE.L.B

837KPE.L.NM

REF.

837KPE.APM

-

REF.

837KPE.M.MR

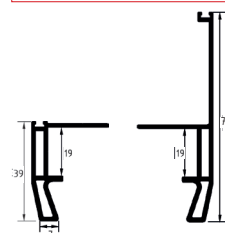
REF.

837KPE.C.RB

KIT PET 19mm.

KIT PUERTA EXT. CON TAPALUZ
19mm. EXTRA-OUTER DOOR SET

Espesor tablero 19mm
19mm. Thickness board



Contenido Kit

- 1x2,7m. Tirador torino exterior tapaluz
- 1x2,7m. Tirador torino exterior
- 2x2,7m. Cepillo 4x6

Kit Elements

- 1x2,7m. Torino Extra-Outer handle profile
- 1x2,7m. Torino Outer handle profile
- 2x2,7m. 4x6 Brush

REF.

847KPET.L.B

837KPET.L.NM

REF.

847KPET.APM

-

REF.

847KPET.M.MR

REF.

847KPET.C.RB

ACABADOS	FINISHINGS
LACADOS	COATED
Blanco Brillo RAL 9010	White RAL9010
Negro Mate	Mat Black
ANODIZADOS	ANODIZED
Plata Mate	Natural Anodized
Natural	Natural
MELAMINA	MELAMINE
Blanco Rebornizable	White
MADERA	NATURAL WOOD
Roble Francés	Oak

PERFILERIA DE ALUMINIO PARA TABLERO 10-11mm 10-11mm. AND 4-5mm. GLASS THICKNESS BOARD HANDLE PROFILES

6m. Condiciones especiales de envío
6m. Special shipping conditions

T. I. 10-11mm.
TIRADOR INT. 10-11mm.
10-11mm. INNER
HANDLE PROFILE

T. EX. 10-11mm.
TIRADOR EXT. 10-11mm.
10-11mm. OUTER
HANDLE PROFILE

T. EX. 10-11mm.
TIRADOR EXT. TAPALUZ 10-11mm.
10-11mm. EXTRA OUTER
HANDLE PROFILE

FALDÓN
FALDÓN SUP.-INF.
UPPER-LOWER
CONNECTION PROFILE

Espesor tablero 10-11mm
Vidrio 4-5mm

Espesor tablero 10-11mm
Vidrio 4-5mm

Espesor tablero 10-11mm
Vidrio 4-5mm

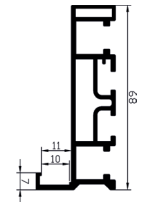
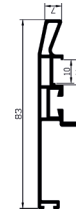
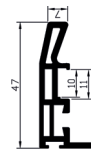
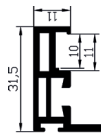
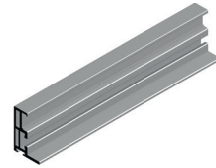
Espesor tablero 10-11mm
Vidrio 4-5mm

10-11mm. Thickness board
4-5mm. Glass panel

10-11mm. Thickness board
4-5mm. Glass panel

10-11mm. Thickness board
4-5mm. Glass panel

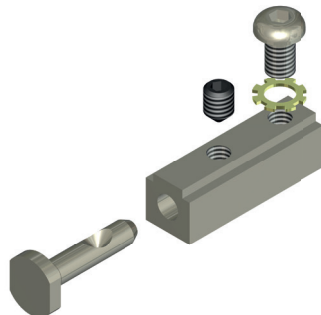
10-11mm. Thickness board
4-5mm. Glass panel



ACABADOS	FINISHINGS	Longitud / Length : 5,4 m.	Longitud / Length : 5,4 m.	Longitud / Length : 5,4 m.	Longitud / Length : 4,81 m.
ANODIZADOS	ANODIZED	REF.	REF.	REF.	REF.
Plata Mate	Natural Anodized	826.A.PM	836.A.PM	846.A.PM	856.A.PM
Natural	Natural	-	-	-	-
Transparente	Transparent	-	-	-	-

TENSOR UNIÓN PERFIL VERTICAL CON HORIZONTAL

PERPENDICULAR JOINT



REF.
869TU

HERRAJE UNIÓN FALDÓN SUPERIOR - INFERIOR

ASSEMBLY NUTS AND SCREWS - ROLLER TO CONNECTION PROFILE



x12 10x10x4 M4



x14 10x10x10 M4



x14 DIN 7991 M4x12



x12 DIN 7991 M4x8

Conjunto para 1 puerta interior y 1 exterior
Set for 1 inner and 1 outer door

REF.
859KHA

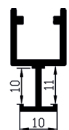
Y VIDRIO 4-5mm. (con reductor)

H 10-11mm.

PERFIL H 10-11mm.
10-11mm. H PROFILE

Espesor tablero 10-11mm
Vidrio 4-5mm

10-11mm. Thickness board
4-5mm. Glass panel



Longitud / Length : 4,81 m.

REF.

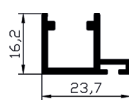
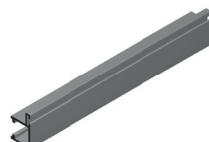
866.A.PM

TENSOR V/M

TENSOR VIDRIO MADERA
STRAIGHTENER PROFILE

Espesor tablero 10-11mm
Vidrio 4-5mm

10-11mm. Thickness board
4-5mm. Glass panel



Longitud / Length : 4,81 m.

REF.

868.A.PM

HETTICH TOP LINE XL HETTICH TOP LINE XL

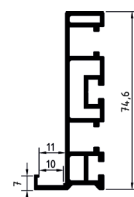
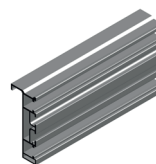
FALDÓN HT

FALDÓN SUP.-INF. HT
HT UPPER-LOWER
CONNECTION PROFILE

Hettich TOP LINE XL

Espesor tablero 10-11mm
Vidrio 4-5mm

10-11mm. Thickness board
4-5mm. Glass panel



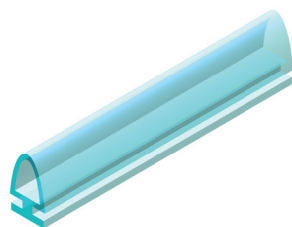
Longitud / Length : 6 m.

REF.

856H.A.PM

GOMA REDUCTORA PARA PERFIL TENSOR VIDRIO 4-5mm.

PLASTIC PROFILE FOR 4-5mm. GLASS STRAIGHTENER



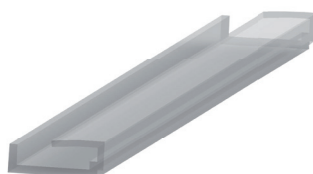
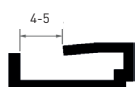
REF.

869GRTC

Rollo 250m
250m Roll

PERFIL PVC REDUCTOR PARA VIDRIO 4-5mm.

PVC GASKET FOR 4-5mm. GLASS



REF.

869PR

DESCRIPCION / DESCRIPTION

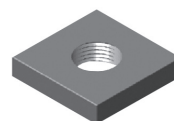
2,7m

869PR.48

4,81m

HERRAJE UNIÓN HETTICH TOP LINE XL-FALDÓN HT

HETTICH TL XL ASSEMBLY NUTS FOR HT UPPER & LOWER
CONNECTION PROFILE



x32 10x10 M5



x32 DIN 7991 M5x10

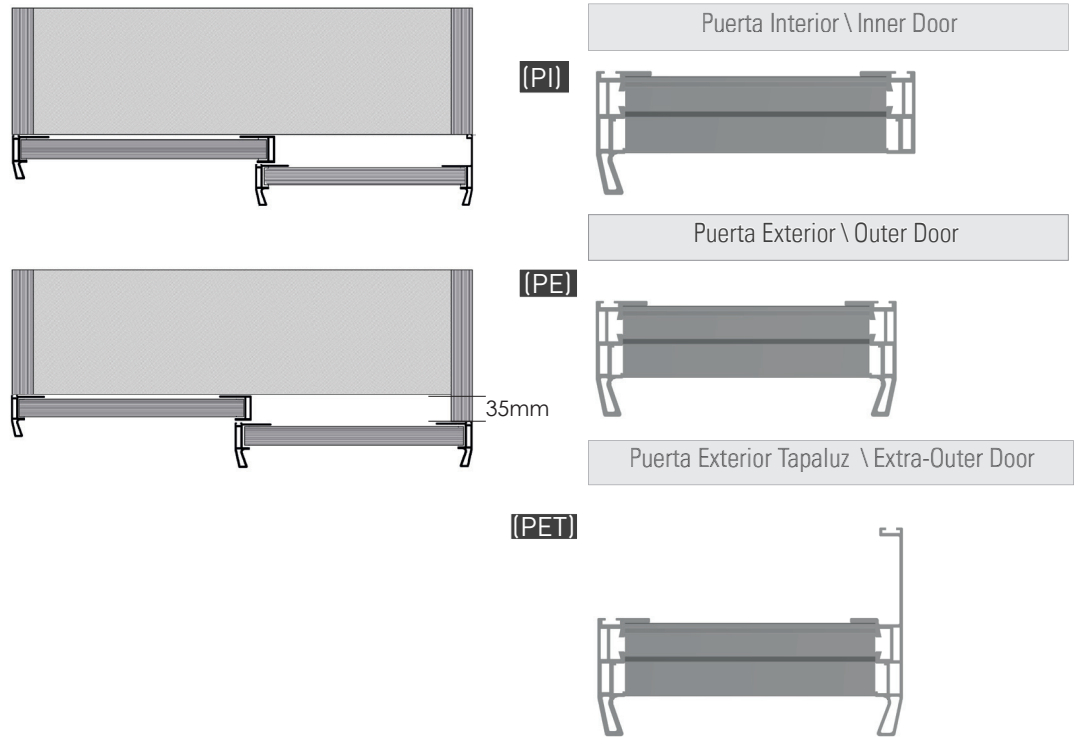
Conjunto para 1 puerta interior y 1 exterior
Set for 1 inner and 1 outer door

REF.

855KHH

KIT PUERTAS 10-11mm. Y VIDRIO 4-5mm. (con reductor)

10-11mm. AND 4-5mm. GLASS SLIDING DOOR KIT

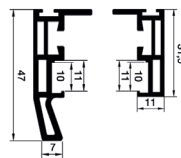


KIT PI

KIT PUERTA INTERIOR
INNER DOOR SET

Espesor tablero 10-11mm
Vidrio 4-5mm

10-11mm. Thickness board
4-5mm. Glass panel



Contenido Kit

- 1x2,7m. Tirador torino interior
- 1x2,7m. Tirador torino exterior
- 2x2,7m. Reductor PVC vidrio 4-5mm.
- 2x2,7m. Cepillo 7x6

Kit Elements

- 1x2,7m. Torino Inner handle profile
- 1x2,7m. Torino Outer handle profile
- 2x2,7m. PVC Gasket 4-5mm. glass
- 2x2,7m. 7x6 Brush

REF.

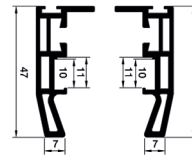
825KPI.APM

KIT PE

KIT PUERTA EXTERIOR
OUTER DOOR SET

Espesor tablero 10-11mm
Vidrio 4-5mm

10-11mm. Thickness board
4-5mm. Glass panel



Contenido Kit

- 2x2,7m. Tirador Torino exterior
- 2x2,7m. Reductor PVC vidrio 4-5mm.
- 2x2,7m. Cepillo 7x6

Kit Elements

- 2x2,7m. Torino Inner handle profile
- 2x2,7m. PVC Gasket 4-5mm. glass
- 2x2,7m. 7x6 Brush

REF.

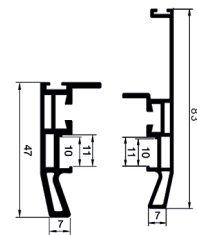
835KPE.APM

KIT PET

KIT PUERTA EXT. CON TAPALUZ
EXTRA-OUTER DOOR SET

Espesor tablero 10-11mm
Vidrio 4-5mm

10-11mm. Thickness board
4-5mm. Glass panel



Contenido Kit

- 1x2,7m. Tirador torino exterior tapaluz
- 1x2,7m. Tirador torino exterior
- 2x2,7m. Reductor PVC vidrio 4-5mm.
- 2x2,7m. Cepillo 7x6

Kit Elements

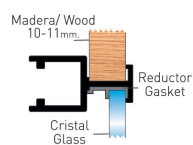
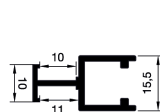
- 1x2,7m. Torino Extra-Outer handle profile
- 1x2,7m. Torino Outer handle profile
- 2x2,7m. PVC Gasket 4-5mm. glass
- 2x2,7m. 7x6 Brush

REF.

845KPET.APM

KIT H

KIT H (2un.)
H SET (2un.)



Contenido Kit

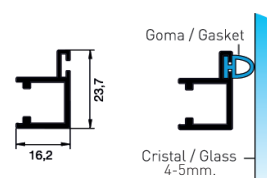
2un.	Perfil H
4un.	Reductor PVC vidrio 4-5mm.
4un.	Tensor unión perfiles + tornillos

Kit Elements

2un.	H Profile
4un.	PVC Gasket 4-5mm. glass
4un.	Perpendicular Joint + screws

KIT TENSOR VIDRIO

KIT TENSOR VIDRIO (2un.)
STRAIGHTENER GLASS SET (2un.)



Contenido Kit

2un.	Perfil tensor vidrio
1un.	Goma reductora Tensor Vidrio
4un.	Tensor unión perfiles + tornillos

Kit Elements

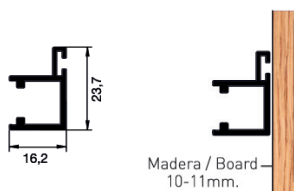
2un.	Straightener profile for glass
1un.	Gasket for 4-5mm. Glass
4un.	Perpendicular Joint + screws

ACABADOS	FINISHINGS	KIT 1,2 m.	KIT 1,6 m.	KIT 1,2 m.	KIT 1,6 m.
ANODIZADOS	ANODIZED	REF.	REF.	REF.	REF.
Plata Mate	Natural Anodized	865KH.APM1.2	865KH.APM1.6	866KTV.APM1.2	866KTV.APM1.6
Natural	Natural	-	-	-	-

KIT HETTICH TOP LINE XL KIT HETTICH TOP LINE XL

KIT TENSOR MADERA

KIT TENSOR MADERA (2un.)
STRAIGHTENER WOOD SET (2un.)



Contenido Kit

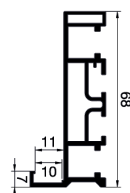
2un.	Perfil tensor madera
4un.	Tensor unión perfiles + tornillos

Kit Elements

2un.	Straightener profile for wood
4un.	Perpendicular Joint + screws

KIT FALDÓN

KIT FALDÓN SUPERIOS / INFERIOR
UPPER & LOWER CONNECTION PROFILE



Contenido Kit

2un.	Faldón superior e inferior
2un.	Reductor PVC vidrio 4-5mm.
8un.	Tensor unión perfiles + tornillos

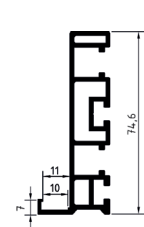
Kit Elements

2un.	Upper and lower connection profile
2un.	PVC Gasket 4-5mm. glass
8un.	Perpendicular Joint + screws

Screws and nuts to joint the rollers

KIT FALDÓN HT

KIT FALDÓN HT SUPERIOR E INFERIOR
HT UPPER & LOWER CONNECTION PROFILE



Contenido Kit

2un.	Faldón superior e inferior
2un.	Reductor PVC vidrio 4-5mm.
8un.	Tensor unión perfiles + tornillos

Kit Elements

2un.	Upper and lower connection profile
2un.	PVC Gasket 4-5mm. glass
8un.	Perpendicular Joint + screws

SOLO TOP LINE XL DE HETTICH
ONLY FOR HETTICH TOP LINE XL

ACABADOS	FINISHINGS	KIT 1,2 m.	KIT 1,6 m.	KIT 1,2 m.	KIT 1,6 m.	KIT 1,2 m.	KIT 1,6 m.
ANODIZADOS	ANODIZED	REF.	REF.	REF.	REF.	REF.	REF.
Plata Mate	Natural Anodized	867KTM.APM1.2	867KTM.APM1.6	855KF.APM1.2	855KF.APM1.6	855KFH.APM1.2	855KFH.APM1.6
Natural	Natural	-	-	-	-	-	-

TORINO

INSTRUCCIONES DE MONTAJE

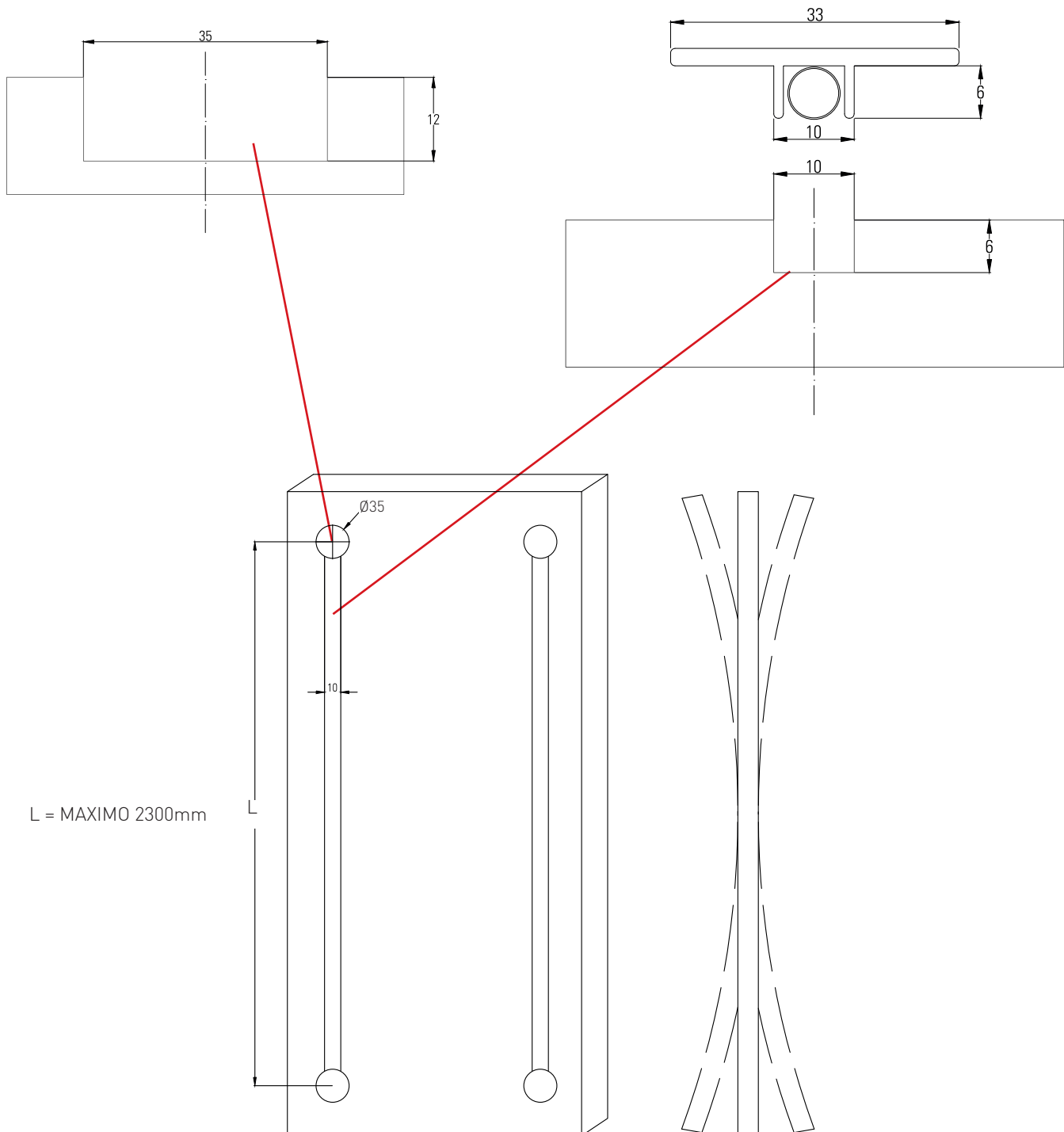
ASSEMBLY INSTRUCTIONS

ADINOR

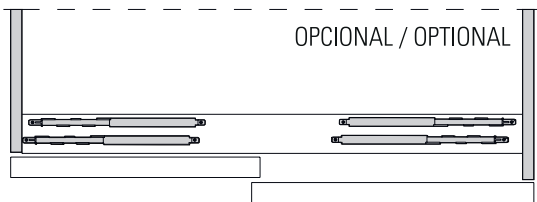
DESCÁRGATE LAS INSTRUCCIONES COMPLETAS EN:
www.adinor.info/instrucciones-de-montaje
(Instrucciones montaje SISTEMA TORINO)

DOWNLOAD THE COMPLETE ASSEMBLY INSTRUCTIONS
www.adinor.info/instrucciones-de-montaje
(TORINO)

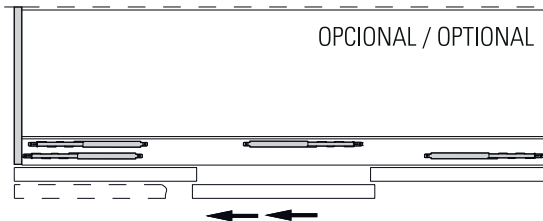
MONTAJE ENDEREZADOR PUERTA DOOR STRAIGHTENER ASSEMBLY



Dos Puertas / Two Doors

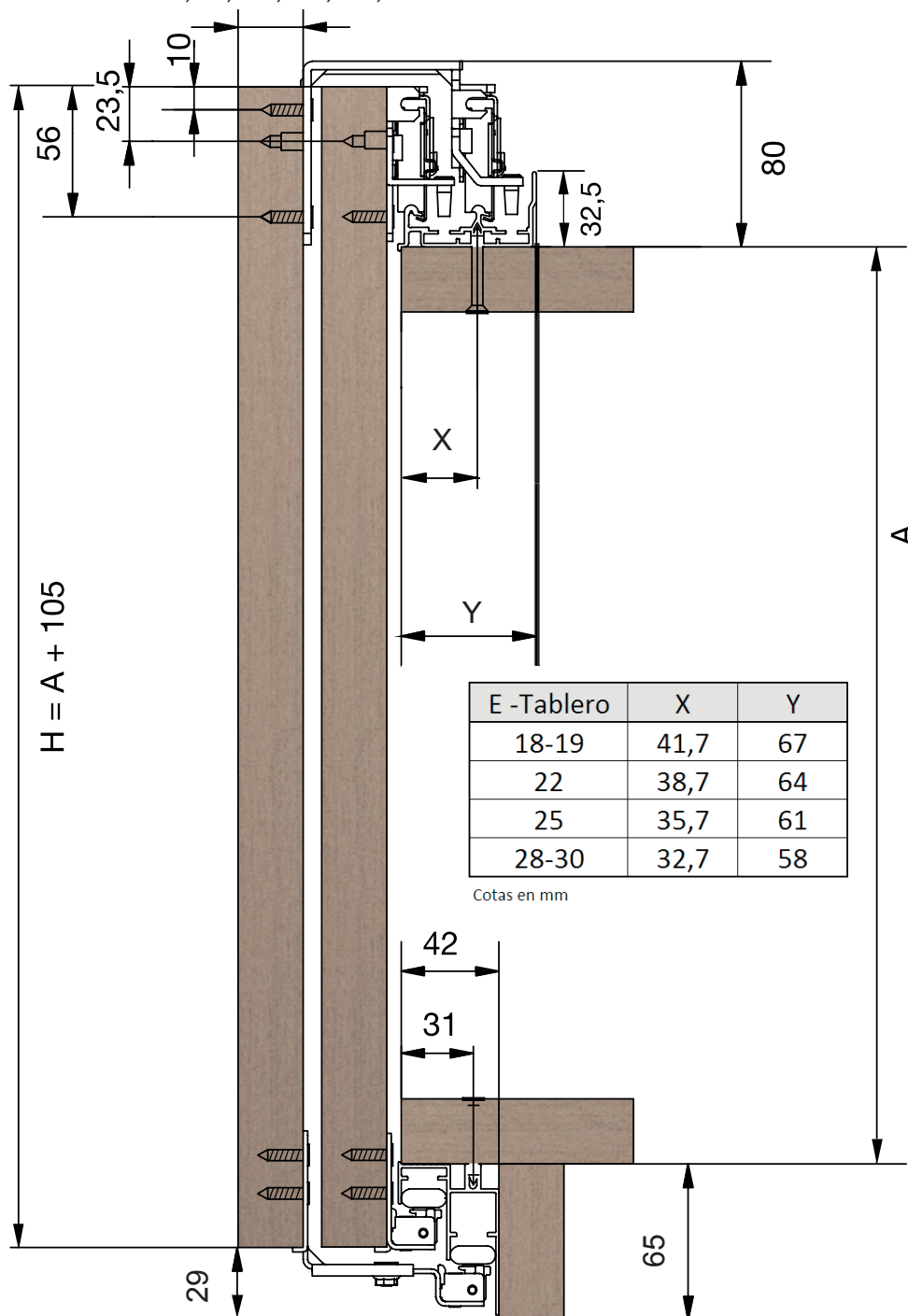


Tres Puertas / Three Doors



Grueso puerta / Chip Board Thickness

18,19, 22, 25, 28, 30



TORINO

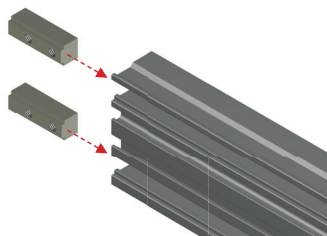
INSTRUCCIONES DE MONTAJE

ASSEMBLY INSTRUCTIONS

ADINOR

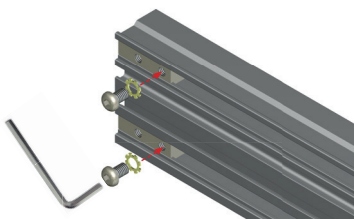


1

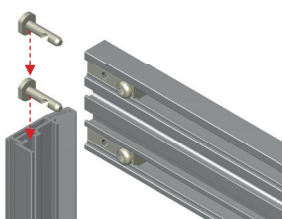


2

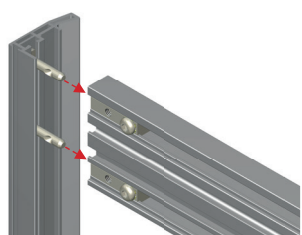
Enrasar con el perfil horizontal.
Perpendicular joint must not protrude out of the horizontal profile.



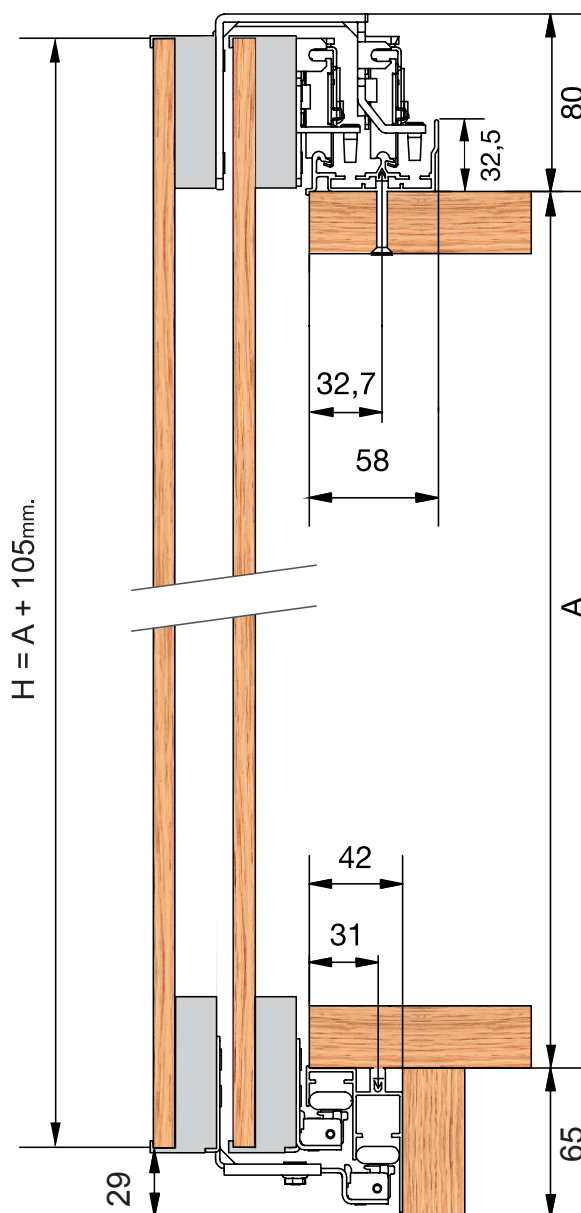
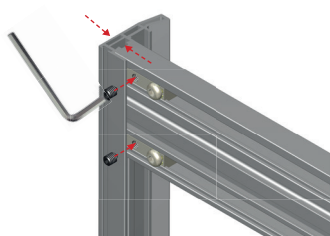
3



4



5



Cálculo ancho de puertas / Board width
Armario 2 puertas / 2 doors wardrobe

$$P = \frac{L}{2} + 5mm.$$

Anchura panel Cristal
Glass Width

$$P = 16mm.$$

Cálculo ancho de puertas / Board width
Armario 3 puertas / 3 doors wardrobe

$$P = \frac{L}{3} + 7mm.$$

Anchura panel Madera
Board Width

$$P = 14mm.$$

Cálculo ancho de puertas / Board width
Armario 4 puertas / 4 doors wardrobe

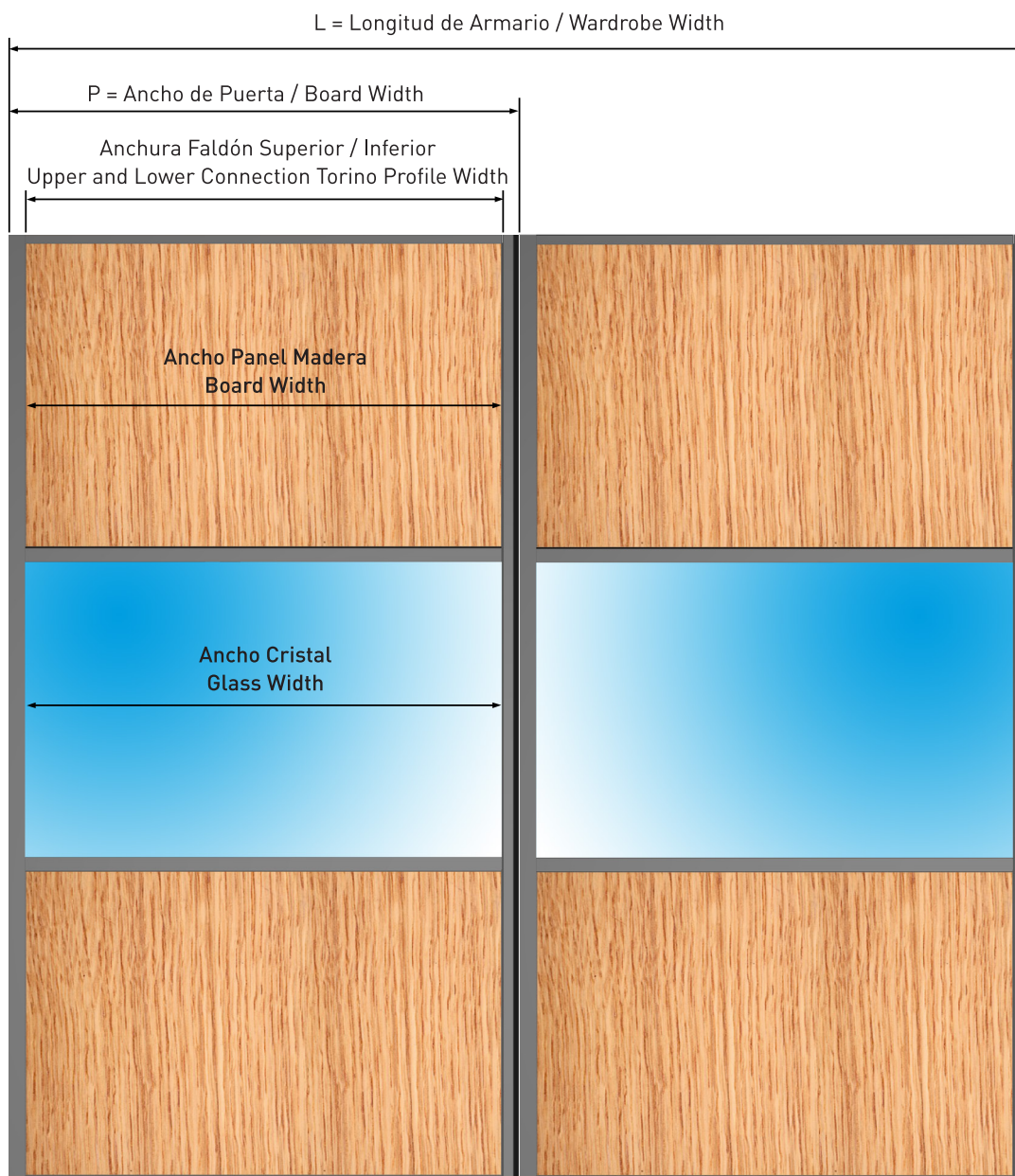
$$P = \frac{L}{4} + 7mm.$$

Longitud Perfil Faldón Superior / Inferior
Upper and Lower Connection Torino Profile Width

Longitud Perfil H
Torino H Profile Width

Longitud Tensor Madera / Cristal
Straightener Torino Glass / Wood Profile Width

$$P = 21mm.$$



MUNICH BZ











CONCEPTO FUNCIONAL

Este tipo de construcción permite que las puertas puedan quedar alineadas en un mismo plano, creando un efecto de continuidad visual en las puertas.

Permiten fabricar frentes de armario de gran amplitud donde el herraje queda oculto sin que se pueda apreciar ningún sistema de sujeción.

Una de las mayores ventajas de este herraje es la poca profundidad que restamos al armario. Únicamente se descuenta el espesor de la puerta que puede ir de 19 a 45 mm.

SUMMARY

This system allows keeping the hanging doors lined up on the same plane. It also permits to manufacture closets of any size, where the fittings are hidden and the subjection can't be seen.

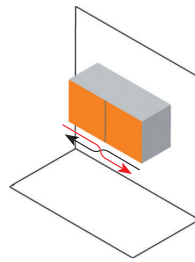
One of the great advantages of this system is that it takes very little depth from the closet. We could say than no more than the thickness of the door that is between 19 to 45 mm.

MUNICH BZ

ADINOR

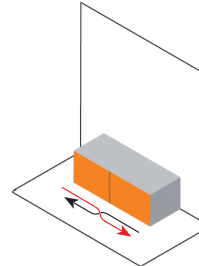
S 20 BZ

S 20 KG. MUEBLE ALTO
20 KG. WALL CUPBOARD



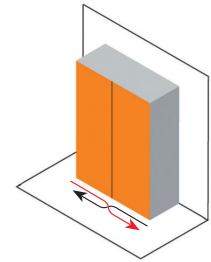
S 20 BZ

S 20 KG. MUEBLE BAJO
20 KG. FLOOR CUPBOARD



M 35 BZ

M 35 KG.
M 35 KG.



Medidas \ Measures

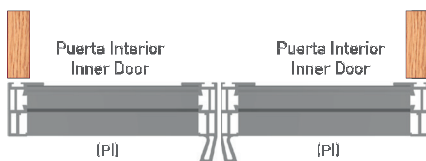
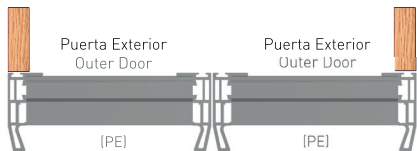
1200 mm.
1400 mm.
1600 mm.
1800 mm.
2000 mm.
2200 mm.
2400 mm.
2600 mm.
2800 mm.
3000 mm.
3200 mm.
3400 mm.
3600 mm.
3800 mm.
4000 mm.

REF.
MUNBS20A.1200
+ MUNBS20A.1400
+ MUNBS20A.1600
MUNBS20A.1800
+ MUNBS20A.2000
+ MUNBS20A.2200
MUNBS20A.2400
+ MUNBS20A.2600
+ MUNBS20A.2800
+ MUNBS20A.3000
-
-
-
-

REF.
MUNBS20B.1200
+ MUNBS20B.1400
+ MUNBS20B.1600
MUNBS20B.1800
+ MUNBS20B.2000
+ MUNBS20B.2200
MUNBS20B.2400
+ MUNBS20B.2600
+ MUNBS20B.2800
+ MUNBS20B.3000
-
-
-
-

REF.
MUNBM35.1200
+ MUNBM35.1400
+ MUNBM35.1600
MUNBM35.1800
+ MUNBM35.2000
+ MUNBM35.2200
MUNBM35.2400
+ MUNBM35.2600
+ MUNBM35.2800
+ MUNBM35.3000
+ MUNBM35.3200
+ MUNBM35.3400
+ MUNBM35.3600
+ MUNBM35.3800
+ MUNBM35.4000

+ BAJO PEDIDO / UNDER REQUEST



KIT PI

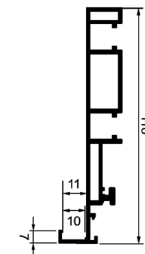
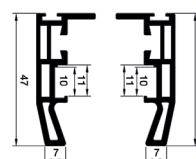
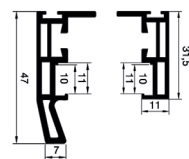
KIT PUERTA INTERIOR
INNER DOOR SET

KIT PE

KIT PUERTA EXTERIOR
OUTER DOOR SET

KIT FALDÓN M35-M50

KIT FALDÓN SUPERIOR / INFERIOR M35-M50
M35-M50 UPPER & LOWER CONNECTION PROFILE



Contenido Kit

- 1x2,7m. Tirador torino interior
- 1x2,7m. Tirador torino exterior
- 2x2,7m. Reductor PVC vidrio 4-5mm.
- 2x2,7m. Cepillo 7x6

Kit Elements

- 1x2,7m. Torino Inner handle profile
- 1x2,7m. Torino Outer handle profile
- 2x2,7m. PVC Gasket 4-5mm. glass
- 2x2,7m. 7x6 Brush

Contenido Kit

- 2x2,7m. Tirador Torino exterior
- 2x2,7m. Reductor PVC vidrio 4-5mm.
- 2x2,7m. Cepillo 7x6

Kit Elements

- 2x2,7m. Torino Inner handle profile
- 2x2,7m. PVC Gasket 4-5mm. glass
- 2x2,7m. 7x6 Brush

Contenido Kit

- 2un. Faldón superior e inferior BZ
- 2un. Reductor PVC vidrio 4-5mm.
- 8un. Tensor unión perfiles + tornillos

Kit Elements

- 2un. BZUpper and lower connection profile
- 2un. PVC Gasket 4-5mm. glass
- 8un. Perpendicular Joint + screws

ACABADOS

FINISHINGS

ANODIZADOS

ANODIZED

Plata Mate

Natural Anodized

REF.

825KPI.APM

REF.

835KPE.APM

KIT 1,2 m.

REF.

MUNKF.APM1.2

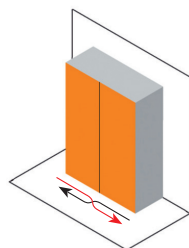
KIT 1,6 m.

REF.

MUNKF.APM1.6

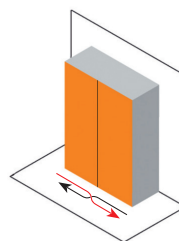
M 50 BZ

M 50 KG.
M 50 KG.



M 70 BZ

M 70 KG.
M 70 KG.



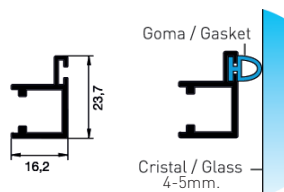
Medidas \ Measures

	REF.	REF.
1100-1399 mm.	-	-
1400-1599 mm.	-	-
1600-1799 mm.	+ MUNBM50.1600	+ MUNBL70.1600
1800-1999 mm.	MUNBM50.1800	MUNBL70.1800
2000-2199 mm.	MUNBM50.2000	MUNBL70.2000
2200-2399 mm.	+ MUNBM50.2200	+ MUNBL70.2200
2400-2599 mm.	MUNBM50.2400	MUNBL70.2400
2600-2799 mm.	+ MUNBM50.2600	+ MUNBL70.2600
2800-2999 mm.	MUNBM50.2800	MUNBL70.2800
3000-3199 mm.	+ MUNBM50.3000	+ MUNBL70.3000
3200-3399 mm.	+ MUNBM50.3200	MUNBL70.3200
3400-3599 mm.	+ MUNBM50.3400	+ MUNBL70.3400
3600-3799 mm.	+ MUNBM50.3600	+ MUNBL70.3600
3800-3999 mm.	+ MUNBM50.3800	+ MUNBL70.3800

+ BAJO PEDIDO / UNDER REQUEST

KIT TENSOR VIDRIO

KIT TENSOR VIDRIO (2un.)
STRAIGHTENER GLASS SET (2un.)



Contenido Kit

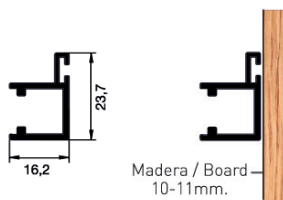
2un.	Perfil tensor vidrio
1un.	Goma reductora Tensor Vidrio
4un.	Tensor unión perfiles + tornillos

Kit Elements

2un.	Straightener profile for glass
1un.	Gasket for 4-5mm. Glass
4un.	Perpendicular Joint + screws

KIT TENSOR MADERA

KIT TENSOR MADERA (2un.)
STRAIGHTENER WOOD SET (2un.)



Contenido Kit

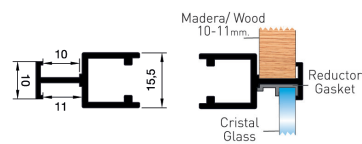
2un.	Perfil tensor madera
4un.	Tensor unión perfiles + tornillos

Kit Elements

2un.	Straightener profile for wood
4un.	Perpendicular Joint + screws

KIT H

KIT H (2un.)
H SET (2un.)



Contenido Kit

2un.	Perfil H
4un.	Reductor PVC vidrio 4-5mm.
4un.	Tensor unión perfiles + tornillos

Kit Elements

2un.	H Profile
4un.	PVC Gasket 4-5mm. glass
4un.	Perpendicular Joint + screws

KIT 1,2 m.

REF.

866KTV.APM1.2

KIT 1,6 m.

REF.

866KTV.APM1.6

KIT 1,2 m.

REF.

867KTM.APM1.2

KIT 1,6 m.

REF.

867KTM.APM1.6

KIT 1,2 m.

REF.

865KH.APM1.2

KIT 1,6 m.

REF.

865KH.APM1.6

MUNICH BZ

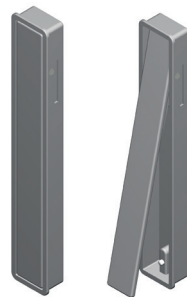
COMPLEMENTOS

COMPLEMENTS

ADINOR

TIRADOR DE EMBUTIR 150x20mm.

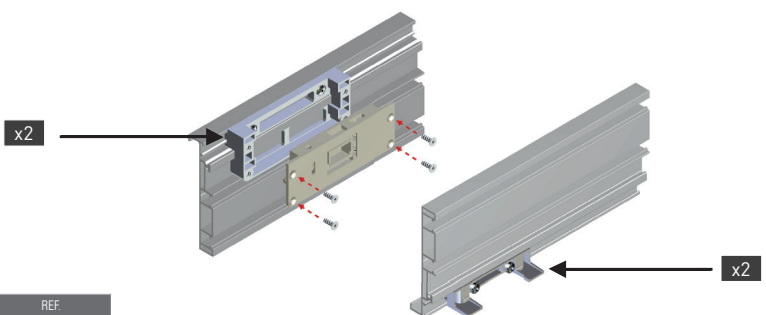
150x20mm. HANDLE



REF.
MUN800

HERRAJE FIJACIÓN PERFILERÍA A M-35 / M-50 MUNICH BZ

ASSEMBLY BRACKET FOR M-35 / M-50 MUNICH BZ UPPER & LOWER CONNECTION PROFILE



REF.
MUNM35-50T

TIRADOR ASA

HANDLE



REF.
MUN810

**INSTRUCCIONES
DE MONTAJE**
ASSEMBLY INSTRUCTIONS

DESCÁRGATE LAS INSTRUCCIONES COMPLETAS EN:
www.adinor.info/instrucciones-de-montaje
(Instrucciones montaje SISTEMA MUNICH BZ)

DOWNLOAD THE COMPLETE ASSEMBLY INSTRUCTIONS
www.adinor.info/instrucciones-de-montaje
(MUNICH BZ)