

Date:

Remarks:


Client's name:

Ref.:

1.-SKY TRACKS

1.1-TYPE OF TRACKS (mark with an X)

1.1.1 CEILING PLUS REF. SK111

 When two or more tracks are used the separation between them would be 5mm

1.1.2 PLASTERBOARD PLUS

INDIVIDUAL REF. SK113 

DOUBLE REF. SK1135 

1.1.3 PLASTER PLUS REMOVABLE

INDIVIDUAL REMOVABLE REF. SK.KGDCS.L. 

DOUBLE REMOVABLE REF. SK.KGDCD.L. 

TRIPLE REMOVABLE REF. SK.KGDCT.L. 

***Only in repaintable and white matt 9003

1.1.4 WALL PLUS REF. SK112



1.2-COLOUR (mark with an X)

SILVER MATT (A.PM) (Only for plasterboard plus)

MATT WHITE 9003 (L.BM) (For plasterboard plus and removable)

MATT BLACK (L.NM) (For plasterboard plus only)

REPAINTABLE (L.T) (For plasterboard plus and removable)

1.3-TRACK ACCESSORIES (mark with an X) QUANTITY

Measure Quantity

2M

3M

4M

6M

1.4-TRACK ACCESSORIES (mark with an X) QUANTITY

Accessory

Quantity

CEILING HANGER BRACKET FOR REMOVABLE PLASTERBOARD TRACK*¹ SK.ST.120

SIDE CAPS*² SK.COV.112.

*1: Place 1 every 400mm in the single removable track and 2 every 400mm in the double removable track

*2: For wall plus tracks

1.5-SKY ROLLERS

Rollers

Quantity

KIT SKY WOOD ROLLER 120Kg RECOMMENDED FOR ALUMINIUM PA DOOR (1)

PA ALUMINIUM DOOR (1Unit per door) KIT SKY WOOD ROLLER 60Kg

1.6-SKY SOFT-CLOSING SYSTEM (mark with an X) QUANTITY

Model

Quantity

KIT SKY 60Kg SOFT-CLOSING (SK.AMORT.60)

KIT SKY SOFT-CLOSING 80Kg (SK.AMORT.80)

KIT SKY SOFT-CLOSING 100Kg (SK.AMORT.100)

KIT SKY SOFT-CLOSING 120Kg (SK.AMORT.120)

KIT SKY BIDIRECTIONAL SOFT-CLOSING 60Kg (SK.AMBID.60)

KIT BIDIRECTIONAL SOFT-CLOSING SKY 80Kg (SK.AMBID.80)

KIT BIDIRECTIONAL SOFT-CLOSING SKY 100Kg (SK.AMBID.100)

KIT SKY BIDIRECTIONAL SOFT-CLOSING 120Kg (SK.AMBID.120)

KIT SKY **REMOVABLE** SOFT-CLOSING 60Kg (SKGD.AMORT.60)

KIT SKY **REMOVABLE** SOFT-CLOSING 80Kg (SKGD.AMORT.80)

KIT SKY **REMOVABLE** SOFT-CLOSING 100Kg (SKGD.AMORT.100)

KIT SKY **REMOVABLE** SOFT-CLOSING 120Kg (SKGD.AMORT.120)

KIT SKY **REMOVABLE** BIDIRECTI SOFT-CLOSING 60Kg (SKGD.AMBID.60)

KIT SKY **REMOVABLE** BIDIRECT. SOFT-CLOSING 80Kg (SKGD.AMBID.80)

KIT SKY **REMOVABLE** BIDIRECT SOFT-CLOSING 100Kg (SKGD.AMBID.100)

KIT SKY **REMOVABLE** BIDIRECT SOFT-CLOSING 120Kg (SKGD.AMBID.120)

The standard SOFT-CLOSING SYSTEM (Kit 60, 80, 100, 120Kg) can be placed in the following positions 1 unit from a leaf width of 690mm and 2 units from 1080mm.

Bidirectional SOFT-CLOSINGS can be installed from a door's leaf width of 725m and can help soft-closing the leaf in both directions. From 1080mm leaf width and above, the use of 2 standard SOFT-CLOSINGS is recommended.

SKY PLAN DRAW

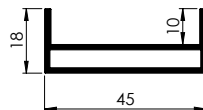
SLIDING DOOR- C
FIX PANNEL - F



FIXED OPTIONS

HANGING FROM THE SKY

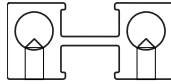
USING THE FIXED SYSTEM PA



REMARKS

2.1-DOOR FINISHING (mark with an X) QUANTITY

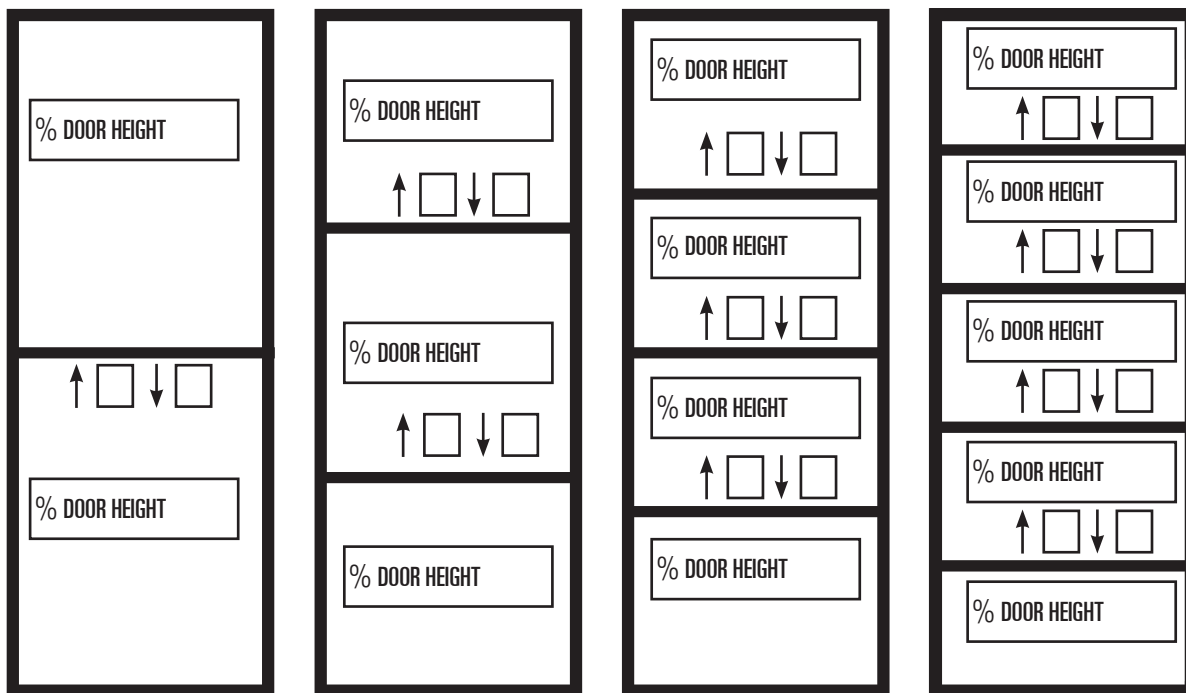
Finishing	Quantity
<input type="checkbox"/> MATT SILVER (A.PM)	<input type="checkbox"/>
<input type="checkbox"/> MATT WHITE 9003 (L.BM)	<input type="checkbox"/>
<input type="checkbox"/> MATT BLACK TEXTURED (L.NMT)	<input type="checkbox"/>
<input type="checkbox"/> CORTEN STEEL (L.C)	<input type="checkbox"/>
<input type="checkbox"/> NATURAL OAK (C.RB)	<input type="checkbox"/>



2.2-KIT MACHINED PARTITION (PAH.)

INDICATE ON EACH JAPANESE IF THE SOCKET SCREWS GOES UP OR DOWN.

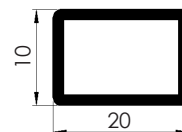
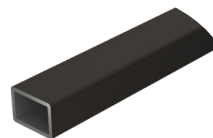
The glass shall have a thickness of 6mm



2.3-SELF-ADHESIVE TRIM PROFILE KIT (PAEVH.)

2.8m bars

Quantity



2.4-HANDLES (mark with an X) QUANTITY

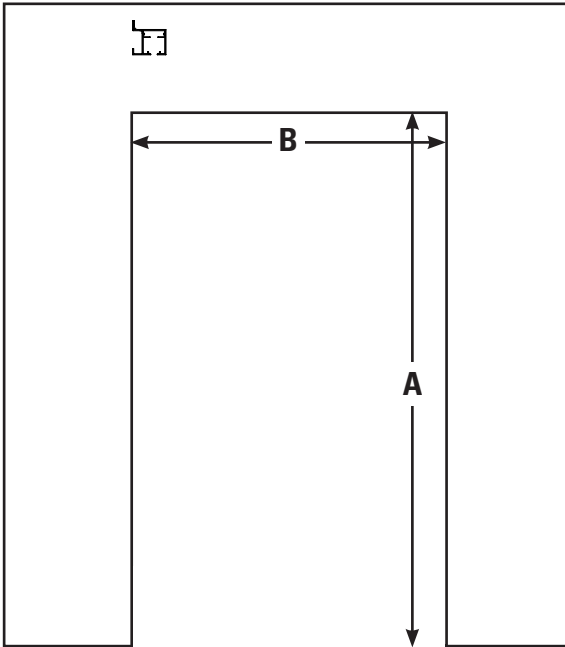
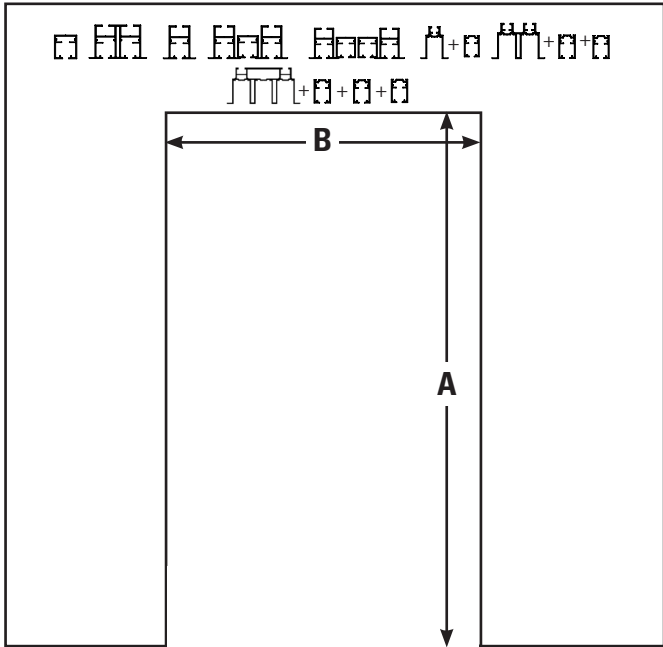
Handle	Quantity
<input type="checkbox"/> CAVE SELF-ADHESIVE HANDLE (PA.TCA.) 2 pcs.	<input type="checkbox"/>
<input type="checkbox"/> OAK ALU.CAVE SELF-ADHESIVE HANDLE. (PA.TCA.RB) 2 pcs.	<input type="checkbox"/>
<input type="checkbox"/> HOLE HANDLE (PA.TH.) 2 pcs.	<input type="checkbox"/>
<input type="checkbox"/> 30X180 HANDLE (PA.TR) 2 pcs.	<input type="checkbox"/>

2.5-ACCESSORIES (mark with X) QUANTITY

Accessory	Quantity
<input type="checkbox"/> FIX BOTTOM GUIDER PA PLUS (PA.G.L.)	<input type="checkbox"/>
<input type="checkbox"/> RIGHT DOOR PULLER (PA.AD.)	<input type="checkbox"/>
<input type="checkbox"/> LEFT DOOR PULLER (PA.AI.)	<input type="checkbox"/>
<input type="checkbox"/> PA DOOR LOCK + END COVERS (PA.CPL.)	<input type="checkbox"/>
<input type="checkbox"/> STRIKE PLATE (PA.CER.)	<input type="checkbox"/>

SKY FRONT VIEW

MARK OPENING HEIGHT GAP (CLEAR/AVAILABLE DISTANCE BETWEEN CEILING AND FLOOR) AND OPENING WIDTH GAP (CLEAR/AVAILABLE DISTANCE BETWEEN WALLS)



For the Wall Plus Track the requested measure is:
 HEIGHT: The distance from the bottom of the upper track to the floor.
 WIDTH: Door width (door must be a bit wider than Opening Width gap)

A - OPENING HEIGHT GAP

B - OPENING WIDTH GAP

A - HEIGHT

B - WIDTH

REMARKS