

# INSTRUCCIONES DE MONTAJE SISTEMA PA PLEGABLE 2 HOJAS

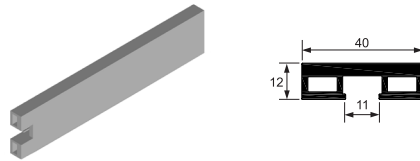
## PA BIFOLDING 2 DOOR SYSTEM ASSEMBLY INSTRUCTIONS

### ELEMENTOS DEL KIT SISTEMA PA PLEGABLE PIVOTANTE PARA DOS HOJAS PA BIFOLDING SYSTEM SET ELEMENTS

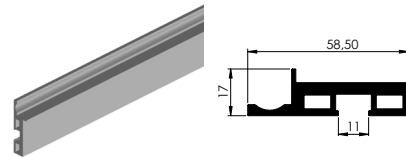
1 Kit de puerta PA con perfil vertical tirador

1 PA door with handle vertical profile set

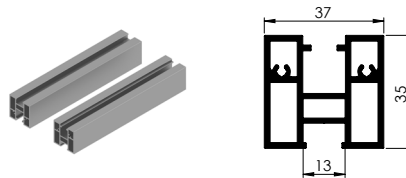
**Perfil vertical mecanizado**  
Machining vertical profile  
1 x 2,7m



**Perfil vertical tirador**  
Vertical profile  
1 x 2,7m



**Perfil horizontal**  
Horizontal profile  
2 x 1m



**Perfil reductor para vidrio 6mm**  
6mm transparent gasket  
2 x 2,7m  
2 x 1m



**Tornillos**  
Screws  
x 8



**Plantilla**  
Template  
x 1



**Broca, punta y avellanador**  
Drills

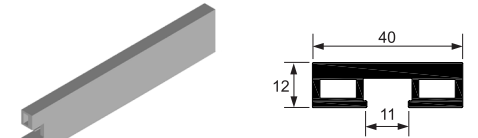


### ELEMENTOS DEL KIT SISTEMA PA PLEGABLE PIVOTANTE PARA DOS HOJAS PA BIFOLDING SYSTEM SET ELEMENTS

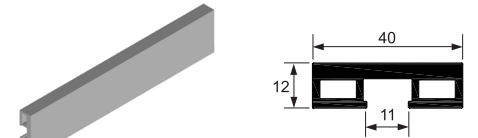
1 Kit de puerta PA

1 PA door set

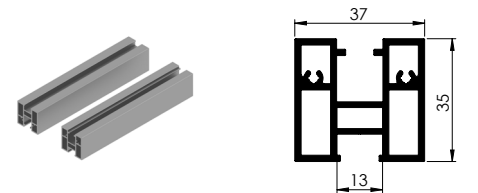
**Perfil vertical mecanizado**  
Machining vertical profile  
1 x 2,7m



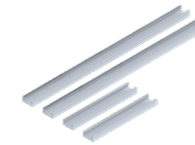
**Perfil vertical**  
Vertical profile  
1 x 2,7m



**Perfil horizontal**  
Horizontal profile  
2 x 1m



**Perfil reductor para vidrio 6mm**  
6mm transparent gasket  
2 x 2,7m  
2 x 1m



**Tornillos**  
Screws  
x 8



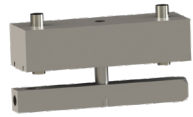
**Plantilla**  
Template  
x 1



**Broca, punta y avellanador**  
Drills



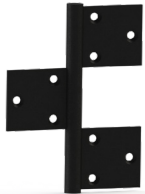
## KIT DE HERRAJE PARA PUERTA PLEGABLE PIVOTANTE (2 HOJAS) HARDWARE SET FOR PIVOT BIFOLD DOOR (2 DOORS)



**Herraje pivotante superior**  
Upper pivot hardware  
1 Und



**Herraje pivotante inferior**  
Lower pivot hardware  
1 Und



**Bisagra plegable**  
Bifold hinges  
4 Unds



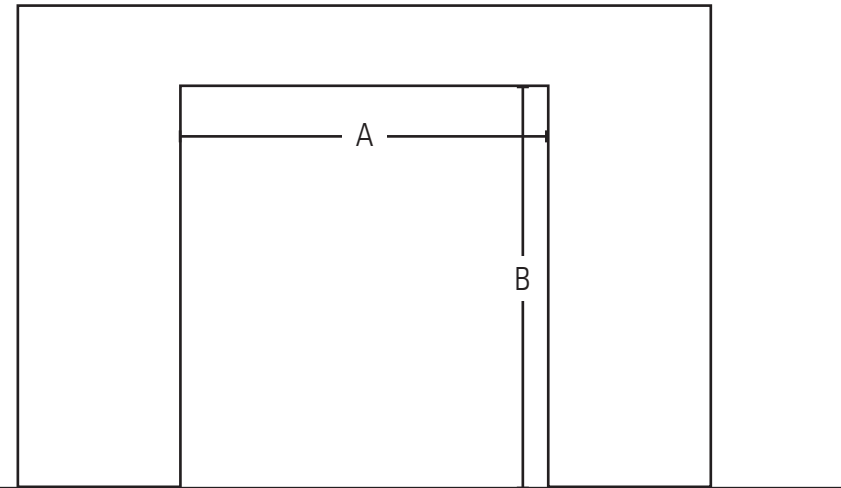
**Suplemento bisagra**  
Suplement for hinges  
12 Unds



**Carro con retrac**  
Retrac with roller  
1 Und

## CALCULO DE MEDIDAS PREVIO MEASSURES ESTIMATE

CALCULO DE LAS MEDIDAS TOTALES DE PUERTAS EN POSICION CERRADA  
DOOR TOTAL MEASURES



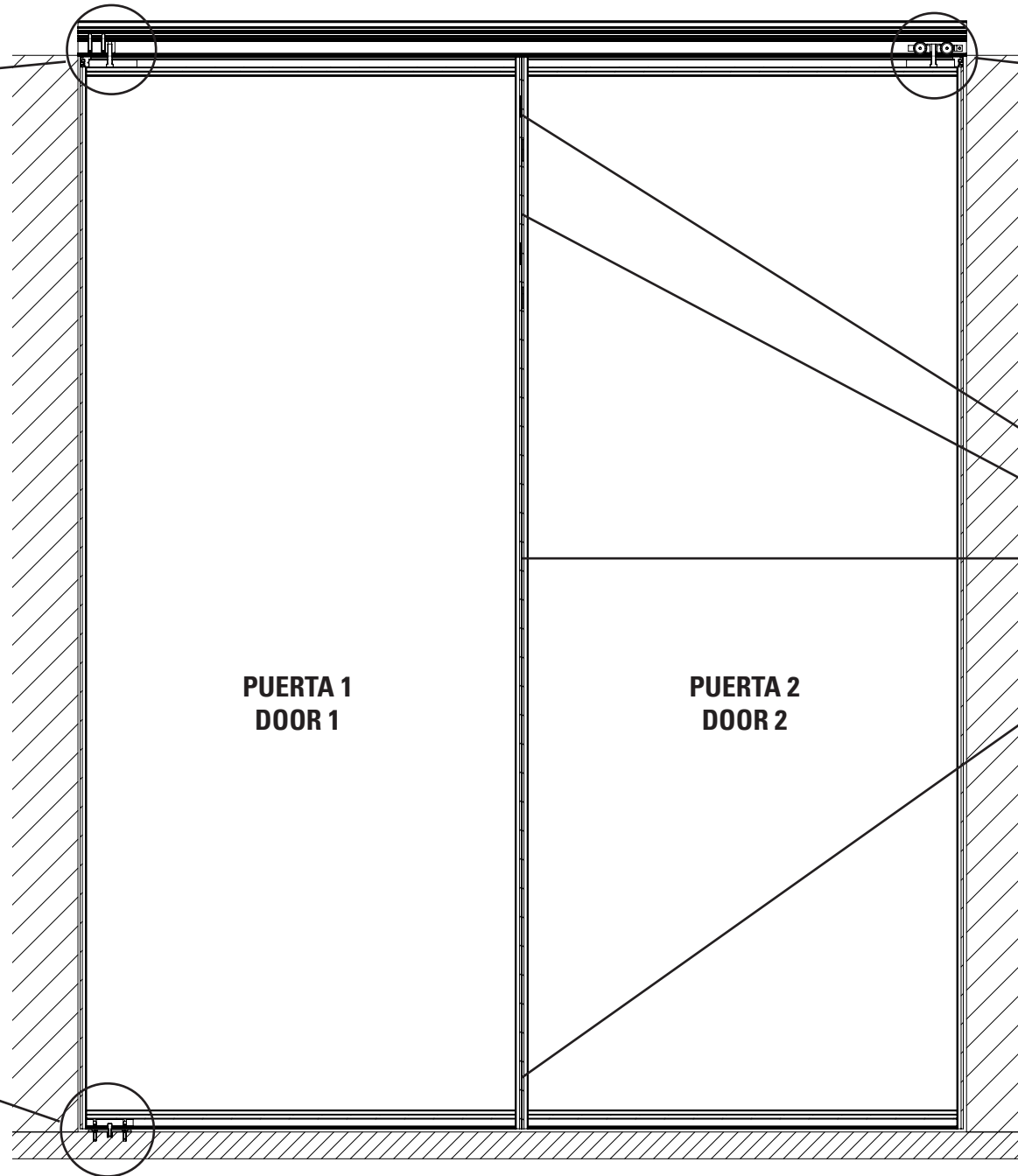
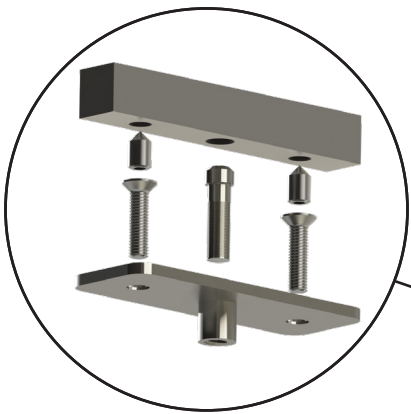
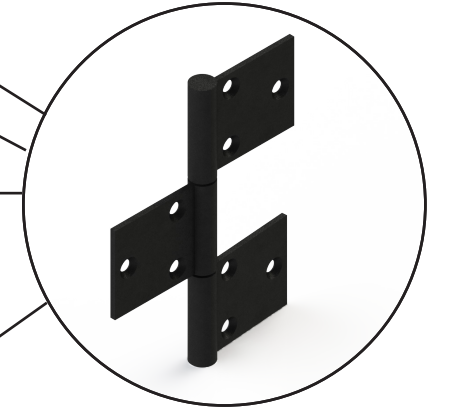
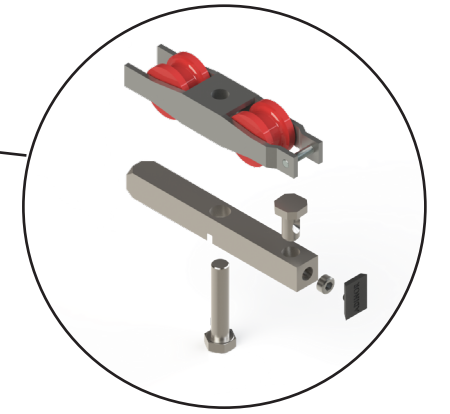
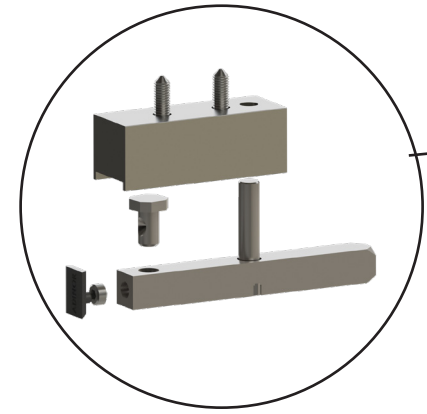
**A = Ancho de luz (distancia entre paredes)/ Clearance width**

**B = Altura de luz (distancia desde la parte inferior de la guia hasta el suelo) / Clearance height**

**ALTO DE HOJA PUERTA PA: B-20mm**

**ANCHO DE HOJA PUERTA PA PARA 2 HOJAS: (A-11) / 2mm**

**ANCHO DE HOJA PUERTA PA PARA 4 HOJAS:(A-18) / 4mm**



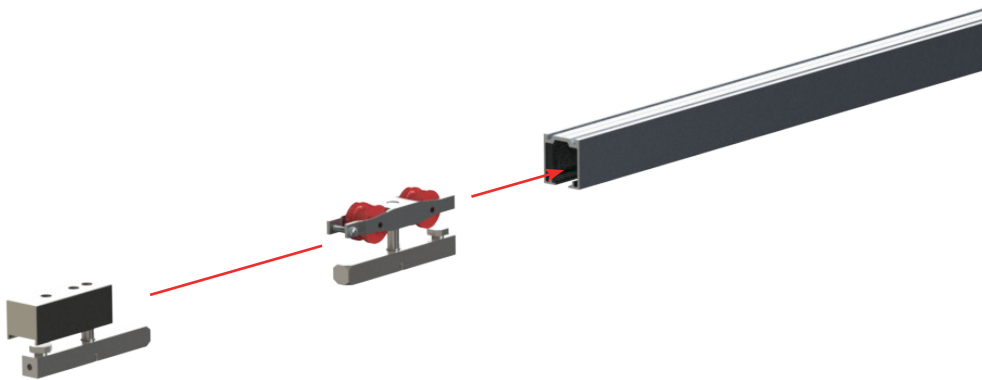
PUERTA 1  
DOOR 1

PUERTA 2  
DOOR 2

EGOTTO

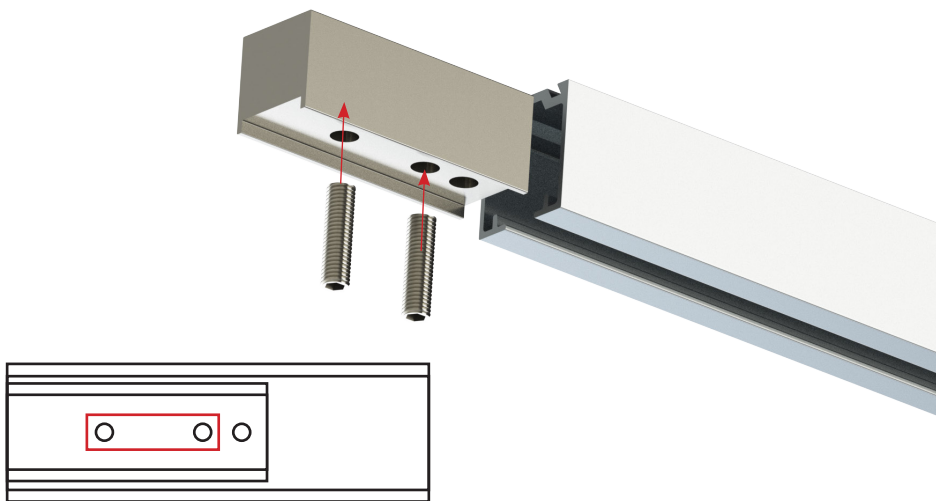
### PASO 1 METER LOS HERRAJES SUPERIORES EN LA GUIA SUPERIOR CORREDERA

### STEP 1 INTRODUCE UPPER HARDWARE INTO THE SLIDING ALUMINIUM PROFILE



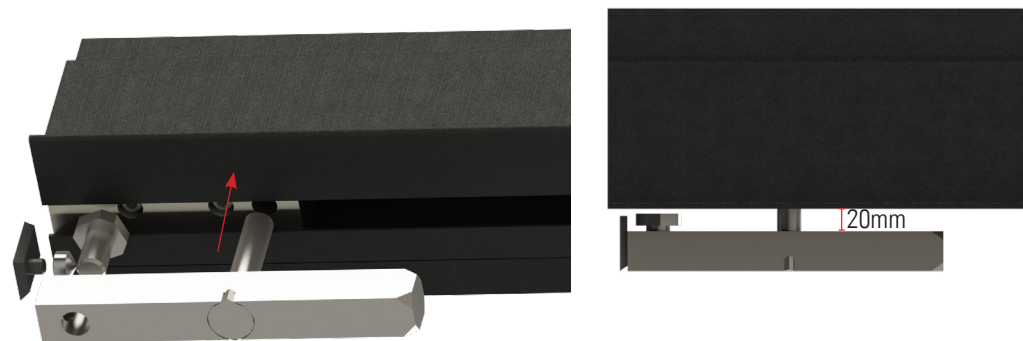
### PASO 2 FIJAR EL HERRAJE SUPERIOR DE LA PUERTA 1 EN EL EXTREMO DE LA GUIA

### STEP 2 FIX THE FIRST DOOR'S UPPER HARDWARE TO THE SLIDING ALUMINIUM PROFILE

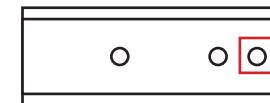


### PASO 3 FIJAR EL RETRAC EN LA ROSCA DEL HERRAJE SUPERIOR

### STEP 3 FIX RETRAC TO UPPER HARDWARE

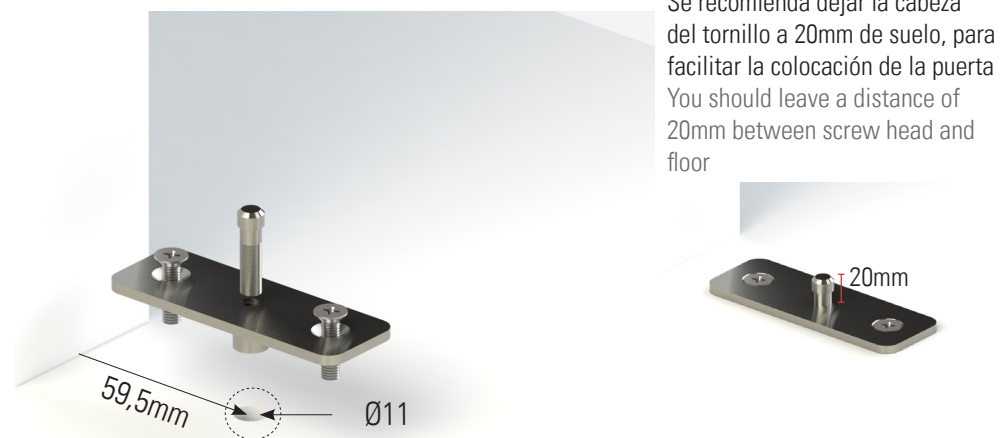


Dejar 15mm entre parte superior del retrac y parte inferior de la guia  
You should leave a distance of 15mm between upper side of retrac and sliding upper guide



### PASO 4 HACER TALADRO EN EL SUELO Y FIJAR EL PIVOTE INFERIOR

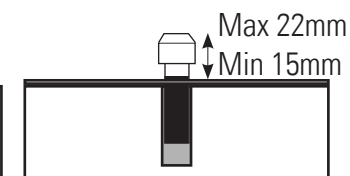
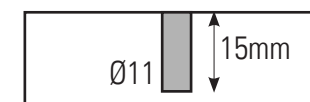
### STEP 4 SCREW THE FLOOR FOR FIX THE LOWER HARDWARE



Se recomienda dejar la cabeza del tornillo a 20mm de suelo, para facilitar la colocación de la puerta  
You should leave a distance of 20mm between screw head and floor

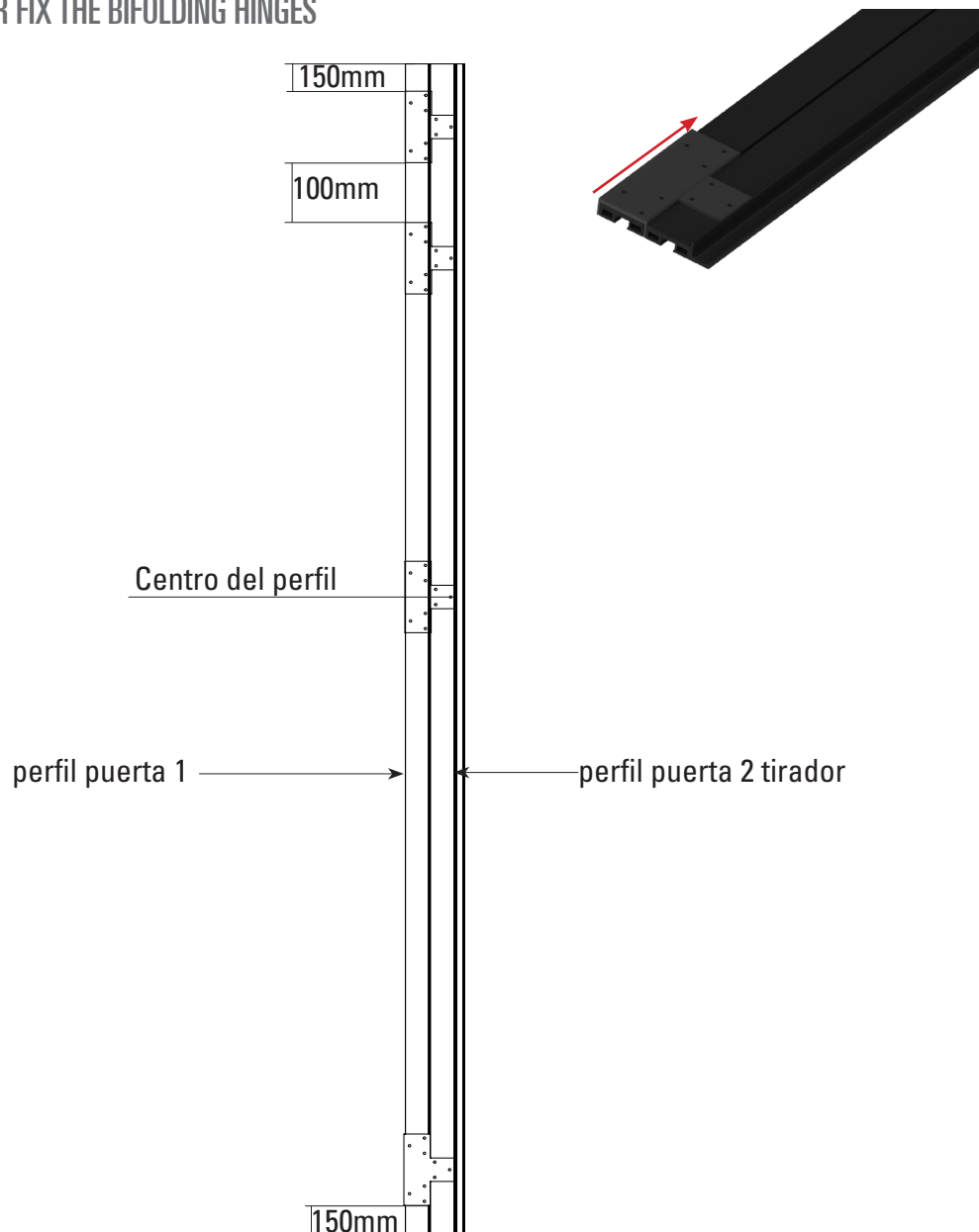
El agujero en el suelo debe estar centrado con la guia superior  
Screw must align with upper sliding guide

Profundidad de taladro:



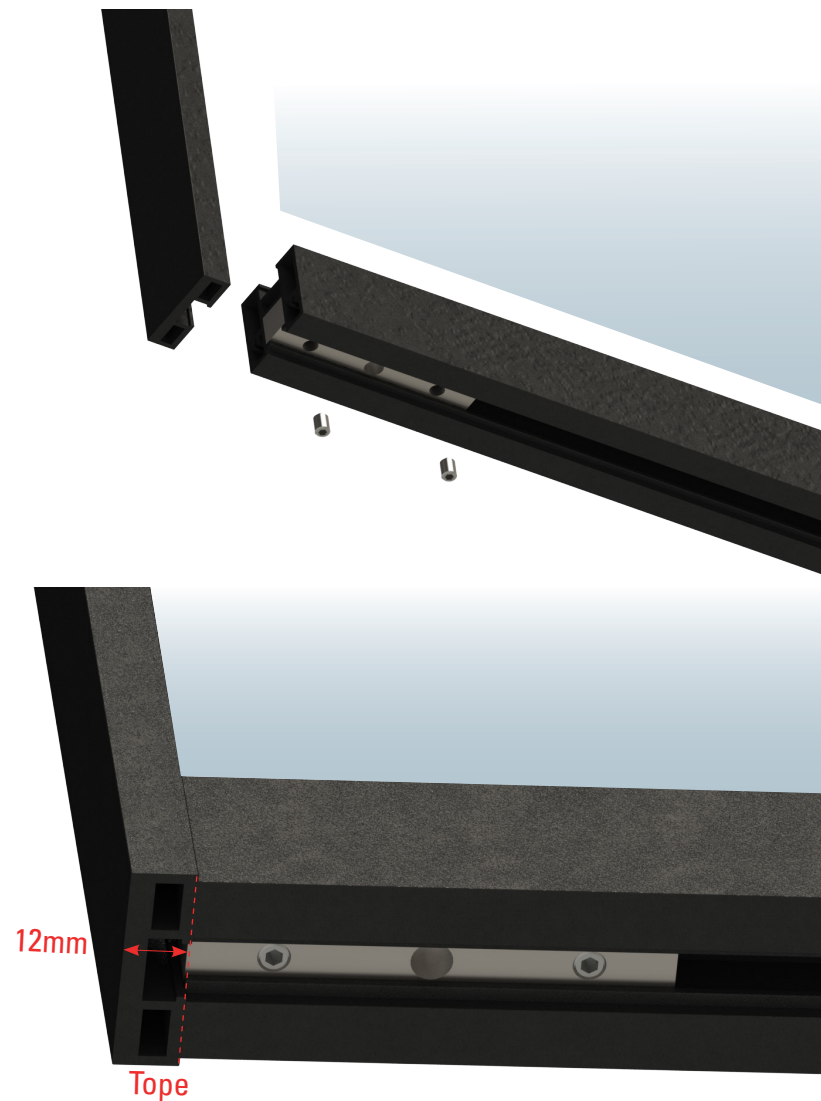
**PASO 5** MARCAR TALADRAR Y ROSCAR CON LA PLANTILLA FACILITADA LOS VERTICALES DONDE INSTALAREMOS LAS BISAGRAS.

**STEP 5** MARK AND SCREW THE VERTICAL PROFILES WITH THE PROVIDED TEMPLATE FOR FIX THE BIFOLDING HINGES



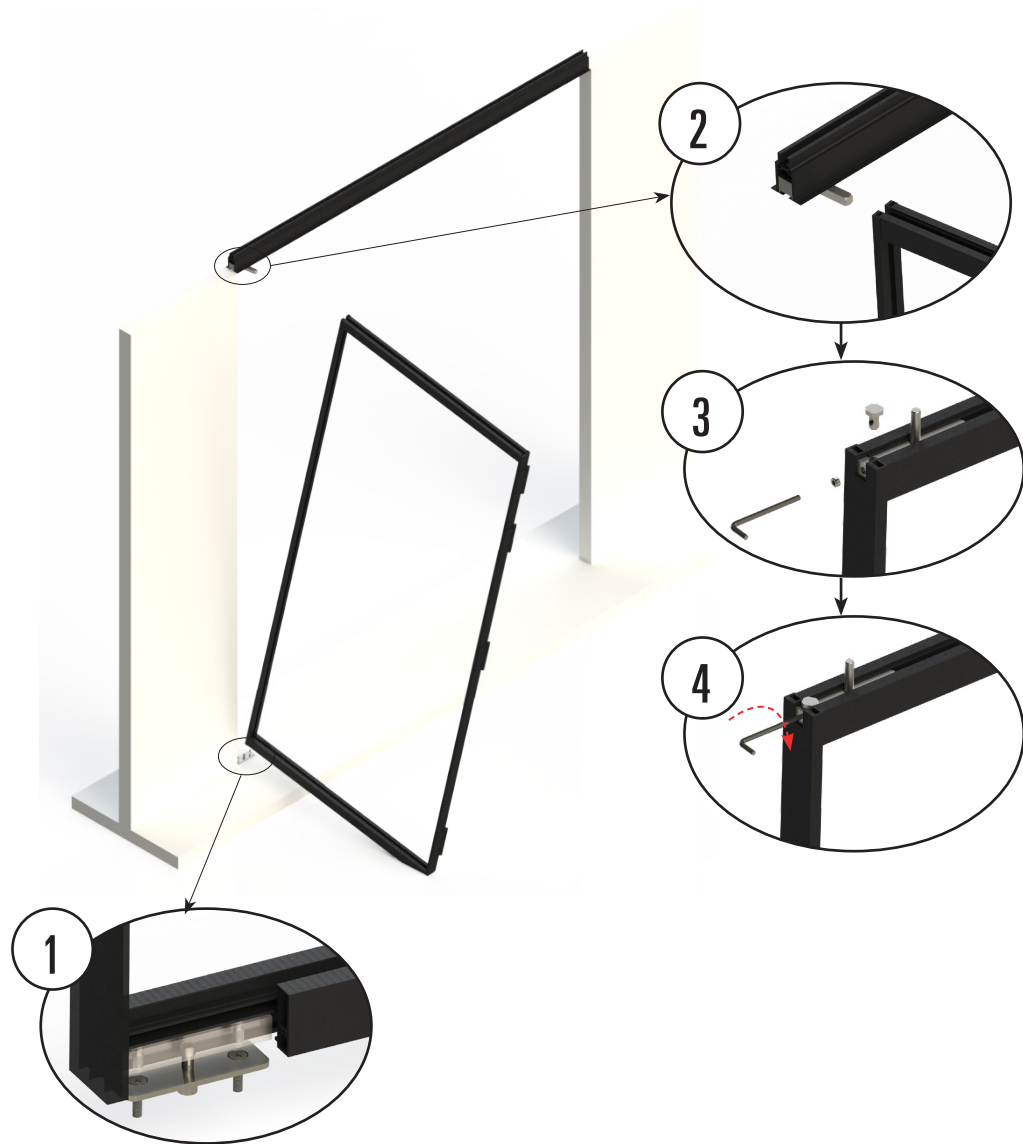
**PASO 6** ES IMPORTANTE MONTAR EL HERRAJE INFERIOR DENTRO DEL CANAL DEL PERFIL HORIZONTAL INFERIOR PA. HACER TOPE CON EL PERFIL VERTICAL.

**STEP 6** FIX THE LOWER PIVOT HARDWARE INTO THE HORIZONTAL PA SLOT, FIX IT TO THE PROFILES'S TOP BEFORE ASSEMBLY PA DOOR



**PASO 7** APOYAMOS LA PUERTA N1 SOBRE EL PIVOTE DEL SUELO. ENCAJANDOLO SOBRE LA PIEZA INTRODUCIDA EN LA PARTE INFERIOR DE LA PUERTA . VOLTEAMOS LA PUERTA HASTA ENCAJARLO CON EL RETRAC QUE ESTA EN LA GUIA. BLOQUEAMOS EL RETRAC.

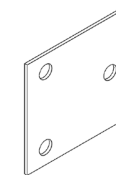
**STEP 7** PULL THE DOOR 1 UPON THE HARDWARE PIVOT FLOOR FIT IT IN THE HARDWARE THAT WAS INTRODUCED IN THE HORIZONTAL LOWER PROFILE. FLIP THE DOOR UNTIL FIT THE RETRAC THAT IS ON THE SLIDING GUIDE. BLOCK THE RETRAC



**PASO 8** PONER LOS SUPLEMENTOS Y FIJAR LAS BISAGRAS EN LA PUERTA NUMERO 1  
**STEP 8** FIX BIFOLDING HINGE IN THE VERTICAL PROFILE OF PA PIVOT DOOR

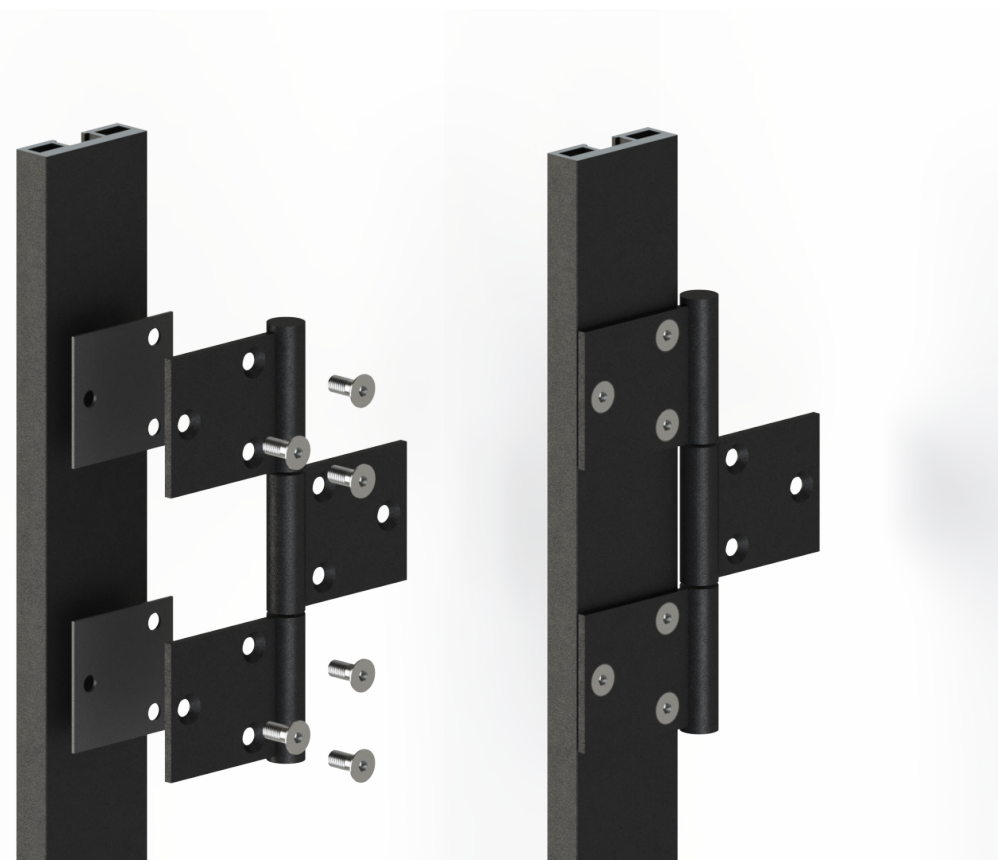
\*\* SE SUMINISTRARAN SUPLEMENTOS PARA LAS BISAGRAS

\*\* WE WILL PROVIDE SUPLEMENTS FOR BIFOLDING HINGES



x12 Uds

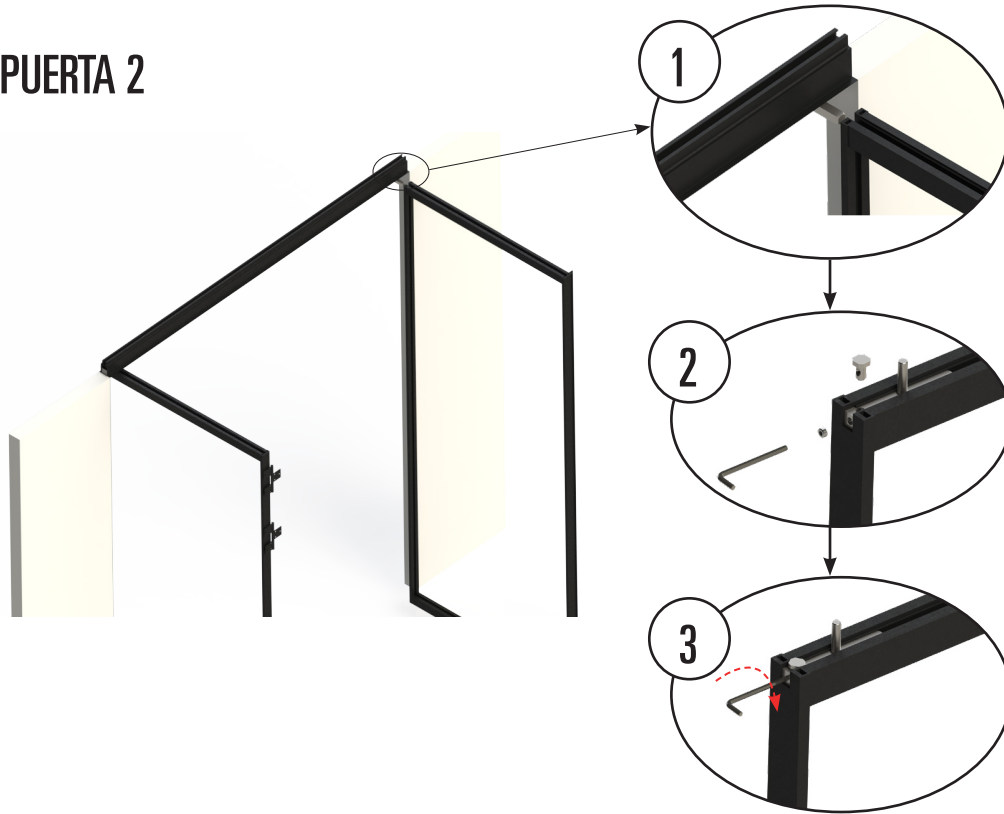
## PUERTA 1



**PASO 9** INTRODUCIR EL RETRAC EN EL CANAL DEL PERFIL HORIZONTAL SUPERIOR DE LA PUERTA PA 2. BLOQUEAR EL RETRAC.

**STEP 9** INTRODUCE RETRAC INTO THE UPPER HORIZONTAL PA PROFILE OF SECOND PA DOOR. BLOCK THE RETRAC.

**PUERTA 2**



**PASO 10** PONER LOS SUPLEMENTOS Y FIJAR LAS BISAGRAS A PUERTA 2

**STEP 10** SCREW THE SUPLEMENTS AND FIX HINGES TO DOOR 2.

**PUERTA 2**

